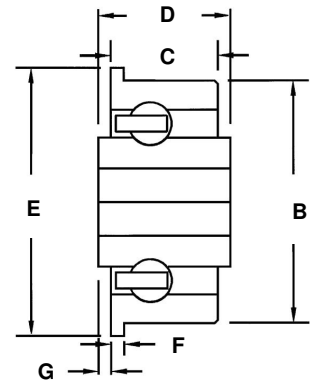
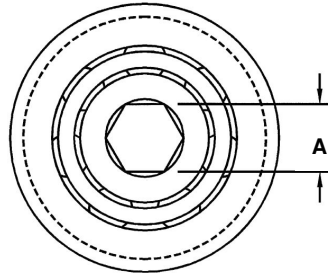
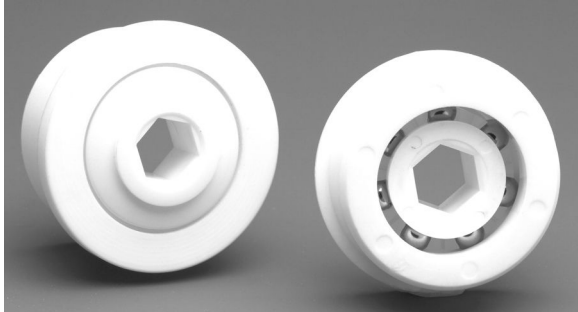


# CONVEYOR BALL BEARINGS

## Plastic Raceways Single Row - Hex Bore



### Single Row

Standard Plastic is Polypropylene

PART NUMBER	A HEX	B	C	D	E	F	G	MAXIMUM RPM WITH NO LOAD	DYNAMIC LOAD CAPACITY	STATIC LOAD CAPACITY
CB312-1.0SR-6	5/16 in	1.0 in	.84 in	.47 in	1.16 in	.12 in	.12 in	1600	42 lbs	33 lbs
CB437-1.5SR-6	7/16 in	1.50 in	.70 in	.93 or .60 in	1.56 in	.10 in	.12 in	1069	69 lbs	46 lbs
CB437-1.6SR-6	7/16 in	1.60 in	.70 or 1.10 in	.60 in	1.80 in	.10 in	.12 in	1069	69 lbs	46 lbs
CB437-1.78SR-6	7/16 in	1.78 in	1.10 in	.60 in	1.86 in	.10 in	.12 in	1069	69 lbs	46 lbs
CB437-1.87SR-6	7/16 in	1.87 in	.70 in	.60 in	2.00 in	.10 in	.12 in	1069	69 lbs	46 lbs
CB437-2.05SR-6	7/16 in	2.056 in	.70 in	.60 in	2.32 in	.10 in	.12 in	729	92 lbs	61 lbs
CB687-2.05SR-6	11/16 in	2.056 in	.70 in	.60 in	2.32 in	.10 in	.12 in	729	92 lbs	61 lbs
CB437-2.26SR-6	7/16 in	2.260 in	.70 in	.60 in	2.37 in	.10 in	.12 in	729	92 lbs	61 lbs
CB687-2.26SR-6	11/16 in	2.260 in	.70 in	.60 in	2.37 in	.10 in	.12 in	729	92 lbs	61 lbs

- For Delivery see Availability and Material Selection Page.
- Load & Speed calculations are for reference only. KMS recommends testing in actual environment to be encountered.
- Information presented is believed to be accurate at the time of publication but is subject to change without notice.

### VARIATIONS & CUSTOM SIZES MADE EASILY FOR LOW AND HIGH QUANTITIES

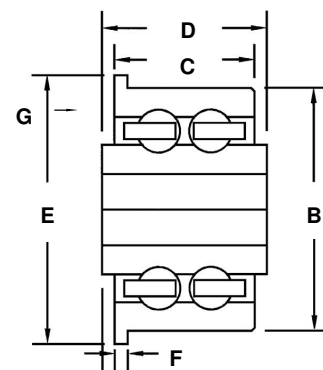
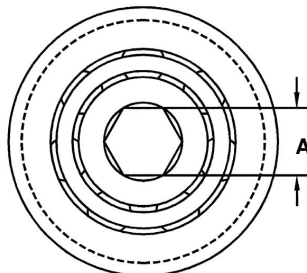
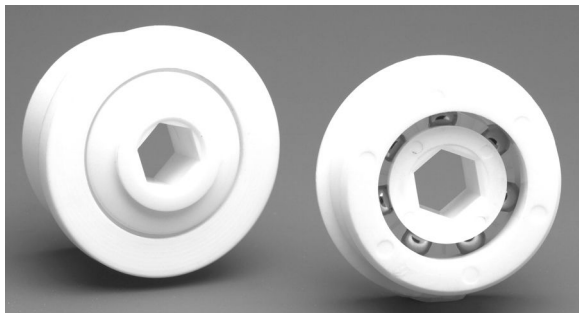
Corrosion Resistant • Lube Free • Hygienic • Non-Metallic • Non-Magnetic • Light Weight • Design Flexibility



KMS Bearings, Inc. • 1560 Harmony Circle, Anaheim, CA 92807 • (714) 970-0280 • FAX (714) 970-0560  
Toll Free (800) 448-2412 • [www.KMSBearings.com](http://www.KMSBearings.com)

# CONVEYOR BALL BEARINGS

## Plastic Raceways Double Row - Hex Bore



### Double Row

Standard Plastic is Polypropylene

PART NUMBER	A HEX	B	C	D	E	F	G	MAXIMUM RPM WITH NO LOAD	DYNAMIC LOAD CAPACITY	STATIC LOAD CAPACITY
CB312-1.0DR-6	5/16 in	1.0 in	.84 in	.47 in	1.16 in	.12 in	.06 in	1280	60 lbs	43 lbs
CB437-1.5DR-6	7/16 in	1.50 in	.70 in	.93 in	1.56 in	.10 in	.12 in	855	85 lbs	68 lbs
CB437-1.6DR-6	7/16 in	1.60 in	.70 or 1.10 in	.93 in	1.80 in	.10 in	.12 in	855	85 lbs	68 lbs
CB437-1.78DR-6	7/16 in	1.78 in	1.10 in	.93 in	1.86 in	.10 in	.12 in	855	85 lbs	68 lbs
CB437-1.87DR-6	7/16 in	1.87 in	.70 in	.93 in	2.00 in	.10 in	.12 in	855	85 lbs	68 lbs
CB437-2.05DR-6	7/16 in	2.056 in	.70 in	.93 in	2.32 in	.10 in	.12 in	672	100 lbs	83 lbs
CB687-2.05DR-6	11/16 in	2.056 in	.70 in	.93 in	2.32 in	.10 in	.12 in	672	100 lbs	83 lbs
CB437-2.26DR-6	7/16 in	2.260 in	.70 in	.93 in	2.37 in	.10 in	.12 in	672	100 lbs	83 lbs
CB687-2.26DR-6	11/16 in	2.260 in	.70 in	.93 in	2.37 in	.10 in	.12 in	672	100 lbs	83 lbs

- For Delivery see Availability and Material Selection Page.
- Load & Speed calculations are for reference only. KMS recommends testing in actual environment to be encountered.
- Information presented is believed to be accurate at the time of publication but is subject to change without notice.

### VARIATIONS & CUSTOM SIZES MADE EASILY FOR LOW AND HIGH QUANTITIES

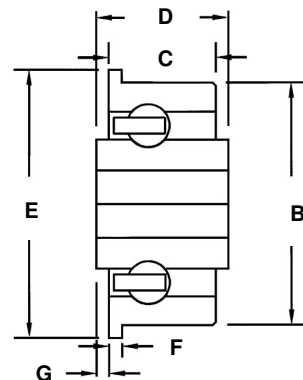
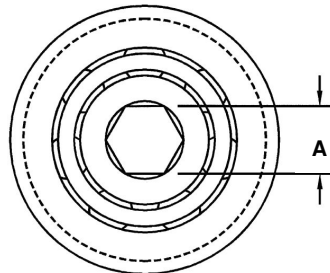
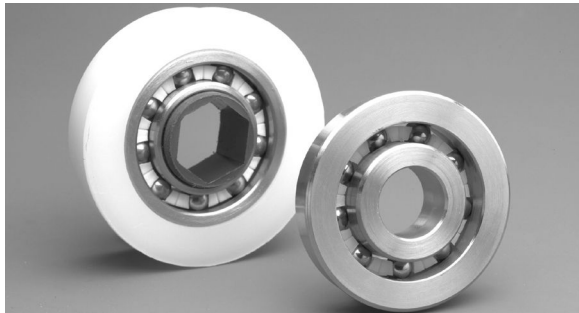
Corrosion Resistant • Lube Free • Hygienic • Non-Metallic • Non-Magnetic • Light Weight • Design Flexibility



KMS Bearings, Inc. • 1560 Harmony Circle, Anaheim, CA 92807 • (714) 970-0280 • FAX (714) 970-0560  
Toll Free (800) 448-2412 • [www.KMSBearings.com](http://www.KMSBearings.com)

# CONVEYOR BALL BEARINGS

## 316 Stainless Raceways Single Row - Hex Bore



### Single Row

Standard Plastic is Polypropylene

PART NUMBER	A HEX	B	C	D	E	F	G	MAXIMUM RPM WITH NO LOAD	DYNAMIC LOAD CAPACITY	STATIC LOAD CAPACITY
SSCB312-1.0SR-6	5/16 in	1.00 in	0.84 in	.47 in	1.16 in	.12 in	.12 in	1600	126 lbs	99 lbs
SSCB437-1.5SR-6	7/16 in	1.50 in	0.70 in	.93 or .60 in	1.56 in	.10 in	.12 in	1069	207 lbs	165 lbs
SSCB437-1.6SR-6	7/16 in	1.60 in	0.70 in	.60 in	1.80 in	.10 in	.12 in	1069	207 lbs	165 lbs
SSCB437-1.78SR-6	7/16 in	1.78 in	1.10 in	.60 in	1.86 in	.10 in	.12 in	1069	207 lbs	165 lbs
SSCB437-1.87SR-6	7/16 in	1.87 in	0.70 in	.60 in	2.00 in	.10 in	.12 in	1069	207 lbs	165 lbs
SSCB437-2.05SR-6	7/16 in	2.056 in	0.70 in	.60 in	2.32 in	.10 in	.12 in	840	234 lbs	198 lbs
SSCB687-2.05SR-6	11/16 in	2.056 in	0.70 in	.60 in	2.32 in	.10 in	.12 in	840	234 lbs	198 lbs
SSCB437-2.26SR-6	7/16 in	2.260 in	0.70 in	.60 in	2.37 in	.10 in	.12 in	840	234 lbs	198 lbs
SSCB687-2.26SR-6	11/16 in	2.260 in	0.70 in	.60 in	2.37 in	.10 in	.12 in	840	234 lbs	198 lbs

- For Delivery see Availability and Material Selection page.
- For Tube and Pipe fit see Availability and Material Selection page.
- Load & Speed calculations are for reference only. KMS recommends testing in actual environment to be encountered.
- Information presented is believed to be accurate at the time of publication but is subject to change without notice.

### VARIATIONS & CUSTOM SIZES MADE EASILY FOR LOW AND HIGH QUANTITIES

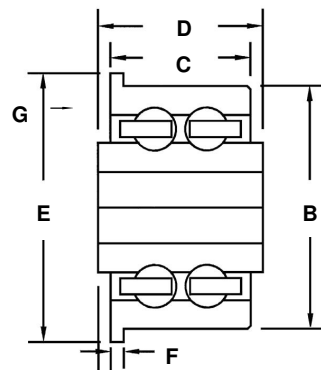
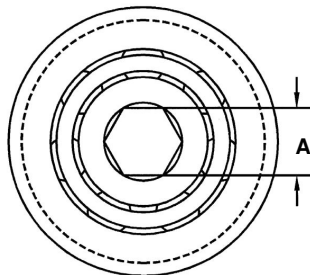
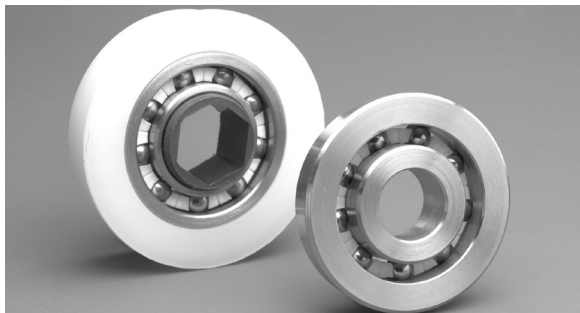
Corrosion Resistant • Lube Free • Hygienic • Non-Metallic • Non-Magnetic • Light Weight • Design Flexibility



KMS Bearings, Inc. • 1560 Harmony Circle, Anaheim, CA 92807 • (714) 970-0280 • FAX (714) 970-0560  
Toll Free (800) 448-2412 • [www.KMSBearings.com](http://www.KMSBearings.com)

# CONVEYOR BALL BEARINGS

## 316 Stainless Raceways Double Row - Hex Bore



### Double Row

Standard Plastic is Polypropylene

PART NUMBER	A HEX	B	C	D	E	F	G	MAXIMUM RPM WITH NO LOAD	DYNAMIC LOAD CAPACITY	STATIC LOAD CAPACITY
SSCB312-1.0DR-6	5/16 in	1.00 in	0.84 in	.47 in	1.16 in	.12 in	.12 in	1280	189 lbs	148 lbs
SSCB437-1.5DR-6	7/16 in	1.50 in	0.70 in	.93 or .60 in	1.56 in	.10 in	.12 in	855	310 lbs	247 lbs
SSCB437-1.6DR-6	7/16 in	1.60 in	0.70 in	.60 in	1.80 in	.10 in	.12 in	855	310 lbs	247 lbs
SSCB437-1.78DR-6	7/16 in	1.78 in	1.10 in	.60 in	1.86 in	.10 in	.12 in	855	310 lbs	247 lbs
SSCB437-1.87DR-6	7/16 in	1.87 in	0.70 in	.60 in	2.00 in	.10 in	.12 in	855	310 lbs	247 lbs
SSCB437-2.05DR-6	7/16 in	2.056 in	0.70 in	.60 in	2.32 in	.10 in	.12 in	672	351 lbs	298 lbs
SSCB687-2.05DR-6	11/16 in	2.056 in	0.70 in	.60 in	2.32 in	.10 in	.12 in	672	351 lbs	298 lbs
SSCB437-2.26DR-6	7/16 in	2.260 in	0.70 in	.60 in	2.37 in	.10 in	.12 in	672	351 lbs	298 lbs
SSCB687-2.26DR-6	11/16 in	2.260 in	0.70 in	.60 in	2.37 in	.10 in	.12 in	672	351 lbs	298 lbs

- For Delivery see Availability and Material Selection page.
- For Tube and Pipe fit see Availability and Material Selection page.
- Load & Speed calculations are for reference only. KMS recommends testing in actual environment to be encountered.
- Information presented is believed to be accurate at the time of publication but is subject to change without notice.

### VARIATIONS & CUSTOM SIZES MADE EASILY FOR LOW AND HIGH QUANTITIES

Corrosion Resistant • Lube Free • Hygienic • Non-Metallic • Non-Magnetic • Light Weight • Design Flexibility



KMS Bearings, Inc. • 1560 Harmony Circle, Anaheim, CA 92807 • (714) 970-0280 • FAX (714) 970-0560  
Toll Free (800) 448-2412 • [www.KMSBearings.com](http://www.KMSBearings.com)

# CONVEYOR BALL BEARINGS

## Plastic & 316 Stainless Raceways - Single & Double Row Availability and Material Selection

### General Information

KMS produces Conveyor type ball bearings that can be used in standard industrial tube and pipe sizes for use in conveyor systems.

#### Reasons for use are:

- |  |   |
|--|---|
| <ul style="list-style-type: none"><li>• Corrosion Resistance</li><li>• Free turning</li><li>• No-Lube</li><li>• Light weight</li></ul> | <ul style="list-style-type: none"><li>• Low start up torque - means lower conveyor incline angles</li><li>• Hygienic</li><li>• Can run in liquids</li><li>• Quiet running</li></ul> |
|--|---|

### Availability

Some bearings listed on data sheets may not be in inventory. Some may require a minimum order, and delivery could range from 3 to 6 weeks.

### How to order/specify.

Call or fax KMS to check availability on a specific size or material.

### Material Selection

The majority of KMS Conveyor ball bearings are produced with either polypropylene or 316 stainless races. They are cage type and are fitted with 316 Stainless balls. Polypropylene is a general purpose conventional plastic widely used for components in wet and hostile environments, while conforming to FDA, NSF, and UL Standards. AISI 316 stainless is used extensively in the food and medical industries.

Alternate materials are available. Consult with KMS for availability.

### Guide for choosing bearing size to tube/pipe.

TUBE SIZE AND DESCRIPTION	BEARING SELECTIONS
1" PVC, 1" ID x 1.315 O.D., 1" PVC, sch. 40.	CB312-1.0 in Single Row (SR) Double row (DR), Plastic or 316 Stainless races.
1-1/2 Schedule 80 PVC (.200 wall thickness)	CB437-1.5
1-1/2 Schedule 40 PVC (.150 wall thickness) 1.9 Steel, 9 gauge (9 gauge = .148 wall)	CB437 - 1.6
2.0 Steel 12 gauge(12 gauge = .109 wall)	CB437-1.78
2.0 Steel (16 gauge = .065 wall thickness)	CB437-1.87
2.0 PVC, Schedule 40 (.150 wall thickness) 2 1/2 Steel, 11 gauge (.120 wall thickness)	CB437 or 687 - 2.05 CB4376 or 687 - 2.26

This bearing and tube guide is intended to be a practical guide for selection. Consult with tube/pipe manufacturer for actual dimensions held in production lots.

### VARIATIONS & CUSTOM SIZES MADE EASILY FOR LOW AND HIGH QUANTITIES

Corrosion Resistant • Lube Free • Hygienic • Non-Metallic • Non-Magnetic • Light Weight • Design Flexibility



KMS Bearings, Inc. • 1560 Harmony Circle, Anaheim, CA 92807 • (714) 970-0280 • FAX (714) 970-0560  
Toll Free (800) 448-2412 • [www.KMSBearings.com](http://www.KMSBearings.com)