

Rotek's fully-integrated facilities provide complete manufacturing, scheduling and quality control.



Modern facilities and efficient practices provide value to you.

With fully integrated manufacturing capabilities, including ring rolling mills, complete in-house heat treating, full machining facilities, and CNC/CAD/CAM technologies, Rotek is able to produce, machine and assemble our products with complete control over quality and scheduling.

And we've complemented our production expertise with a variety of customer-oriented business philosophies and techniques. Our Total Quality Management program and continuous improvement policy have earned certification to ISO 9001 and ISO 9002 standards.

Rotek also offers worldwide support.

And, as an affiliate of Rothe Erde, Rotek is part of a network of affiliated manufacturing companies located around the world. This network is ready to assist you - or your customer - wherever you may need us.

Captions (Clockwise from upper left)

Rotek produces its own seamless rolled rings for slewing ring production.

In-house heat treating facilities provide complete normalizing, annealing, and tempering operations.

Raceways are deep-hardened with in-house induction heating equipment.

Modern machining centers are employed at two Rotek manufacturing plants. Rotek's manufacturing complex recently doubled in size to over 230,000 square feet.

For more information contact:



Rotek Incorporated
 1400 South Chillicothe Road
 Aurora, OH 44202
 Telephone: 800-221-8043
 Fax (Sales): 330-562-4620
 Fax (Engineering): 330-562-7394
 Visit our website at www.rotek-inc.com

© 2010, Rotek Incorporated. Printed in U.S.A. (1m)

Rotek® Slewing Rings and Rolled Rings for Wind Turbine Applications

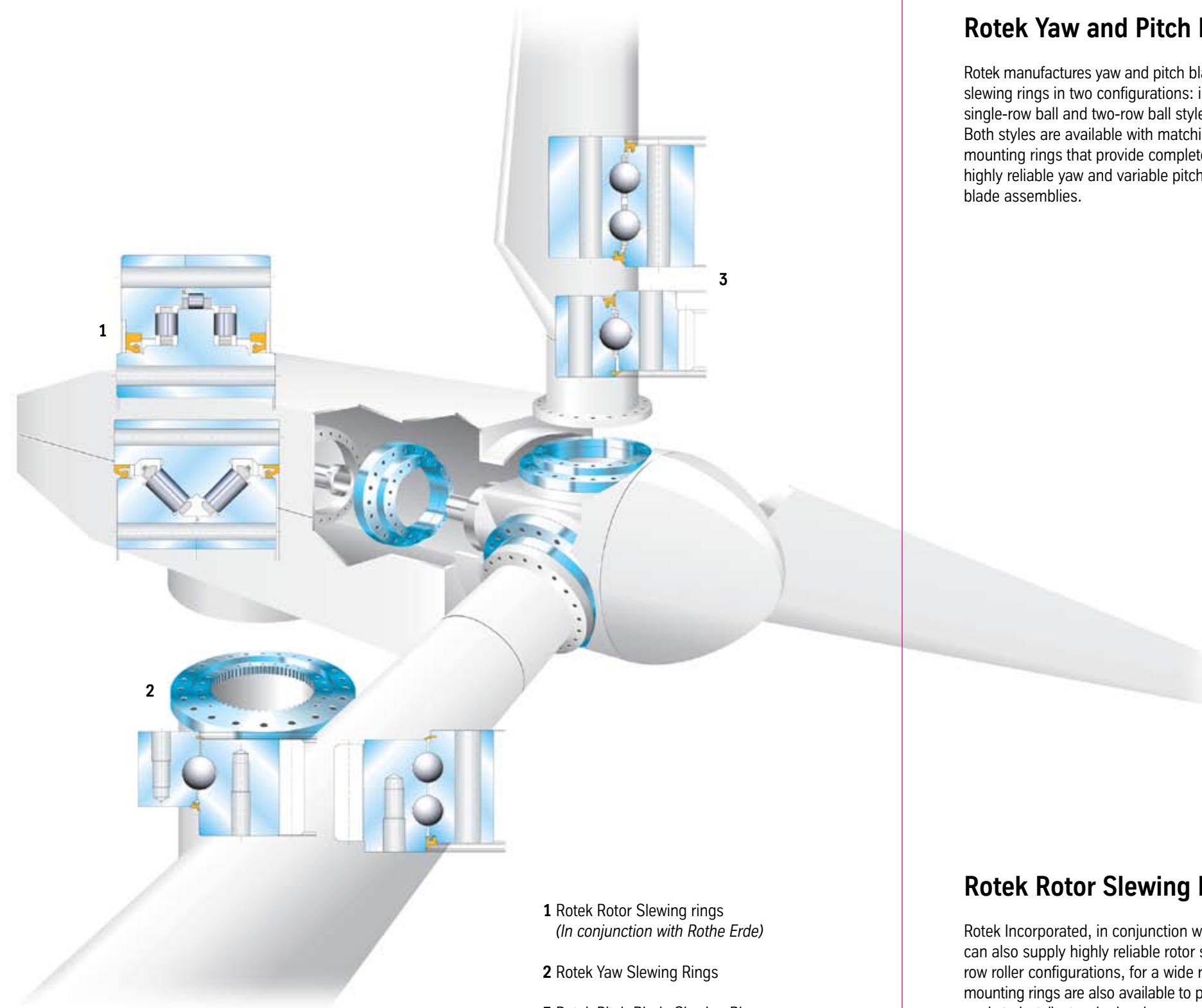


Rotek Incorporated



ThyssenKrupp

Turn to Rotek Incorporated for Critical Wind Turbine Slewing Rings.



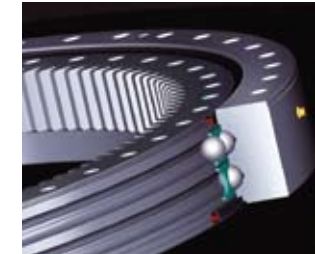
1 Rotek Rotor Slewing rings
(In conjunction with Rothe Erde)

2 Rotek Yaw Slewing Rings

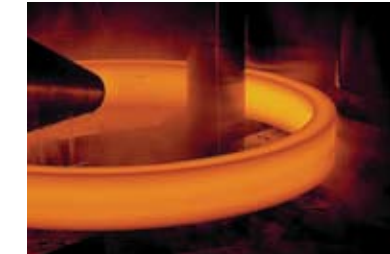
3 Rotek Pitch Blade Slewing Rings

Rotek Yaw and Pitch Blade Slewing Rings

Rotek manufactures yaw and pitch blade slewing rings in two configurations: in single-row ball and two-row ball styles. Both styles are available with matching mounting rings that provide complete, highly reliable yaw and variable pitch blade assemblies.



And for gear blanks, too!



Seamless rolled rings engineered for your application.

Rotek engineered seamless rolled rings are available in a wide range of aluminum grades and carbon, stainless and alloy steels. All are certified; all are traceable. And, with our in-house heat treating facilities and extensive machining capabilities, Rotek can provide seamless rolled rings at any stage from "as rolled" to "ready-to-install".

Here are the specifications for Rotek seamless rolled rings:

	U.S	Metric
Ring Weight		
Minimum	180 lbs.	80 kg
Maximum	35,000 lbs.	16,000 kg
Outer Diameter, OD		
Minimum	12 in.	300 mm
Maximum	240 in.	6,100 mm
Ring Height		
Minimum	2 in.	50 mm
Maximum	43 in.	1,100 mm

Rotek Rotor Slewing Rings

Rotek Incorporated, in conjunction with its parent company, Rothe Erde, can also supply highly reliable rotor slewing rings, in two-row or three-row roller configurations, for a wide range of wind turbine sizes. Matching mounting rings are also available to provide the wind turbine builder with a ready-to-install rotor slewing ring assembly.