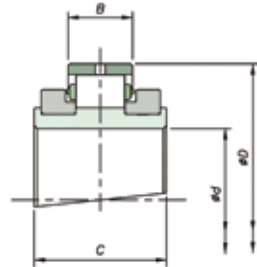
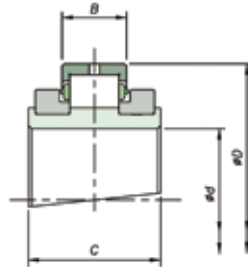


# Medium Series Bearing & Housing

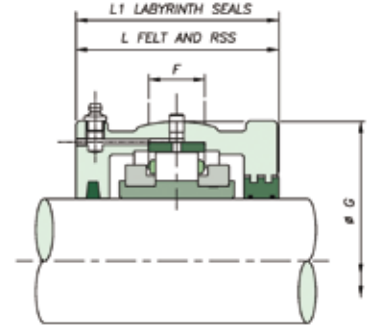
## 50mm to 150mm



Expansion BX



Retained BR



Shaft (d)		Reference	Bearings Ratings						
mm	inch	Add BR for retained Add BX for expansion e.g. MSM55BR	Dynamic C <sub>r</sub> (kN/lb)	Static C <sub>0r</sub> (kN/lb)	Axial C <sub>a</sub> (kN/lb)	Max RPM	D	B	C

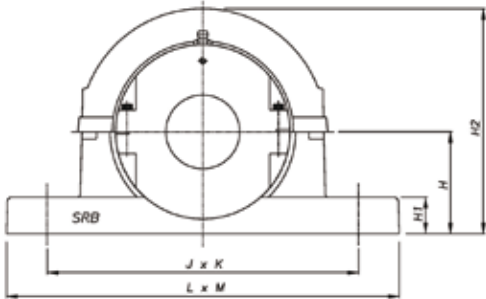
45	1 <sup>11</sup> / <sub>16</sub> 1 <sup>3</sup> / <sub>4</sub>	MSM45	MSE111 MSE112	121	127	6.20	4350	107.95	35.00	67.50
50	1 <sup>15</sup> / <sub>16</sub> 2	MSM50	MSE115 MSE200	27202	28551	1394	4350	4.250	1.378	2.657
55	2 <sup>3</sup> / <sub>16</sub>	MSM55	MSE203	168	190	8.80	3680	127.00	38.90	72.30
60	2 <sup>1</sup> / <sub>4</sub>	MSM60	MSE204	37768	42714	1978	3680	5.000	1.531	2.846
65	2 <sup>7</sup> / <sub>16</sub>	MSM65	MSE207 MSE208							
70	2 <sup>11</sup> / <sub>16</sub>	MSM70	MSE211	258	300	10.60	3080	149.22	46.10	82.60
75	2 <sup>3</sup> / <sub>4</sub> 2 <sup>15</sup> / <sub>16</sub> 3	MSM75	MSE212 MSE215 MSE300	58001	67443	2383	3080	5.875	1.815	3.252
80	3 <sup>3</sup> / <sub>16</sub>	MSM80	MSE303	297	353	17.80	2520	169.86	48.40	89.70
85	3 <sup>1</sup> / <sub>4</sub>	MSM85	MSE304	66768	79358	4002	2520	6.687	1.906	3.531
90	3 <sup>7</sup> / <sub>16</sub> 3 <sup>1</sup> / <sub>2</sub>	MSM90	MSE307 MSE308							
100	3 <sup>11</sup> / <sub>16</sub>	MSM100	MSE311	388	491	25.00	2130	193.68	51.60	92.10
105	3 <sup>3</sup> / <sub>4</sub> 3 <sup>15</sup> / <sub>16</sub> 4	MSM105	MSE312 MSE315 MSE400	87226	110381	5620	2130	7.625	2.031	3.626
110	4 <sup>3</sup> / <sub>16</sub>	MSM110	MSE403	454	592	31.20	1820	228.60	57.20	100.00
115	4 <sup>1</sup> / <sub>4</sub> 4 <sup>7</sup> / <sub>16</sub> 4 <sup>1</sup> / <sub>2</sub>	MSM115	MSE404 MSE407 MSE408	102063	133087	7014	1820	9.000	2.252	3.937
120	4 <sup>11</sup> / <sub>16</sub>	MSM120	MSE411	525	700	38.20	1600	254.00	63.50	114.30
125	4 <sup>3</sup> / <sub>4</sub>	MSM125	MSE412	118025	157366	8588	1600	10.000	2.500	4.500
130	4 <sup>15</sup> / <sub>16</sub> 5	MSM130	MSE415 MSE500							
135	5 <sup>3</sup> / <sub>16</sub>	MSM135	MSE503	600	817	45.40	1450	273.05	66.70	117.50
140	5 <sup>1</sup> / <sub>4</sub> 5 <sup>7</sup> / <sub>16</sub> 5 <sup>1</sup> / <sub>2</sub>	MSM140	MSE504 MSE507 MSE508	134885	183669	10206	1450	10.750	2.626	4.626
150	5 <sup>5</sup> / <sub>16</sub>	MSM150	MSE511	730	1034	52.40	1320	292.10	68.30	123.80
155	5 <sup>3</sup> / <sub>4</sub>	MSM155	MSE512	164111	232453	11780	1320	11.500	2.689	4.874
160A	5 <sup>15</sup> / <sub>16</sub> 6	MSM160A	MSE515 MSE600							

Housing Reference				
Add HR for retained Add HX for expansion e.g. MSM55HR	G	F	L	L <sub>1</sub>

MSM45	MSE111 MSE112	134.94	32	112	114
MSM50	MSE115 MSE200	5.313	1.3	4.4	4.5
MSM55	MSE203				
MSM60	MSE204	157.16	38	124	126
MSM65	MSE207 MSE208	6.187	1.5	4.9	5.0
MSM70	MSE211				
MSM75	MSE212 MSE215 MSE300	177.80	50	138	140
MSM80	MSE303				
MSM85	MSE304	203.20	50	152	154
MSM90	MSE307 MSE308	8.000	2.0	6.0	6.1
MSM100	MSE311				
MSM105	MSE312 MSE315 MSE400	231.78	64	144	146
MSM110	MSE403				
MSM115	MSE404 MSE407 MSE408	266.70	76	160	162
MSM120	MSE411				
MSM125	MSE412	295.28	82	182	184
MSM130	MSE415 MSE500	11.625	3.2	7.2	7.2
MSM135	MSE503				
MSM140	MSE504 MSE507 MSE508	323.85	90	186	188
MSM150	MSE511				
MSM155	MSE512	336.55	95	202	204
MSM160A	MSE515 MSE600	13.250	3.7	8.0	8.0

## Medium Series Support

### S03 - S31



#### S03 - S31

Shaft (d)		Support Reference	H	H <sub>1</sub>	H <sub>2</sub>	J x K	L x M	Bolts
mm	inch							
45	1 <sup>11</sup> / <sub>16</sub>	S03	80	32	180	234	280 x 70	2 x M16
50	1 <sup>3</sup> / <sub>4</sub>		3.150	1.3	7.1	9.2	11 x 2.8	
	2							
55	2 <sup>3</sup> / <sub>16</sub>	S04	95	38	208	270	330 x 76	2 x M20
60	2 <sup>1</sup> / <sub>4</sub>		3.740	1.5	8.2	10.6	13 x 3	
65	2 <sup>7</sup> / <sub>16</sub>							
70	2 <sup>11</sup> / <sub>16</sub>	S05	112	44	252	320	380 x 90	2 x M24
75	2 <sup>3</sup> / <sub>4</sub>		4.409	1.7	9.9	12.6	15 x 3.5	
	3							
80	3 <sup>3</sup> / <sub>16</sub>	S06	125	52	272	354	420 x 102	2 x M24
85	3 <sup>1</sup> / <sub>4</sub>		4.921	2.0	10.7	13.9	16.5 x 4	
90	3 <sup>7</sup> / <sub>16</sub>							
	3 <sup>1</sup> / <sub>2</sub>							
100	3 <sup>11</sup> / <sub>16</sub>	S07	143	60	314	392	466 x 120	2 x M24
105	3 <sup>3</sup> / <sub>4</sub>		5.630	2.4	12.4	15.4	18.3 x 4.7	
	4							
110	4 <sup>3</sup> / <sub>16</sub>	S08	162	38	372	450 x 120	508 x 178	4 x M24
115	4 <sup>1</sup> / <sub>4</sub>		6.378	1.5	14.6	17.7 x 4.7	20 x 7	
	4 <sup>7</sup> / <sub>16</sub>							
	4 <sup>1</sup> / <sub>2</sub>							
120	4 <sup>11</sup> / <sub>16</sub>	S10	181	40	415	496 x 120	558 x 178	4 x M24
125	4 <sup>3</sup> / <sub>4</sub>		7.126	1.6	16.3	19.5 x 4.7	22 x 7	
130	4 <sup>15</sup> / <sub>16</sub>							
	5							
135	5 <sup>3</sup> / <sub>16</sub>	S30	203	50	460	546 x 120	610 x 178	4 x M24
140	5 <sup>1</sup> / <sub>4</sub>		7.992	2.0	18.1	21.5 x 4.7	24 x 7	
	5 <sup>7</sup> / <sub>16</sub>							
	5 <sup>1</sup> / <sub>2</sub>							
150	5 <sup>11</sup> / <sub>16</sub>	S31	210	50	470	558 x 128	636 x 204	4 x M24
155	5 <sup>3</sup> / <sub>4</sub>		8.268	2.0	18.5	22 x 5	25 x 8	
160A	5 <sup>15</sup> / <sub>16</sub>							
	6							