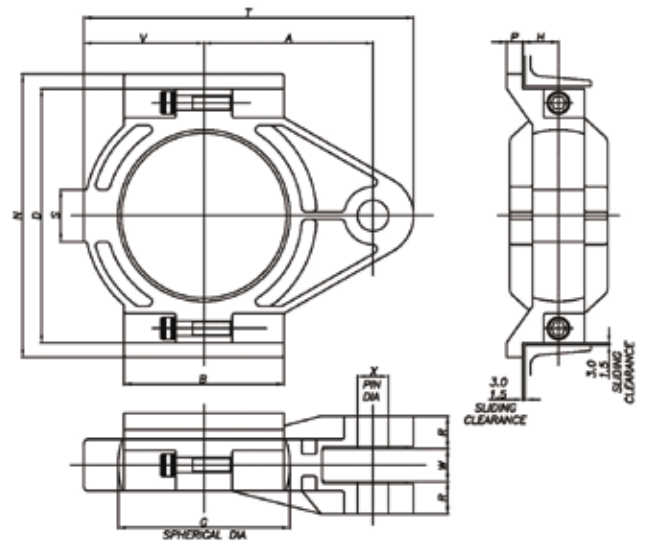
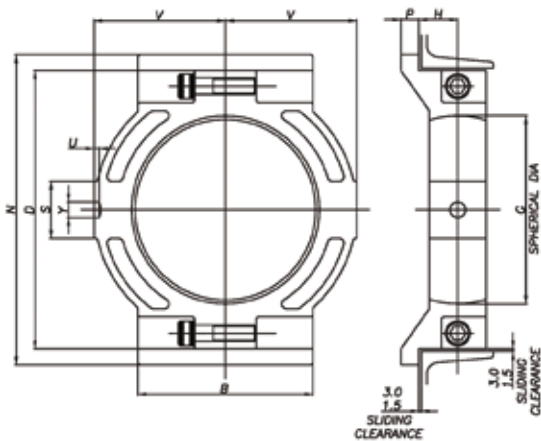


Tensioning Units

This type of split unit can be found in use on materials handling equipment in many industries. Take up units provide an efficient and readily accessible means of tensioning conveyor systems and large scale drives.

The units consist of either push type or pull type sliding supports into which standard housings and bearings may be mounted. When integrating tensioning units into new applications, it should be noted that a maximum radial load equivalent to $0.3C_r$ is permissible. As with all SRB Units, a wide variety of sealing solutions may be applied dependant on the environment and application. Please contact SRB Technical Services for assistance.



Tensioning Units TT/TP

Light Series 40mm to 150mm

Shaft (d)		Support Reference															
mm	inch	Tension Type	Push Type	B	N	D	V	P	H	L	S	A	T	X	W	R	
35	1 ³ / ₁₆	TT01	TP01	102	172	153	76	14	29	86	25	114	216	20	25	24	
40	1 ⁷ / ₁₆			4.0	6.8	6.0	3.0	0.6	1.1	3.4	1.0	4.5	8.5	0.8	1.0	0.9	
	1 ¹ / ₂																
45	1 ¹¹ / ₁₆	TT02	TP02	114	204	178	88	16	29	98	29	128	242	24	25	25	
50	1 ³ / ₄			4.5	8.0	7.0	3.5	0.6	1.1	3.9	1.1	5.0	9.5	0.9	1.0	1.0	
	1 ⁵ / ₁₆																
55	2 ¹ / ₁₆	TT03	TP03	128	235	203	102	20	32	104	38	146	280	24	30	29	
60	2 ¹ / ₄			5.0	9.3	8.0	4.0	0.8	1.3	4.1	1.5	5.7	11.0	0.9	1.2	1.1	
65	2 ⁷ / ₁₆																
70	2 ¹¹ / ₁₆	TT04	TP04	152	266	229	114	22	40	114	41	158	305	24	30	114	
75	2 ³ / ₄			6.0	10.5	9.0	4.5	0.9	1.6	4.5	1.6	6.2	12.0	0.9	1.2	4.5	
	2 ⁵ / ₁₆																
80	3 ¹ / ₁₆	TT05	TP05	190	318	280	140	22	40	136	51	190	368	30	38	35	
85	3 ³ / ₄			7.5	12.5	11.0	5.5	0.9	1.6	5.4	2.0	7.5	14.5	1.2	1.5	1.4	
90	3 ⁷ / ₁₆																
100	3 ¹¹ / ₁₆	TT06	TP06	204	342	305	152	22	43	134	51	210	414	36	44	35	
105	3 ³ / ₄			8.0	13.5	12.0	6.0	0.9	1.7	5.3	2.0	8.3	16.3	1.4	1.7	1.4	
	3 ¹⁵ / ₁₆																
110	4 ¹ / ₁₆	TT07	TP07	216	382	343	162	22	48	142	70	228	445	42	44	41	
115	4 ¹ / ₄			8.5	15.0	13.5	6.4	0.9	1.9	5.6	2.8	9.0	17.5	1.7	1.7	1.6	
	4 ⁷ / ₁₆																
120	4 ¹¹ / ₁₆	TT08	TP08	254	420	381	190	25	51	156	76	260	508	42	44	44	
125	4 ³ / ₄			10.0	16.5	15.0	7.5	1.0	2.0	6.1	3.0	10.2	20.0	1.7	1.7	1.7	
130	4 ¹⁵ / ₁₆																
135	5 ¹ / ₁₆	TT09	TP09	266	438	400	196	25	54	168	76	266	514	42	44	48	
140	5 ¹ / ₄			10.5	17.2	15.7	7.7	1.0	2.1	6.6	3.0	10.5	20.2	1.7	1.7	1.9	
	5 ⁷ / ₁₆																
150	5 ¹¹ / ₁₆	TT10	TP10	266	464	426	204	25	57	174	86	280	546	48	50	51	
155	5 ³ / ₄			10.5	18.3	16.8	8.0	1.0	2.2	6.9	3.4	11.0	21.5	1.9	2.0	2.0	
160A	5 ¹⁵ / ₁₆																
	6																