

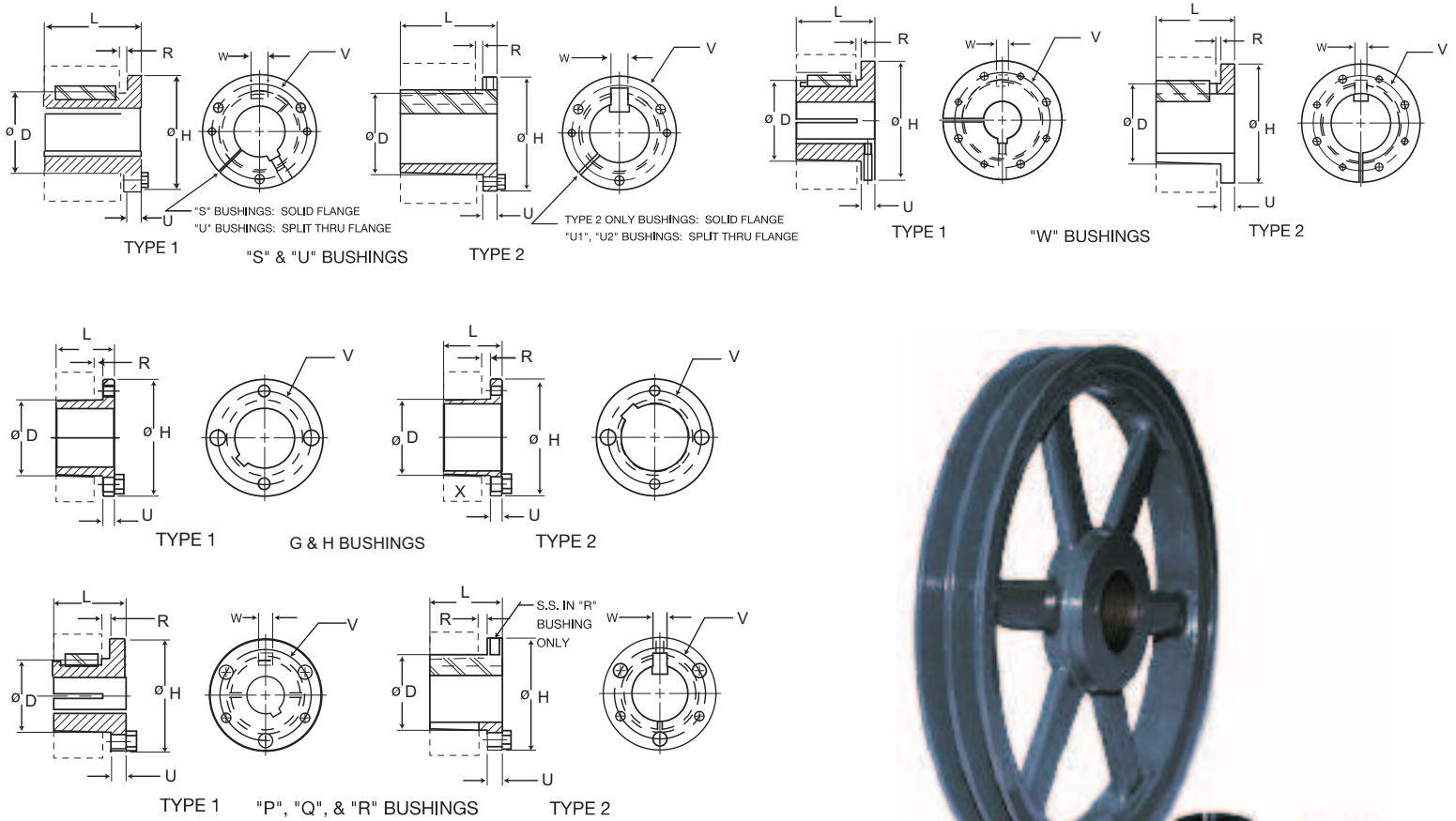
TABLE OF CONTENTS

SPLIT TAPER BUSHINGS	4-6
Q BUSHINGS	7-9
TAPER BORE BUSHINGS (STEEL)	10-11
STEEL HUBS	12
RXT BUSHINGS	13
RXT HUBS	14
CAST IRON SHEAVES	
AK	15
AK-H	16
2AK	17
2AK-H	18
BK	19
BK-H	20
2BK	21
2BK-H	22
Q-BUSHED SHEAVES	
1B - 1 GROOVE	23
2B - 2 GROOVE	24
3B - 3 GROOVE	24
4B - 4 GROOVE	25
5B - 5 GROOVE	25
STEEL SHEAVES AS & BS	26
CAST IRON SHEAVES	
OK, OL and AL	27
1VP	28
2VP	29
1VL, 1VM	30

Not all sizes and series are available from Canadian inventories.
Please check with your local Ringball office for availability.



Split Taper Bushings



Split Taper Bushings

PART NO.	Dimensions													Bore Range		Cap Screws			AV. Wt. Lbs.	Wrench Torque Ln-Lbs.
	L	U	T	D		H	V	W	X	Y	R	S	Type 1	Type 2	No.	Size				
				Large End	Small End											1st	2nd			
G	1"	1/4"	3/4"	1.172"	1.133	2"	1 ⁹ / ₁₆ "	-	5/8"	3/16"	1/8"	3/16"	3/8"-15/16"	1"	2	1/4"	x	5/8"	.5	95
H	1 ¹ / ₄ "	1/4"	1"	1.625	1.570	2 ¹ / ₂ "	2"	-	7/8"	3/16"	1/8"	3/16"	3/8-1 3/8"	1 7/16-1 1/2"	2	1/4"	x	3/4"	.8	95
P1	1 ¹⁵ / ₁₆ "	13/32"	1 ¹⁷ / ₃₂ "	1.9375	1.8555	3"	2 ⁷ / ₁₆ "	3/8"	1 ⁵ / ₁₆ "	7/32"	7/32"	1/4"	1/2-1 7/16"	1 1/2-1 3/4"	3	5/16"	x	1"	1.3	192
P2	2 ¹⁵ / ₁₆ "	13/32"	2 ¹⁷ / ₃₂ "	1.9375	1.7930	3"	2 ⁷ / ₁₆ "	3/8"	2 ⁵ / ₁₆ "	7/32"	7/32"	1/4"	3/4-1 7/16"	1 1/2-1 3/4"	3	5/16"	x	1"	1.5	192
P3	4 ⁷ / ₁₆ "	13/32"	4 ¹ / ₃₂ "	1.9375	1.6993	3"	2 ⁷ / ₁₆ "	3/8"	3 ¹³ / ₁₆ "	7/32"	7/32"	1/4"	1 1/8-1 3/8"	1 5/8"	3	5/16"	x	1"	2	192
B	1 ¹⁵ / ₁₆ "	1/2"	1 ⁷ / ₁₆ "	2.625	2.5567	3 ¹¹ / ₁₆ "	3 1/8"	1/2"	1 ³ / ₁₆ "	7/32"	1/4"	1/4"	1/2-1 15/16"	2-2 7/16"	3	5/16"	x	1 1/4"	1.8	192
Q1	2 ¹ / ₂ "	17/32"	1 ³¹ / ₃₂ "	2.875	2.7657	4 ¹ / ₈ "	3 3/8"	1/2"	1 ³ / ₄ "	7/32"	7/32"	9/32"	3/4-2 1/16"	2 1/8-2 11/16"	3	3/8"	x	1 1/4"	3.5	348
Q2	3 ¹ / ₂ "	17/32"	2 ³¹ / ₃₂ "	2.875	2.7032	4 ¹ / ₈ "	3 3/8"	1/2"	2 ³ / ₄ "	7/32"	7/32"	9/32"	1-2 1/16"	2 1/8-2 5/8"	3	3/8"	x	1 1/4"	4.5	348
Q3	5"	17/32"	4 ¹⁵ / ₃₂ "	2.875	2.6094	4 ¹ / ₈ "	3 3/8"	1/2"	4 ¹ / ₄ "	7/32"	7/32"	9/32"	1 3/8-2 1/16"	2 1/8-2 1/2"	3	3/8"	x	1 1/4"	5.5	348
R1	2 ⁷ / ₈ "	5/8"	2 1/4"	4.000	3.8750	5 ³ / ₈ "	4 5/8"	3/4"	2"	1/4"	1/4"	9/32"	1 1/8-2 13/16"	2 7/8-3 3/4"	3	3/8"	x	1 3/4"	7.5	348
R2	4 ¹ / ₈ "	5/8"	4 ¹ / ₄ "	4.000	3.7500	5 ³ / ₈ "	4 5/8"	3/4"	4"	1/4"	1/4"	9/32"	1 3/8-2 13/16"	2 7/8-3 5/8"	3	3/8"	x	1 3/4"	11	348
S1	4 ³ / ₈ "	3/4"	3 ⁵ / ₈ "	4.625	4.4180	6 ³ / ₈ "	5 3/8"	3/4"	3 ⁵ / ₁₆ "	5/16"	5/16"	3/8"	1 11/16-3-3/16"	3 1/4-4 1/4"	3	1/2"	x	2 1/4"	13.5	840
S2	6 ³ / ₄ "	3/4"	6"	4.625	4.2696	6 ³ / ₈ "	5 3/8"	3/4"	5 ¹¹ / ₁₆ "	5/16"	5/16"	3/8"	3 1/4-4 3/16"	3 1/4-4 3/16"	3	1/2"	x	2 1/4"	19	840
U0	5 ¹ / ₄ "	1 ¹ / ₁₆ "	4 ³ / ₁₆ "	6.000	5.7656	8 ³ / ₈ "	7"	1 ¹ / ₄ "	3 ³ / ₄ "	7/16"	7/16"	15/32"	2 3/8-3 1/16"	-	3	5/8"	x	2 3/4"	30	1680
U0	4 ¹⁵ / ₁₆ "	3/4"	4 ³ / ₁₆ "	6.000	5.7656	8 ³ / ₈ "	7"	1 ¹ / ₄ "	3 ³ / ₄ "	7/16"	7/16"	15/32"	3 1/4-4 1/4"	4 3/8-5 1/2"	3	5/8"	x	2 3/4"	27	1680
U1	7 ¹ / ₈ "	1 ¹ / ₁₆ "	6 ¹ / ₁₆ "	6.000	5.6485	8 ³ / ₈ "	7"	1 ¹ / ₄ "	5 ⁵ / ₈ "	7/16"	7/16"	15/32"	2 3/8-4 1/4"	4 3/8-5 1/2"	3	5/8"	x	2 3/4"	40	1680
U2	10 ¹ / ₈ "	1 ¹ / ₁₆ "	9 ¹ / ₁₆ "	6.000	5.4610	8 ³ / ₈ "	7"	1 ¹ / ₄ "	8 ⁵ / ₈ "	7/16"	7/16"	15/32"	2 7/16-4 1/4"	4 3/8-5"	3	5/8"	x	2 3/4"	50	1680
W1	8 ¹ / ₄ "	1 ⁷ / ₁₆ "	6 ¹³ / ₁₆ "	8.500	8.1016	12 ¹ / ₂ "	10"	1 ¹ / ₄ "	6 ³ / ₈ "	7/16"	7/16"	9/16"	3 3/8-6 3/16"	6 1/4-7 7/16"	4	3/4"	x	3"	104	3000
W2	11 ¹ / ₄ "	1 ⁷ / ₁₆ "	9 ¹³ / ₁₆ "	8.500	7.9141	12 ¹ / ₂ "	10"	1 ¹ / ₄ "	9 ³ / ₈ "	7/16"	7/16"	9/16"	3 3/8-6 3/16"	6 1/4-7 7/16"	4	3/4"	x	3"	133	3000
Y0	11 ¹ / ₈ "	2"	9 ¹ / ₈ "	12.000	11.4688	16 ¹ / ₂ "	14 1/2"	2"	8 ¹ / ₂ "	5/8"	5/8"	5/8"	6-7 15/16"	8-10"	4	1"	x	5"	270	7200

Note: Taper on all Bushings is 3/4" Per Foot on Diameter.

Split Taper Bushings

COMPLETE ROUND SHAFT COVERAGE Plus MILLIMETER AND SPLINE BORES

Table No.1

Stock Inch Bore Bushings

Stock Bores	Keyseat	G	H	P1	P2	P3	B	Q1	Q2	Q3	R1	R2	S1
3/8"	None	x	x	-	-	-	-	-	-	-	-	-	-
7/16	None	x	x	-	-	-	-	-	-	-	-	-	-
1/2	1/8x1/16	x	x	x	-	-	x	-	-	-	-	-	-
9/16	1/8x1/16	x	x	x	-	-	x	-	-	-	-	-	-
19/32	3/16x3/32	-	x	-	-	-	-	-	-	-	-	-	-
5/8	3/16x3/32	x	x	x	-	-	x	-	-	-	-	-	-
21/32	3/16x3/32	-	x	x	-	-	-	-	-	-	-	-	-
11/16	3/16x3/32	x	x	x	-	-	x	-	-	-	-	-	-
3/4	3/16x3/32	x	x	x	x	-	x	x	-	-	-	-	-
25/32	3/16x3/32	-	x	x	-	-	-	-	-	-	-	-	-
13/16	3/16x3/32	x	x	x	x	-	x	x	-	-	-	-	-
7/8	3/16x3/32	x	x	x	x	-	x	x	-	-	-	-	-
15/16	1/4x1/8	x*	x	x	x	-	x	x	-	-	-	-	-
31/32	1/4x1/8	-	x	x	-	-	-	-	-	-	-	-	-
1	1/4x1/8	x*	x	x	x	-	x	x	x	-	-	-	-
1 1/16	1/4x1/8	-	x	x	x	-	x	x	x	-	-	-	-
1 1/8	1/4x1/8	-	x	x	x	x	x	x	x	-	x	-	-
1 3/16	1/4x1/8	-	x	x	x	-	x	x	x	-	x	-	-
1 1/4	1/4x1/8	-	x*	x	x	-	x	x	x	-	x	-	-
1 5/16	5/16x5/32	-	x*	x	x	-	x	x	x	-	x	-	-
1 3/8 **	5/16x5/32	-	x*	x	x	x*	x	x	x	x	x	x	-
1 3/8 **	3/8x3/16	-	x*	x	x	-	x	x	x	-	x	-	-
1 7/16	3/8x3/16	-	x*	x	x*	-	x	x	x	x	x	x	-
1 1/2	3/8x3/16	-	x*	x	x	-	x	x	x	x	x	x	-
1 9/16	3/8x3/16	-	-	x	x	-	x	x	x	x	x	x	-
1 5/8	3/8x3/16	-	-	x	x	x	x	x	x	x	x	x	-
1 11/16	3/8x3/16	-	-	x	x	-	x	x	x	x	x	x	x
1 3/4	3/8x3/16	-	-	x	x	-	x	x	x	x	x	x	x

Table No.2

Stock Bores	Keyseat	W1	W2
5 5/8	1 1/2x3/4	x	x
5 3/4	1 1/2x3/4	x	x
5 7/8	1 1/2x3/4	x	x
5 15/16	1 1/2x3/4	x	x
6	1 1/2x3/4	x	x
6 1/8	1 1/2x3/4	x	x
6 3/16	1 1/2x3/4	x	x
6 1/4	1 1/2x3/4	x	x
6 3/8	1 1/2x3/4	x	x
6 7/16	1 1/2x3/4	x	x
6 1/2	1 1/2x3/4	x	x
6 5/8	1 3/4x3/4	x	x
6 3/4	1 3/4x3/4	x	x
6 7/8	1 3/4x3/4	x	x
6 15/16	1 3/4x3/4	x	x
7	1 3/4x3/4	x	x
7 1/8	1 3/4x3/4	x	x
7 3/16	1 3/4x3/4	x	x
7 1/4	1 3/4x3/4	x	x
7 3/8	1 3/4x3/4	x	x
7 7/16	1 3/4x3/4	x	x

Stock Millimeter Bore Bushings

Table No.3

Stock Bores	Keyseat (Millimeters)	G	H	P1	B	Q1	R1	R2
10 mm.	None	x	x	-	-	-	-	-
11 mm.	None	x	x	-	-	-	-	-
12 mm.	None	x	x	-	-	-	-	-
14 mm.	5x2.5	x	x	x	-	-	-	-
15 mm.	5x2.5	-	-	x	x	-	-	-
16 mm.	5x2.5	x	x	x	x	-	-	-
18 mm.	6x3	x	x	x	x	x	-	-
19 mm.	6x3	x	x	x	x	x	-	-
20 mm.	6x3	x	x	x	x	x	-	-
22 mm.	6x3	x	x	x	x	x	-	-
24 mm.	8x3.5	x	x	x	x	x	-	-
25 mm.	8x3.5	x	x	x	x	x	-	-
28 mm.	8x3.5	-	x	x	x	x	x	-
30 mm.	8x3.5	-	x	x	x	x	x	-
32 mm.	10x4	-	x	x	x	x	x	-
35 mm.	10x4	-	x	x	x	x	x	x
36 mm.	10x4	-	x	x	x	x	x	x
38 mm.	10x4	-	x	x	x	x	x	x
39 mm.	12x4	-	-	x	x	-	-	x
40 mm.	12x4	-	-	x	x	x	x	x
42 mm.	12x4	-	-	x	x	x	x	x
45 mm.	14x4.5	-	-	-	x	x	x	x
48 mm.	14x4.5	-	-	-	x	x	x	x
50 mm.	14x4.5	-	-	-	x	x	x	x
55 mm.	16x5	-	-	-	x	x	x	x
60 mm.	18x5.5	-	-	-	x	x	x	x
65 mm.	18x5.5	-	-	-	-	x	x	x
70 mm.	20x6	-	-	-	-	-	x	x
75 mm.	20x6	-	-	-	-	-	-	x
80 mm.	22x7	-	-	-	-	-	-	x
85 mm.	22x7	-	-	-	-	-	-	x
90 mm.	25x7	-	-	-	-	-	-	x
95 mm.	25x7	-	-	-	-	-	-	x

		B	Q1	Q2	Q3	R1	R2	S1	S2	U0	U1	U2
1 13/16	1/2x1/4	x	x	x	x	x	x	-	-	-	-	-
1 7/8	1/2x1/4	x	x	x	x	x	x	x	-	-	-	-
1 15/16	1/2x1/4	x	x	x	x	x	x	x	-	-	-	-
2	1/2x1/4	x	x	x	x	x	x	x	-	-	-	-
2 1/16	1/2x1/4	x	x	x	x	x	x	-	-	-	-	-
2 1/8	1/2x1/4	x	x	x	x	x	x	x	-	-	-	-
2 3/16	1/2x1/4	x	x	x	x	x	x	x	-	-	-	-
2 1/4	1/2x1/4	x	x	x	x	x	x	x	-	-	-	-
2 5/16	5/8x5/16	x	x	x	x	x	x	x	-	-	-	-
2 3/8	5/8x5/16	x	x	x	x	x	x	x	x	-	-	-
2 7/16	5/8x5/16	x	x	x	x	x	x	x	x	x	-	-
2 1/2	5/8x5/16	-	x	x	x	x	x	x	x	x	x	-
2 9/16	5/8x5/16	-	x	x	-	x	x	x	x	x	x	-
2 5/8	5/8x5/16	-	x	x	-	x	x	x	x	x	x	-
2 11/16	5/8x5/16	-	x	-	-	x	x	x	x	x	x	-
2 3/4	5/8x5/16	-	-	-	-	x	x	x	x	x	x	-
2 13/16	3/4x3/8	-	-	-	-	x	x	-	-	-	-	-
2 7/8	3/4x3/8	-	-	-	-	x	x	x	x	x	x	-
2 15/16	3/4x3/8	-	-	-	-	x	x	x	x	x	x	-
3	3/4x3/8	-	-	-	-	x	x	x	x	x	x	-
3 1/8	3/4x3/8	-	-	-	-	x	x	x	x	x	x	-
3 3/16	3/4x3/8	-	-	-	-	x	x	x	x	x	x	-
3 1/4	3/4x3/8	-	-	-	-	x	x	x	x	x	x	-

Stock Spline Bore Bushings

Table No.4

Spline	H	P1	Q1	Q2
.978-10 Inv.	x	x	-	-
1 1/8-6B	x	x	x	-
1 1/4-10B	-	x	-	-
1 3/8-6B	x	x	x	x
1 3/8-10B	-	x	x	-
1 3/8-21Inv.	x	x	x	-

*These sizes have a Shallow Keyseat. Special Keys are furnished to fit standard depth keyseats in shafts.

**1 3/8 Bore Bushings with 5/16x5/32 Keyway will be supplied unless the 3/8x3/16 Keyway is specified on the order.

Stock bore tolerances: up to and incl. 1" **-.000/ +.001"**, 1" up to and incl. 3" **-.000/ +.002"**, over 3" **-.000/ +.003"**



Split Taper Bushings

Split Taper Bushings

COMPLETE ROUND SHAFT COVERAGE Plus MILLIMETER AND SPLINE BORES

Table No.1 Stock Inch Bore Bushings

Stock Bores	Keyseat	R1	R2	S1	S2	U0	U1	U2	W1	W2
3 3/8	7/8x7/16	x	x	x	x	x	x	x	x	x
3 7/16	7/8x7/16	x	x	x	x	x	x	x	x	x
3 1/2	7/8x7/16	x	x	x	x	x	x	x	x	x
3 5/8	7/8x7/16	x	x	x	x	x	x	x	x	x
3 11/16	7/8x7/16	x	-	x	x	x	x	x	x	x
3 3/4	7/8x7/16	x	-	x	x	x	x	x	x	x
3 7/8	1x1/2	-	-	x	x	x	x	x	x	x
3 15/16	1x1/2	-	-	x	x	x	x	x	x	x
4	1x1/2	-	-	x	x	x	x	x	x	x
4 1/8	1x1/2	-	-	x	x	x	x	x	x	x
4 3/16	1x1/2	-	-	x	x	x	x	x	x	x
4 1/4	1x1/2	-	-	x	-	x	x	x	x	x
4 3/8	1x1/2	-	-	-	-	x	x	x	x	x
4 7/16	1x1/2	-	-	-	-	x	x	x	x	x
4 1/2	1x1/2	-	-	-	-	x	x	x	x	x
4 5/8	1 1/4x5/8	-	-	-	-	x	x	x	x	x
4 11/16	1 1/4x5/8	-	-	-	-	x	x	x	-	-
4 3/4	1 1/4x5/8	-	-	-	-	x	x	x	x	x
4 7/8	1 1/4x5/8	-	-	-	-	x	x	x	x	x
4 15/16	1 1/4x5/8	-	-	-	-	x	x	x	x	x
5	1 1/4x5/8	-	-	-	-	x	x	x	x	x
		U0	U1	W1	W2					
5 1/8"	1 1/4x5/8	x	x	x	x					
5 3/16	1 1/4x5/8	x	x	x	x					
5 1/4	1 1/4x5/8	x	x	x	x					
5 3/8	1 1/4x5/8	x	x	x	x					
5 7/16	1 1/4x5/8	x	x	x	x					
5 1/2	1 1/4x5/8	x	x	x	x					

Table No.2

Stock Bore	Keyseat	W1	W2
5 5/8	1 1/2x3/4	x	x
5 3/4	1 1/2x3/4	x	x
5 7/8	1 1/2x3/4	x	x
5 15/16	1 1/2x3/4	x	x
6	1 1/2x3/4	x	x
6 1/8	1 1/2x3/4	x	x
6 3/16	1 1/2x3/4	x	x
6 1/4	1 1/2x3/4	x	x
6 3/8	1 1/2x3/4	x	x
6 7/16	1 1/2x3/4	x	x
6 1/2	1 1/2x3/4	x	x
6 5/8	1 3/4x3/4	x	x
6 3/4	1 3/4x3/4	x	x
6 7/8	1 3/4x3/4	x	x
6 15/16	1 3/4x3/4	x	x
7	1 3/4x3/4	x	x
7 1/8	1 3/4x3/4	x	x
7 3/16	1 3/4x3/4	x	x
7 1/4	1 3/4x3/4	x	x
7 3/8	1 3/4x3/4	x	x
7 7/16	1 3/4x3/4	x	x

Stock Millimeter Bore Bushings

Table No.3

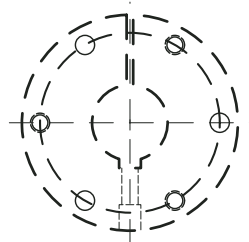
Stock Bores	Keyseat (Millimeters)	G	H	P1	B	Q1	R1	R2
10 mm.	None	x	x	-	-	-	-	-
11 mm.	None	x	x	-	-	-	-	-
12 mm.	None	x	x	-	-	-	-	-
14 mm.	5x2.5	x	x	x	-	-	-	-
15 mm.	5x2.5	-	-	x	x	-	-	-
16 mm.	5x2.5	x	x	x	x	-	-	-
18 mm.	6x3	x	x	x	x	x	-	-
19 mm.	6x3	x	x	x	x	x	-	-
20 mm.	6x3	x	x	x	x	x	-	-
22 mm.	6x3	x	x	x	x	x	-	-
24 mm.	8x3.5	x	x	x	x	x	-	-
25 mm.	8x3.5	x	x	x	x	x	-	-
28 mm.	8x3.5	-	x	x	x	x	x	-
30 mm.	8x3.5	-	x	x	x	x	x	-
32 mm.	10x4	-	x	x	x	x	x	-
35 mm.	10x4	-	x	x	x	x	x	x
36 mm.	10x4	-	x	x	x	x	x	x
38 mm.	10x4	-	x	x	x	x	x	x
39 mm.	12x4	-	-	x	x	-	x	x
40 mm.	12x4	-	-	x	x	x	x	x
42 mm.	12x4	-	-	x	x	x	x	x
45 mm.	14x4.5	-	-	-	x	x	x	x
48 mm.	14x4.5	-	-	-	x	x	x	x
50 mm.	14x4.5	-	-	-	x	x	x	x
55 mm.	16x5	-	-	-	x	x	x	x
60 mm.	18x5.5	-	-	-	x	x	x	x
65 mm.	18x5.5	-	-	-	-	x	x	x
70 mm.	20x6	-	-	-	-	-	x	x
75 mm.	20x6	-	-	-	-	-	x	x
80 mm.	22x7	-	-	-	-	-	x	x
85 mm.	22x7	-	-	-	-	-	x	x
90 mm.	25x7	-	-	-	-	-	x	x
95 mm.	25x7	-	-	-	-	-	x	-

Stock Spline Bore Bushings

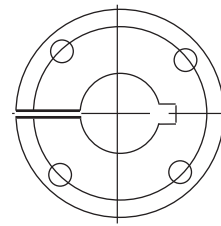
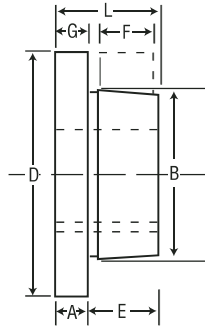
Table No.4

Spline	H	P1	Q1	Q2
.978-10 Inv.	x	x	-	-
1 1/8-6B	x	x	x	-
1 1/4-10B	-	x	-	-
1 3/8-6B	x	x	x	x
1 3/8-10B	-	x	x	-
1 3/8-21Inv.	x	x	x	-

Stock bore tolerances: up to and incl. 1" **-.000/ +.001"**, 1" up to and incl. 3" **-.000/ +.002"**, over 3" **-.000/ +.003"**



BUSHINGS JA TO J



BUSHINGS M TO N

Table No.1 Bushing Specifications

Bushing	Bore Range	Dimensions							Capscrews			Torque Capacity In.-Lbs.	Wrench Torque Ft. Lbs.	Average Weight Lbs.
		D	L	F	B	G	E (F+G)	A	No.	Size	Bolt Circle			
JA	1/2"-1 1/4"	2"	1"	1/2"	1.375"	3/16"	11/16"	5/16"	3	10-24x1	1 21/32"	1000	6	.8
SH	1/2-1 5/8	2 11/16	1 5/16	21/32	1.871	7/32	7/8	7/16	3	1/4-20x1 3/8	2 1/4	3500	9	1.0
SDS	1/2-2	3 1/8	1 5/16	21/32	2.1875	7/32	7/8	7/16	3	1/4-20x1 3/8	2 11/16	5000	9	1.2
SD	1/2-2	3 1/8	1 13/16	1 5/32	2.1875	7/32	1 3/8	7/16	3	1/4-20x1 7/8	2 11/16	5000	9	1.5
SK	1/2-2 5/8	3 7/8	1 15/16	1 5/32	2.8125	7/32	1 3/8	9/16	3	5/16-18x2	3 5/16	7000	15	2.0
SF	1/2-2 15/16	4 5/8	2 1/16	1 7/32	3.125	7/32	1 7/16	5/8	3	3/8-16x2	3 7/8	11000	30	3.5
E	7/8-3 1/2	6	2 3/4	1 19/32	3.834	9/32	1 7/8	7/8	3	1/2-13x2 3/4	5	20000	60	9.0
F	1 -4	6 5/8	3 3/4	2 13/32	4.4375	11/32	2 3/4	1	3	9/16-12x3 5/8	5 5/8	30000	75	14
J	1 1/2-4 1/2	7 1/4	4 5/8	3 3/16	5.1484	5/16	3 1/2	1 1/8	3	5/8-11x4 1/2	6 1/4	45000	135	22
M	2 -5 1/2	9	6 3/4	5 5/32	6.494	11/32	5 1/2	1 1/4	4	3/4-10x6 3/4	7 7/8	85000	225	51
N	2 7/16-5 7/8	10	8 1/8	6 1/16	6.992	9/16	6 5/8	1 1/2	4	7/8-9x8	8 1/2	150000	300	66
P	2 15/16-7	11 3/4	9 3/8	7	8.242	5/8	7 5/8	1 3/4	4	1-8x9 1/2	10	250000	450	122

NOTE-All Bushings shown except JA have setscrew over Keyway.

Table No.1 Stock Inch Bore Bushings

Stock Bores	Keyseat	JA	SH	SDS	SD	SK	SF	E	F	J
1/2	1/8X1/16	X	X	X	X	X	X	-	-	-
9/16	1/8X1/16	X	X	X	X	X	X	-	-	-
5/8	3/16X3/32	X	X	X	X	X	X	-	-	-
11/16	3/16X3/32	X	X	X	X	X	X	-	-	-
3/4	3/16X3/32	X	X	X	X	X	X	-	-	-
13/16	3/16X3/32	X	X	X	X	X	X	-	-	-
7/8	3/16X3/32	X	X	X	X	X	X	X	-	-
15/16	1/4X1/8	X	X	X	X	X	X	X	-	-
1	1/4X1/8	X	X	X	X	X	X	X	X	-
1 1/16	1/4X1/8	S	X	X	X	X	X	X	X	-
1 1/8	1/4X1/8	S	X	X	X	X	X	X	X	-
1 3/16	1/4X1/8	S	X	X	X	X	X	X	X	-
1 1/4	1/4X1/8	-	X	X	X	X	X	X	X	-
1 5/16	5/16X5/32	-	X	X	X	X	X	X	X	-
1 5/16*	3/8X3/16	-	X	X	X	X	X	X	X	-
1 3/8	5/16X5/32	-	X	X	X	X	X	X	X	-
1 3/8*	3/8X3/16	-	X	X	X	X	X	X	X	-
1 7/16	3/8X3/16	-	S	X	X	X	X	X	X	-
1 1/2	3/8X3/16	-	S	X	X	X	X	X	X	X
1 9/16	3/8X3/16	-	S	X	X	X	X	X	X	X
1 5/8	3/8X3/16	-	S	X	X	X	X	X	X	X
1 11/16	3/8X3/16	-	-	S	S	X	X	X	X	X

Table No.1[Cont.(SEE IN P7)]



Q BUSHINGS

Stock Inch Bore Bushings

Table No.1

Stock Bores	Keyseat	SDS	SD	SK	SF	E	F	J	M	N
1 3/4	3/8X3/16	S	S	X	X	X	X	X	-	-
1 13/16	1/2X1/4	S	S	X	X	X	X	X	-	-
1 7/8	1/2X1/4	S	S	X	X	X	X	X	-	-
1 15/16	1/2X1/4	S	S	X	X	X	X	X	-	-
2	1/2X1/4	N	N	X	X	X	X	X	X	-
2 1/16	1/2X1/4	-	-	X	X	X	X	X	X	-
2 1/8	1/2X1/4	-	-	X	X	X	X	X	X	-
2 3/16	1/2X1/4	-	-	S	X	X	X	X	X	-
2 1/4	1/2X1/4	-	-	S	X	X	X	X	X	-
2 5/16	5/8X5/16	-	-	S	S	X	X	X	X	-
2 3/8	5/8X5/16	-	-	S	S	X	X	X	X	-
2 7/16	5/8X5/16	-	-	S	S	X	X	X	X	X
2 1/2	5/8X5/16	-	-	S	S	X	X	X	X	X
2 9/16	5/8X5/16	-	-	N	S	X	X	X	X	X
2 5/8	5/8X5/16	-	-	N	S	X	X	X	X	X
Stock Bores	Keyseat	SF	E	F	J	M	N	P		
2 11/16	5/8X5/16	S	X	X	X	X	X	-		
2 3/4	5/8X5/16	S	X	X	X	X	X	-		
2 13/16	3/4X3/8	S	X	X	X	X	X	-		
2 7/8	3/4X3/8	S	X	X	X	X	X	-		
2 15/16	3/4X3/8	S	S	X	X	X	X	X		
3	3/4X3/8	-	S	X	X	X	X	X		
3 1/16	3/4X3/8	-	S	X	X	X	X	X		
3 1/8	3/4X3/8	-	S	X	X	X	X	X		
3 3/16	3/4X3/8	-	S	X	X	X	X	X		
3 1/4	3/4X3/8	-	S	X	X	X	X	X		
3 5/16	7/8X7/16	-	S	S	X	X	X	X		
3 3/8	7/8X7/16	-	S	S	X	X	X	X		
3 7/16	7/8X7/16	-	S	S	X	X	X	X		
3 1/2	7/8X7/16	-	S	S	X	X	X	X		
3 9/16	7/8X7/16	-	-	S	X	X	X	X		
3 5/8	7/8X7/16	-	-	S	X	X	X	X		
3 11/16	7/8X7/16	-	-	S	X	X	X	X		
3 3/4	7/8X7/16	-	-	S	X	X	X	X		
3 13/16	7/8X7/16	-	-	S	X	X	X	X		
3 7/8	1X1/2	-	-	S	S	X	X	X		
3 15/16	1X1/2	-	-	S	S	X	X	X		
4	1X1/2	-	-	N	S	X	X	X		

X=Stock Bore with Standard Keyway.

N=Stock Bore with No Keyway.

S=Stock Bore with Shallow Keyway;Rectangular Key is furnished to fit standard keyseat.

Table No.1[Cont.(SEE IN P8]

Stock Inch Bore Bushings

Table No.1

Stock Bores	Keyseat	J	M	N	P
4 1/16	1X1/2	S	X	X	X
4 1/8	1X1/2	S	X	X	X
4 3/16	1X1/2	S	X	X	X
4 1/4	1X1/2	S	X	X	X
4 5/16	1X1/2	S	X	X	X
4 3/8	1X1/2	S	X	X	X
4 7/16	1X1/2	S	X	X	X
4 1/2	1X1/2	S	X	X	X
4 9/16	1X1/2	-	X	X	X
4 5/8	1 1/4X5/8	-	X	X	X
4 11/16	1 1/4X5/8	-	X	X	X
4 3/4	1 1/4X5/8	-	S	X	X
4 13/16	1 1/4X5/8	-	S	X	X
4 7/8	1 1/4X5/8	-	S	X	X
4 15/16	1 1/4X5/8	-	S	X	X
5	1 1/4X5/8	-	S	X	X
5 1/16	1 1/4X5/8	-	S	X	X
5 1/8	1 1/4X5/8	-	S	S	X
5 3/16	1 1/4X5/8	-	S	S	X
5 1/4	1 1/4X5/8	-	S	S	X
5 5/16	1 1/4X5/8	-	S	S	X
5 3/8	1 1/4X5/8	-	S	S	X
5 7/16	1 1/4X5/8	-	S	S	X
5 1/2	1 1/4X5/8	-	S	S	X

(Table NO.1 Cont.)

Stock Bores	Keyseat	N	P
5 9/16	1 1/2x3/4	S	x
5 5/8	1 1/2x3/4	S	x
5 11/16	1 1/2x3/4	S	x
5 3/4	1 1/2x3/4	S	x
5 13/16	1 1/2x3/4	S	x
5 7/8	1 1/2x3/4	S	S
5 15/16	1 1/2x3/4	-	S
6	1 1/2x3/4	-	S
6 1/16	1 1/2x3/4	-	S
6 1/8	1 1/2x3/4	-	S
6 3/16	1 1/2x3/4	-	S
6 1/4	1 1/2x3/4	-	S
6 5/16	1 1/2x3/4	-	S
6 3/8	1 1/2x3/4	-	S
6 7/16	1 1/2x3/4	-	S
6 1/2	1 1/2x3/4	-	S
6 9/16	13/4x3/4	-	S
6 5/8	13/4x3/4	-	S
6 11/16	13/4x3/4	-	S
6 3/4	13/4x3/4	-	S
6 13/16	13/4x3/4	-	S
6 7/8	13/4x3/4	-	S
6 15/16	13/4x3/4	-	S
7	13/4x3/4	-	S

Stock Millimeter Bore Bushings

Table No.2

Stock Bores	Keyseat (millimeters)	SH	SDS	SD	SK	SF	E	F	J
24	8X3.5	X	X	X	X	-	-	-	-
25	8X3.5	X	X	X	X	-	-	-	-
28	8X3.5	X	X	X	X	X	-	-	-
30	8X3.5	X	X	X	X	X	-	-	-
32	10X4	X	X	X	X	X	-	-	-
35	10X4	X	X	X	X	X	X	-	-
38	10X4	-	X	X	X	X	X	-	-
40	12X4	-	X	X	X	X	X	-	-
42	12X4	-	X	X	X	X	X	-	-
45	14X4.5	-	-	-	-	X	X	X	-
48	14X4.5	-	-	-	X	X	X	X	-
50	14X4.5	-	-	-	X	X	X	X	X
55	16X5	-	-	-	X	X	X	X	X
60	18X5.5	-	-	-	-	X	X	X	X
65	18X5.5	-	-	-	-	-	X	X	X
70	20X6	-	-	-	-	-	X	X	X
75	20X6	-	-	-	-	-	X	X	X
80	22X7	-	-	-	-	-	-	X	X
85	22X7	-	-	-	-	-	-	X	X
90	25X7	-	-	-	-	-	-	X	X
95	25X7	-	-	-	-	-	-	-	X
100	28X8	-	-	-	-	-	-	-	X

X=Stock Bore with Standard Keyway.
 N=Stock Bore with No Keyway.
 S=Stock Bore with Shallow Keyway; Rectangular Key is furnished to fit standard keyseat.

Table No.1 Bushings Specifications and Dimensions(inches)

Bushing No.	A	B	D Bolt Circle	Capscrews		Stock Bore Range			Wrench Torque in.lbs.	Torque Cap.Lb. In.	Wt. lbs
				Dia.	length	min	Max				
							Std Kw.	Shallow Kw.			
1008	1 25/64	7/8	1 21/64	1/4	1/2	1/2	7/8	1	55	1,200	.27
1108	1.511	7/8	1 29/64	1/4	1/2	1/2	1	1/8	55	1,300	.33
1210	1 7/8	1	1 3/4	3/8	5/8	1/2	1 1/4	1 1/4	175	3,600	.61
1215	1 7/8	1 1/2	1 3/4	3/8	5/8	1/2	1 1/4	1 1/4	175	3,550	.80
1610	2 1/4	1	2 1/8	3/8	5/8	1/2	1 1/2	1 5/8	175	4,300	.90
1615	2 1/4	1 1/2	2 1/8	3/8	5/8	1/2	1 1/2	1 5/8	175	4,300	1.2
2012	2 3/4	1 1/4	2 5/8	7/16	7/8	1/2	1 7/8	2	280	7,150	1.70
2517	3 3/8	1 3/4	3 1/4	1/2	1	1/2	2 1/4	2 1/2	430	11,600	3.5
2525	3 3/8	2 1/2	3 1/4	1/2	1	3/4	2 1/4	2 1/2	430	11,300	4.9
3020	4 1/4	2	4	5/8	1 1/4	15/16	2 3/4	3	800	24,000	6.5
3030	4 1/4	3	4	5/8	1 1/4	15/16	2 3/4	3	800	24,000	9.2

TAPER-LOCK BUSHINGS 1008-3030

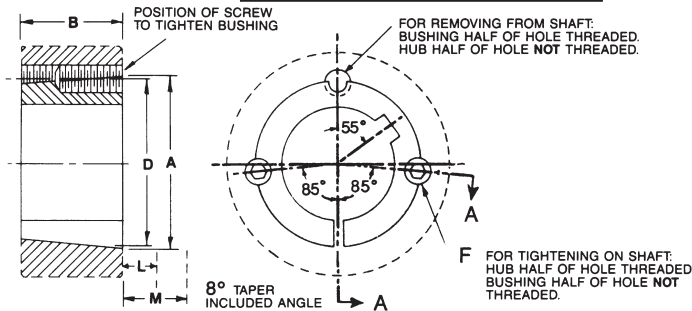


Table NO.2 Stock Bushing Bore

	1008	1108	1210	1215	1610	1615	2012	2517	2525	3020	3030
1/2	x	x	x	x	x	x	x	x	-	-	-
9/16	x	x	x	x	x	x	x	x	-	-	-
5/8	x	x	x	x	x	x	x	x	-	-	-
11/16	x	x	x	x	x	x	x	x	-	-	-
3/4	x	x	x	x	x	x	x	x	x	-	-
13/16	x	x	x	x	x	x	x	x	x	-	-
7/8	x	x	x	x	x	x	x	x	x	-	-
15/16	x	x	x	x	x	x	x	x	x	x	x
1	x	x	x	x	x	x	x	x	x	x	x
1 1/16	-	x	x	x	x	x	x	x	x	x	x
1 1/8	-	x	x	x	x	x	x	x	x	x	x
1 3/16	-	-	x	x	x	x	x	x	x	x	x
1 1/4	-	-	x	x	x	x	x	x	x	x	x
1 5/16	-	-	-	-	x	x	x	x	x	x	x
1 3/8	-	-	-	-	x	x	x	x	x	x	x
1 7/16	-	-	-	-	x	x	x	x	x	x	x
1 1/2	-	-	-	-	x	x	x	x	x	x	x
1 9/16	-	-	-	-	x	x	x	x	x	x	x
1 5/8	-	-	-	-	x	x	x	x	x	x	x
1 11/16	-	-	-	-	-	x	x	x	x	x	x
1 3/4	-	-	-	-	-	-	x	x	x	x	x
1 13/16	-	-	-	-	-	-	x	x	x	x	x
1 7/8	-	-	-	-	-	-	x	x	x	x	x
1 15/16	-	-	-	-	-	-	-	x	x	x	x
2	-	-	-	-	-	-	-	x	x	x	x
2 1/16	-	-	-	-	-	-	-	x	x	x	x
2 1/8	-	-	-	-	-	-	-	x	x	x	x
2 3/16	-	-	-	-	-	-	-	x	x	x	x
2 1/4	-	-	-	-	-	-	-	x	x	x	x
2 5/16	-	-	-	-	-	-	-	x	x	x	x
2 3/8	-	-	-	-	-	-	-	x	x	x	x
2 7/16	-	-	-	-	-	-	-	x	x	x	x
2 1/2	-	-	-	-	-	-	-	x	x	x	x
2 9/16	-	-	-	-	-	-	-	-	-	x	x
2 5/8	-	-	-	-	-	-	-	-	-	x	x

Table No.2 Stock Bores

	3020	3030
2 11/16	x	x
2 3/4	x	x
2 13/16	x	x
2 7/8	x	x
2 15/16	x	x
3	x	x

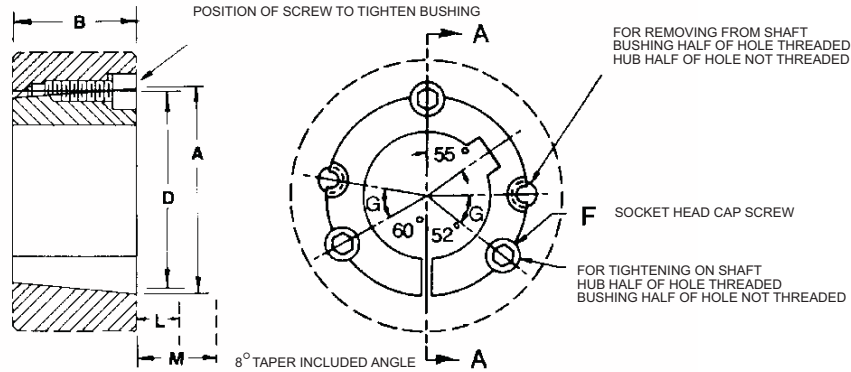
Table No.3 Standard Keyseats

Bore Range	Keyseat	Bore Range	Keyseat
1/2-9/16	1/8x1/16	2 5/16-2 3/4	5/8x5/16
5/8-7/8	3/16x3/32	2 13/16-3 1/4	3/4x3/8
15/16-1 1/4	1/4x1/8	3 3/8-3 3/4	7/8x7/16
1 5/16- 1 3/8	5/16x5/32	3 7/8-4 1/2	1x1/2
1 7/16-1 3/4	3/8x3/16	4 5/8-5	1 1/4x5/8
1 13/16-2 1/4	1/2x1/4		

NOTE: All the above items are made of STEEL; 1 3/8 Bore Bushings also available with 3/8x3/16 Kw.

Taper Bore Bushings (Steel)

3535 thru 5050



3535 thru 5050 Sizes

BUSH NO,	A	B	D	SET SCREWS	G
3535	5	3 1/2"	4.83	1/2x1 1/2	40°
4040	5 3/4	4"	5.54	5/8x1 3/4	40°
4545	6 3/8	4 1/2"	6.13	3/4x2	40°
5050	7	5"	6.72	7/8x2 1/4	37°

Stock Bushing Bore

Table NO. 3

Bore Range D[mm]	Width [mm]	Depth [mm]
10-12	4	1.8
13-17	5	2.3
18-22	6	2.8
23-30	8	3.3
31-38	10	3.3
39-44	12	3.3
45-50	14	3.8
51-58	16	4.3
59-65	18	4.4
66-75	20	4.9
76-85	22	5.4
86-95	25	5.4
96-110	28	6.4
111-130	32	7.4

Table NO.2

	3535	4040	4545	5050
1 3/16	x			
1 1/4	x			
1 5/16	x			
1 3/8	x			
1 7/16	x	x	-	-
1 1/2	x	x	-	-
1 9/16	x	-	-	-
1 5/8	x	x	-	-
1 11/16	x	x	-	-
1 3/4	x	x	-	-
1 13/16	-	x	-	-
1 7/8	x	x	-	-
1 15/16	x	x	x	-
2	x	x	x	x
2 1/16	-	-	-	-
2 1/8	x	x	-	-
2 3/16	x	x	x	-
2 1/4	x	x	-	-
2 5/16	x	x	-	-
2 3/8	x	x	x	-
2 7/16	x	x	x	x
2 1/2	x	x	-	x
2 9/16	-	x	-	-
2 5/8	x	x	x	-

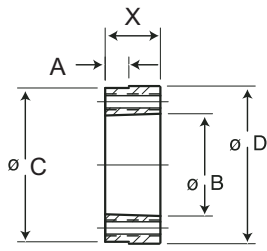
Table No.2

	3535	4040	4545	5050
2 11/16	x	x	-	-
2 3/4	x	x	x	-
2 13/16	-	x	-	-
2 7/8	x	x	x	-
2 15/16	x	x	x	x
3	x	x	x	-
3 1/16	x	-	-	-
3 1/8	x	x	x	-
3 3/16	x	x	x	-
3 1/4	x	x	x	-
3 5/16	x	x	-	-
3 3/8	x	x	x	x
3 7/16	x	x	x	x
3 1/2	x	x	x	-
3 9/16	-	x	-	-
3 5/8	-	x	x	x
3 11/16	-	x	x	-
3 3/4	-	x	x	-
3 13/16	-	x	-	-
3 7/8	-	x	x	x
3 15/16	-	x	x	x
4	-	x	x	x
4 1/8	-	-	x	-
4 3/16	-	-	x	-
4 1/4	-	-	x	x
4 3/8	-	-	x	x
4 7/16	-	-	x	x
4 1/2	-	-	x	x
4 7/8	-	-	-	x
4 15/16	-	-	-	x
5	-	-	-	x

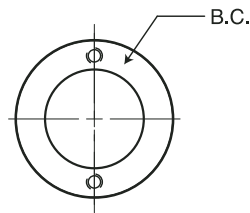
Table NO. 3

BUSH NO,	BORE mm
1008	10,11,12,14,15,16,18,19,20,22,24,25
1108	10,11,12,14,15,16,18,19,20,22,24,25,28
1210 1215	11,12,14,15,16,18,19,20,22,24,25,28,30,32
1310	14,15,16,18,19,20,22,24,25,28,30,32,35
1610 1615	14,15,16,18,19,20,22,24,25,28,30,32,35,38,40,42
2012	18,19,20,22,24,25,28,30,32,35,38,40,42,45,48,50,
2517 2525	20,22,24,25,28,30,32,35,38,40,42,45,48,50,55,60
3020 3030	25,28,30,32,35,38,40,42,45,48,50,55,60,65,70,75
3525 3535	35,38,40,42,45,48,50,55,60,65,70,75,80,85,90,
4030 4040	40,42,45,50,60,65,70,75,80,85,90,95,100
4535 4545	55,60,65,70,75,80,85,90,95,100,105,110,
5040 5050	60,65,70,75,80,85,90,95,100,105,110,115,120,125,

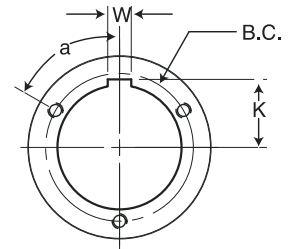
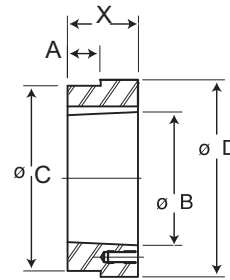
NOTE: All the above items are made of STEEL
1 3/8 Bore Bushings also available with 3/8x3/16 Kw.



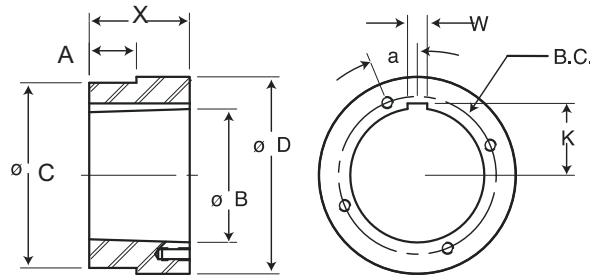
ALL TAPERS 3/4" PER FT. ON DIAMETER



G & "H" HUBS



"P", "Q", "R", "S", & "U" HUBS



"W" HUBS

Steel Hubs for Split Taper Bushings

Part No.	For Bushing	Dimensions									Tapped Holes			Wt. Lbs.
		O.D.	A	B	C	K	Bolt circle	W	X	a	d	No.	Size	
HG1	G	2"	0.174"	1.168	1.875"	—	1 9/16"	—	5/8"	—	5/8"	2	1/4-20	0.4
HH1	H	2 1/2	0.174	1.621	2.375	—	2	—	7/8	—	7/8	2	1/4-20	0.6
HCH1	H	2 1/2	0.625	1.621	2.375	—	2	—	7/8	—	7/8	2	1/4-20	0.7
HP1	P1	3	0.292	1.9375	2.875	1 3/32"	2 7/16	3/8"	1 5/16	60°	5/8	3	5/16-18	1.4
HCP1	P1	3	1.000	1.9375	2.875	1 3/32	2 7/16	3/8	1 5/16	60	5/8	3	5/16-18	1.1
HP2	P2	3	1.100	1.9375	2.875	1 3/32	2 7/16	3/8	2 5/16	60	5/8	3	5/16-18	2.5
HB1	B	3 7/8	0.292	2.623	3.750	1 7/16	3 1/8	1/2	1 5/16	60	13/16	3	5/16-18	2.3
HB2	B	4 1/2	0.709	2.623	4.375	1 7/16	3 1/8	1/2	1 3/4	60	13/16	3	5/16-18	4.7
HQ1	Q1	4 1/2	0.709	2.875	4.375	1 9/16	3 3/8	1/2	1 3/4	60	7/8	3	3/8-16	4.4
HQC1	Q1	4 1/2	1.250	2.875	4.375	1 9/16	3 3/8	1/2	1 3/4	60	7/8	3	3/8-16	4.4
HQ2	Q2	4 1/2	1.606	2.875	4.375	1 9/16	3 3/8	1/2	2 3/4	60	7/8	3	3/8-16	6.9
HR1	R1	5 3/4	0.709	4.000	5.625	2 3/16	4 5/8	3/4	2	60	1 1/8	3	3/8-16	7.3
HR2	R2	5 3/4	1.606	4.000	5.625	2 3/16	4 5/8	3/4	4	60	1 1/8	3	3/8-16	15.4
HS1	S1	6 3/4	0.946	4.625	6.500	2 9/16	5 3/8	3/4	3 5/16	60	1 5/8	3	1/2-13	17.3
HS2	S2	6 3/4	2.963	4.625	6.500	2 9/16	5 3/8	3/4	5 11/16	60	1 5/8	3	1/2-13	30.4
HU0	U0	8 1/2	2.000	6.000	8.250	3 1/4	7	1 1/4	3 3/4	60	2	3	5/8-11	32.0
HU1	U1	8 1/2	2.963	6.000	8.250	3 1/4	7	1 1/4	5 5/8	60	1 3/4	3	5/8-11	44.6
HU2	U2	8 1/2	6.016	6.000	8.250	3 1/4	7	1 1/4	8 5/8	60	1 3/4	3	5/8-11	69.0
HW1	W1	12 1/2	2.963	8.500	12.250	4 9/16	10	1 1/4	6 3/8	22 1/2	1 3/4	4	3/4-10	130.0

Type "B" Steel Hubs

Part No.	Dimensions					Bore		Wt. Lbs.
	O.D.	A	C	P	X	Stock	Max.	
HB40	3"	0.281"	2.875"	27/32"	1 1/8"	1/2"	1 7/8"	2.3
HB50	3 1/4	0.344	3.125	1 1/32	1 3/8	5/8	2 1/4	3.0
HB60	4	0.469	3.875	1 1/32	1 1/2	5/8	2 3/8	5.0
HB80	5	0.563	4.875	1 1/2	2 1/16	3/4	3	11.1
HB100	5 1/4	0.688	5.125	2 1/16	2 3/4	1	3 1/4	16.3

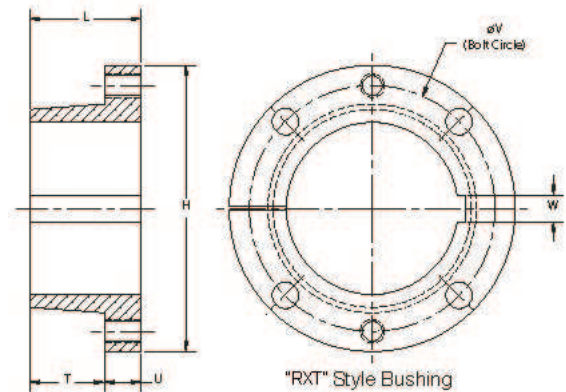
NOTE-"A" dimension is plate thickness of sprocket for chain indicated in part number. Other plates can be used by remachining "A" dimension.

Table No. 1

Bushing Part No.	Dimensions			Cap Screws		Wt. Lbs.
	L	U	H	No.	Size	
RXTB15	1 1/8	3/8	2 7/8	4	1/4X1	0.7
RXTB20	1 13/32	15/32	3 3/4	4	5/16X1 1/4	1.5
RXTB25	1 7/8	5/8	4 7/16	4	3/8X1 3/4	2.6
RXTB30	2 1/16	11/16	5 5/16	4	7/16X1 1/2	4.2
RXTB35	2 15/32	25/32	6 5/16	4	1/2X1 3/4	7.4
RXTB40	2 13/16	7/8	7 1/8	4	9/16X2	10.5
RXTB45	3 5/16	15/16	8	4	5/8X2 1/4	14.8
RXTB50	3 3/4	1	10 1/8	4	3/4X2 1/2	27.8
RXTB60	4 1/8	1 1/8	11 15/16	4	7/8X2 1/2	42.8
RXTB70	4 11/16	1 5/16	13 15/16	4	1X3	66.3
RXTB80	5 1/8	1 3/8	15 5/8	4	1 1/8X3 1/2	85.7
RXTB100	6 3/16	1 9/16	17 15/16	6	1 1/8X3 1/2	146
RXTB120	7 1/16	1 3/4	20 5/8	8	1 1/8X3 1/2	216

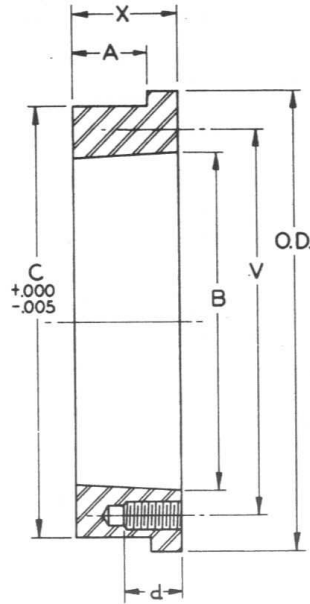
Table No. 2

Bushing Part No.	Stock Bores	Keyseat	Key Supplied
RXTB15	5/8, 3/4, 7/8, 1, 1 1/8, 1 3/16, 1 1/4, 1 7/16, 1 1/2	3/16X3/32 1/4X1/8 3/8X1/8	none none 3/8X5/16X1 1/8
RXTB20	3/4 1, 1 3/16, 1 1/4 1 7/16, 1 1/2, 1 11/16 1 15/16, 2	3/16X3/32 1/4X1/8 3/8X3/16 1/2X3/16	none none none 1/2X7/16X1 3/8
RXTB25	1, 1 3/16, 1 1/4 1 7/16, 1 1/2, 1 11/16, 1 3/4 1 15/16, 2, 2 3/16 2 7/16	1/4X1/8 3/8X3/16 1/2X1/4 5/8X1/8	none none none 5/8X7/16X1 3/4
RXTB30	1 7/16, 1 1/2, 1 11/16 1 15/16, 2 3/16 2 7/16, 2 11/16 2 15/16	3/8X3/16 1/2X1/4 5/8X5/16 3/4X3/16	none none none 3/4X9/16X2
RXTB35	1 15/16, 2 3/16 2 7/16, 2 11/16 2 15/16 3 7/16	1/2X1/4 5/8X5/16 3/4X3/8 7/8X5/16	none none none 7/8X3/4X2 1/2
RXTB40	2 7/16 2 15/16 3 7/16 3 15/16	5/8X5/16 3/4X3/8 7/8X7/16 1X3/8	none none none 1X7/8X2 3/4
RXTB45	3 7/16 3 15/16 4 7/16	7/8X7/16 1X1/2 1X3/8	none none 1X7/8X3 1/4
RXTB50	3 15/16, 4 7/16 4 15/16	1X1/2 1 1/4X5/8	none none
RXTB60	5 7/16, 5 1/2 5 15/16, 6	1 1/4x5/8 1 1/2x3/4	none none
RXTB70	6 7/16, 6 1/2 6 15/16, 7	1 1/2X3/4 1 3/4X3/4	none none
RXTB80	7 1/2 7 15/16, 8	1 3/4X3/4 2X3/4	none none
RXTB100	8 1/2, 9 9 7/16, 9 1/2, 10	2X3/4 2 1/2X7/8	none none
RXTB120	10 1/2, 11 11 1/2, 12	2 1/2X7/8 3X1	none none



RECOMMENDED CAP SCREW TORQUE

RXT Size	Wrench Torque (in.)	Cap Screw Size
15	95	1/4,
20	200	5/16
25	350	3/8
30	550	7/16
35	840	1/2
40	1200	9/16
45	1680	5/8
50	3000	3/4
60	4800	7/8
70	7200	1
80	9000	1 1/8
100	9000	1 1/8
120	9000	1 1/8



"RXT" Style Hub

Table No. 1

Part No	For Bushing	Dimensions						Tapped Holes		Wt. Lbs.
		O.D.	A	B	C	V	x	No.	Size	
RXTH15	RXTB15	3 1/4"	7/16"	2.000"	2 7/8"	2 7/16"	5/8"	4	1/4"-20NC	0.7
RXTH20	RXTB20	4 1/8	9/16	2.688	3 13/16	3 3/16	13/16	4	5/16-18NC	1.5
RXTH25	RXTB25	4 3/4	13/16	3.188	4 3/8	3 3/4	1 1/8	4	3/8-16NS	2.6
RXTH30	RXTB30	6	7/8	3.875	5 3/4	4 9/16	1 1/4	4	7/16-14NC	4.1
RXTH35	RXTB35	6 5/8	1 1/16	4.688	6.345	5 7/16	1 1/2	4	1/2-13NC	6.6
RXTH40	RXTB40	7 5/8	1 1/4	5.313	7 1/4	6 1/8	1 3/4	4	9/16-12NC	10.7
RXTH45	RXTB45	8 3/8	1 1/2	5.938	8	6 7/8	2 1/8	4	5/8-11NC	15.4
RXTH50	RXTB50	10	1 3/4	7.250	9 9/16	8 5/16	2 1/2	4	3/4-10NC	24.9
RXTH60	RXTB60	11 3/4	1 15/16	8.625	11 1/4	9 7/8	2 3/4	4	7/8-9NC	36.4
RXTH70	RXTB70	13 11/16	2 3/16	10.000	13 3/16	11 9/16	3 1/8	4	1-8NC	57.7
RXTH80	RXTB80	15	2 7/16	11.125	14 5/8	12 7/8	3 7/16	4	1 1/8-7NC	75.6
RXTH100	RXTB100	18	3	13.688	17 1/2	15 9/16	4 1/8	6	1 1/8-7NC	122
RXTH120	RXTB120	21	3 1/2	16.188	20 1/2	18 3/16	4 13/16	8	1 1/8-7NC	189

Single Groove Sheaves for "4L" or "A" Belts

"3L" Belts may be used with These Sheaves as Indicated in Table Below



Table No.1 Stock Sizes—Finished Bore

PART NO.	DIAMETERS			Type	STOCK BORES MARKED "X"											DIMENSIONS				Wt. Lbs
	Outside	Datum "A"	Datum 3L"		1/2"	5/8"	3/4"	7/8"	15/16"	1"	1 1/8"	1 3/16"	1 1/4"	1 3/8"	1 7/16"	F	L	P	C	
▲AK17	1.75"	1.50"	1.16"	1	x	x	-	-	-	-	-	-	-	-	-	21/32"	15/16"	7/16"	5/32"	.2
▲AK20	2.00	1.80	1.46	1	x	x	x	-	-	-	-	-	-	-	-	21/32	15/16	7/16	5/32	.3
▲AK21	2.10	1.90	1.56	1	x	x	x	-	-	-	-	-	-	-	-	21/32	15/16	7/16	5/32	.4
▲AK22	2.20	2.00	1.66	1	x	x	x	-	-	-	-	-	-	-	-	21/32	15/16	7/16	5/32	.5
▲AK23	2.30	2.10	1.76	1	x	x	x	-	-	-	-	-	-	-	-	21/32	15/16	7/16	5/32	.5
▲AK25	2.50	2.30	1.96	2	x	x	x	-	-	-	-	-	-	-	-	21/32	15/16	7/16	5/32	.5
▲AK26	2.60	2.40	2.06	2	x	x	x	-	-	-	-	-	-	-	-	21/32	15/16	7/16	5/32	.5
▲AK27	2.70	2.50	2.16	2	x	x	x	-	-	-	-	-	-	-	-	21/32	15/16	7/16	5/32	.6
▲AK28	2.80	2.60	2.26	2	x	x	x	-	-	-	-	-	-	-	-	21/32	15/16	7/16	5/32	.7
▲AK30	3.05	2.80	2.46	2	x	x	x	x	-	-	-	-	-	-	-	21/32	15/16	7/16	5/32	.7
▲AK32	3.25	3.00	2.66	2	x	x	x	x	-	-	-	-	-	-	-	21/32	15/16	7/16	5/32	.7
▲AK34	3.45	3.20	2.86	2	x	x	x	x	-	-	-	-	-	-	-	21/32	15/16	7/16	5/32	.9
AK39	3.75	3.50	3.16	2	x	x	x	x	x	-	-	-	-	-	-	3/4	1 5/32	15/32	1/16	1.4
AK41	3.95	3.70	3.36	2	x	x	x	x	x	x	-	-	-	-	-	3/4	1 5/32	15/32	1/16	1.5
AK44	4.25	4.00	3.66	3	x	x	x	x	x	x	x	-	-	-	-	3/4	1 5/32	15/32	1/16	1.5
AK46	4.45	4.20	3.86	3	x	x	x	x	x	x	x	-	-	-	-	3/4	1 5/32	15/32	1/16	1.5
AK49	4.75	4.50	4.16	3	x	x	x	x	x	x	x	-	-	-	-	3/4	1 5/32	15/32	1/16	1.7
AK51	4.95	4.70	4.36	3	x	x	x	x	x	x	x	-	-	-	-	3/4	1 5/32	15/32	1/16	1.7
AK54	5.25	5.00	4.66	3	x	x	x	x	x	x	x	x	-	-	-	3/4	1 5/32	15/32	1/16	1.8
AK56	5.45	5.20	4.86	3	x	x	x	x	x	x	x	x	-	-	-	3/4	1 5/32	15/32	1/16	1.9
AK59	5.75	5.50	5.16	3	x	x	x	x	x	x	x	x	-	-	-	3/4	1 5/32	15/32	1/16	2.0
AK61	5.95	5.70	5.36	3	x	x	x	x	x	x	x	x	-	-	-	3/4	1 5/32	15/32	1/16	2.1
AK64	6.25	6.00	5.66	3	x	x	x	x	x	x	x	x	-	-	-	3/4	1 5/32	15/32	1/16	2.2
AK66	6.45	6.20	5.86	3	-	x	x	-	-	x	x	-	-	-	-	3/4	1 5/32	15/32	1/16	2.3
AK69	6.75	6.50	6.16	3	-	-	x	-	-	x	x	-	-	-	-	3/4	1 15/32	23/32	0	3.5
AK71	6.95	6.70	6.36	3	-	x	x	-	-	x	x	-	-	-	-	3/4	1 15/32	23/32	0	3.8
▲AK74	7.25	7.00	6.66	3	x	x	x	-	-	x	x	x	-	-	-	3/4	1 15/32	23/32 ★	0 ★	3.4
▲AK79	7.75	7.50	7.16	3	-	-	x	-	-	x	x	-	-	-	-	3/4	1 15/32	23/32	0	4.0
▲AK84	8.25	8.00	7.66	3	x	x	x	-	-	x	x	-	-	-	-	3/4	1 15/32	23/32 ★	0 ★	3.8
▲AK89	8.75	8.50	8.16	3	-	-	x	-	-	x	x	-	-	-	-	3/4	1 15/32	23/32	0	4.3
▲AK94	9.25	9.00	8.66	3	x	x	x	-	-	x	x	-	-	-	-	3/4	1 15/32	23/32 ★	0 ★	4.5
▲AK99	9.75	9.50	9.16	3	-	-	x	-	-	x	x	-	-	-	-	3/4	1 15/32	23/32	0	5.3
▲AK10	10.25	10.00	9.66	3	-	-	x	-	-	-	x	x	-	-	-	3/4	1 15/32	23/32 ★	0 ★	5.1
▲AK10	10.75	10.50	10.16	3	-	-	x	-	-	-	x	x	-	-	-	3/4	1 15/32	23/32	0	5.8
▲AK11	11.25	11.00	10.66	3	-	-	x	-	-	-	x	x	-	-	-	3/4	1 15/32	23/32 ★	0 ★	5.6
▲AK12	12.25	12.00	11.66	3	-	-	x	-	-	-	x	x	-	-	-	3/4	1 15/32	23/32 ★	0 ★	6.5
AK134	13.25	13.00	12.66	3	-	-	x	-	-	-	x	x	-	-	-	3/4	1 15/32	23/32	0	7.5
AK144	14.25	14.00	13.66	3	-	-	x	-	-	-	x	x	-	-	-	3/4	1 15/32	23/32	0	8.5
AK154	15.25	15.00	14.66	3	-	-	x	-	-	-	x	x	-	-	-	3/4	1 15/32	23/32	0	9.8
AK184	18.25	18.00	17.66	3	-	-	x	-	-	-	x	x	-	-	-	3/4	1 15/32	23/32	0	12.1

★P=25/32" and C=1/16" for 1" Bore and Smaller

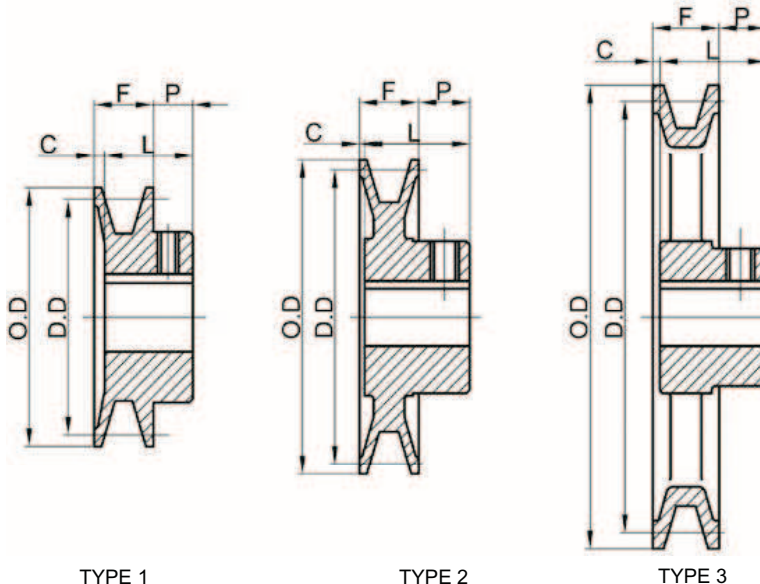
▲ NOTE—DO NOT USE THESE "AK" SHEAVES WITH BORES 1" AND UNDER WITH NOTCHED BELT RATINGS.

Standard Keyseats

Table No.2

Bore Range	Keyseat
1/2"	None
5/8" to 7/8"	3/16" x 3/32"
15/16" to 1 1/4"	1/4 x 1/8"
1 7/16"	3/8 x 3/16"

RBL "AK" Sheaves are accurately machined from fine grained cast iron, statically balanced, painted and individually packaged. They are furnished with Standard Keyseats and Hollow Head Setscrews.



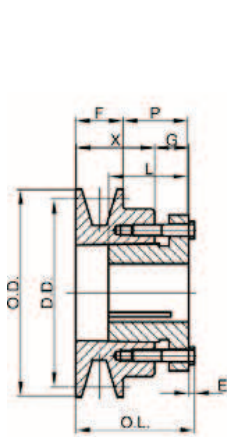
Single Groove Sheaves for "4L" or "A" Belts

"3L" Belts may be used with These Sheaves as Indicated in Table Below

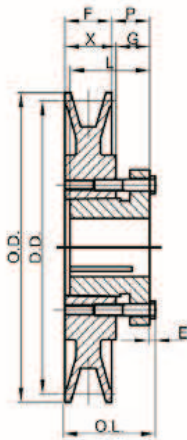


Table No.1 Stock Sizes—with split Taper Bushings

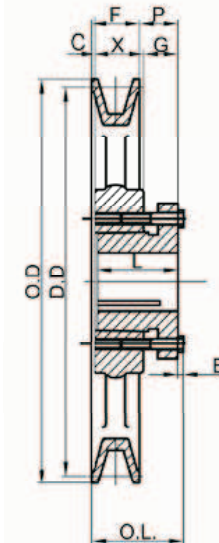
Part No.	DIAMETERS			Type	DIMENSIONS								Wt less Bush.
	O.D.	Datum "A"	Datum "3L"		O.L.	F	L	P	C	X	G	E	
AK30H	3.05"	2.80"	2.46"	1	1 13/16"	3/4"	1 1/4"	7/8"	—	1 3/16"	7/16"	3/16"	1.10
AK32H	3.25	3.00	2.66	1	1 13/16	3/4	1 1/4	7/8	—	1 3/16	7/16	3/16	1.20
AK34H	3.45	3.20	2.86	2	1 1/2	3/4	1 1/4	9/16	—	7/8	7/16	3/16	1.00
AK39H	3.75	3.50	3.16	2	1 1/2	3/4	1 1/4	9/16	—	7/8	7/16	3/16	1.40
AK41H	3.95	3.70	3.36	2	1 1/2	3/4	1 1/4	9/16	—	7/8	7/16	3/16	1.60
AK44H	4.25	4.00	3.66	2	1 1/2	3/4	1 1/4	9/16	—	7/8	7/16	3/16	1.90
AK46H	4.45	4.20	3.86	2	1 1/2	3/4	1 1/4	9/16	—	7/8	7/16	3/16	1.90
AK49H	4.75	4.50	4.16	2	1 1/2	3/4	1 1/4	9/16	—	7/8	7/16	3/16	2.10
AK51H	4.95	4.70	4.36	2	1 1/2	3/4	1 1/4	9/16	—	7/8	7/16	3/16	2.30
AK54H	5.25	5.00	4.66	2	1 1/2	3/4	1 1/4	9/16	—	7/8	7/16	3/16	2.00
AK56H	5.45	5.20	4.86	2	1 1/2	3/4	1 1/4	9/16	—	7/8	7/16	3/16	2.30
AK59H	5.75	5.50	5.16	2	1 1/2	3/4	1 1/4	9/16	—	7/8	7/16	3/16	2.40
AK61H	5.95	5.70	5.36	3	1 1/2	3/4	1 1/4	9/16	0	7/8	7/16	3/16	2.50
AK64H	6.25	6.00	5.66	3	1 1/2	3/4	1 1/4	9/16	0	7/8	7/16	3/16	2.70
AK66H	6.45	6.20	5.86	3	1 1/2	3/4	1 1/4	9/16	0	7/8	7/16	3/16	2.80
AK69H	6.75	6.50	6.16	3	1 1/2	3/4	1 1/4	9/16	0	7/8	7/16	3/16	3.20
AK71H	6.95	6.70	6.36	3	1 1/2	3/4	1 1/4	9/16	0	7/8	7/16	3/16	3.10
AK74H	7.25	7.00	6.66	3	1 1/2	3/4	1 1/4	9/16	0	7/8	7/16	3/16	3.30
AK79H	7.75	7.50	7.16	3	1 1/2	3/4	1 1/4	9/16	0	7/8	7/16	3/16	3.50
AK84H	8.25	8.00	7.66	3	1 1/2	3/4	1 1/4	9/16	0	7/8	7/16	3/16	3.60
AK89H	8.75	8.50	8.16	3	1 1/2	3/4	1 1/4	9/16	0	7/8	7/16	3/16	4.00
AK94H	9.25	9.00	8.66	3	1 1/2	3/4	1 1/4	9/16	0	7/8	7/16	3/16	4.40
AK99H	9.75	9.50	9.16	3	1 1/2	3/4	1 1/4	9/16	0	7/8	7/16	3/16	4.70
AK104H	10.25	10.00	9.66	3	1 1/2	3/4	1 1/4	9/16	0	7/8	7/16	3/16	4.50
AK109H	10.75	10.50	10.16	3	1 1/2	3/4	1 1/4	9/16	0	7/8	7/16	3/16	5.10
AK114H	11.25	11.00	10.66	3	1 1/2	3/4	1 1/4	9/16	0	7/8	7/16	3/16	5.50
AK124H	12.25	12.00	11.66	3	1 1/2	3/4	1 1/4	9/16	0	7/8	7/16	3/16	6.10
AK134H	13.25	13.00	12.66	3	1 1/2	3/4	1 1/4	9/16	0	7/8	7/16	3/16	7.40
AK144H	14.25	14.00	13.66	3	1 1/2	3/4	1 1/4	9/16	0	7/8	7/16	3/16	7.80
AK154H	15.25	15.00	14.66	3	1 1/2	3/4	1 1/4	9/16	0	7/8	7/16	3/16	8.80
AK184H	18.25	18.00	17.66	3	1 1/2	3/4	1 1/4	9/16	0	7/8	7/16	3/16	11.30



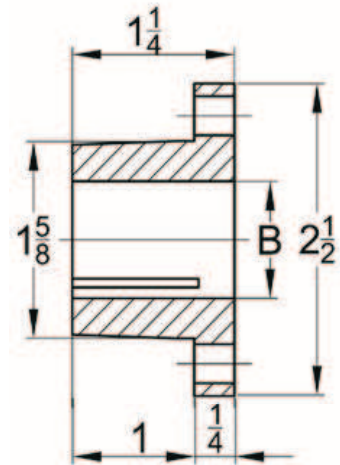
TYPE 1



TYPE 2



TYPE 3



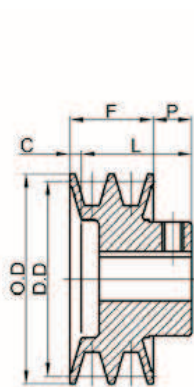
Two Groove Sheaves for "4L" or "A" Belts

"3L" Belts may be used with These Sheaves as Indicated in Table

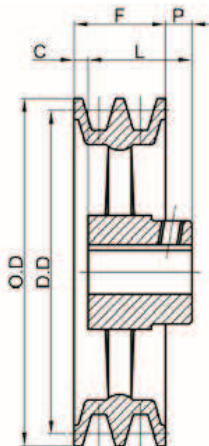


Table No.1 Stock Sizes—Finished Bore

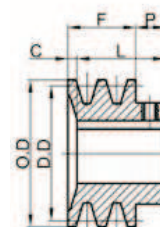
Part No.	DIAMETERS			Type	STOCK BORES MARKED "X"										DIMENSIONS				Wt Lbs
	Out-side	Datum "A"	Datum "3L"		1/2"	5/8"	3/4"	7/8"	15/16"	1"	1 1/8"	1 3/16"	1 3/8"	1 7/16"	F	L	P	C	
2AK20	2.00"	1.80"	1.46"	1	x	x	x	—	—	—	—	—	—	1 3/8"	1 21/32"	15/32"	3/16"	.8	
2AK21	2.15	1.90	1.56	1	x	x	x	—	—	—	—	—	—	1 3/8	1 21/32	15/32	3/16	.9	
2AK22	2.25	2.00	1.66	1	x	x	x	x	—	—	—	—	—	1 3/8	1 21/32	15/32	3/16	.9	
2AK23	2.35	2.10	1.76	1	—	x	x	x	—	x	—	—	—	1 3/8	1 21/32	15/32	3/16	1.1	
2AK25	2.55	2.30	1.96	1	—	x	x	x	—	x	—	—	—	1 3/8	1 21/32	15/32	3/16	1.3	
2AK26	2.65	2.40	2.06	1	—	x	x	x	—	x	—	—	—	1 3/8	1 21/32	15/32	3/16	1.4	
2AK27	2.75	2.50	2.16	1	—	x	x	x	—	x	—	—	—	1 3/8	1 21/32	15/32	3/16	1.5	
2AK28	2.85	2.60	2.26	1	—	x	x	x	—	x	—	—	—	1 3/8	1 21/32	15/32	3/16	1.8	
2AK30	3.05	2.80	2.46	1	x	x	x	x	—	x	x	—	—	1 3/8	1 21/32	15/32	3/16	1.8	
2AK32	3.25	3.00	2.66	1	—	x	x	x	—	x	x	—	—	1 3/8	1 21/32	15/32	3/16	2.1	
2AK34	3.45	3.20	2.86	1	—	x	x	x	—	x	x	—	—	1 3/8	1 21/32	15/32	3/16	2.3	
2AK39	3.75	3.50	3.16	2	—	x	x	x	—	x	x	—	—	1 3/8	1 11/32	15/32	1/2	2.6	
2AK41	3.95	3.70	3.36	2	—	x	x	x	—	x	x	—	—	1 3/8	1 11/32	15/32	1/2	2.9	
2AK44	4.25	4.00	3.66	2	—	x	x	x	—	x	x	—	—	1 3/8	1 11/32	15/32	1/2	3.0	
2AK46	4.45	4.20	3.86	2	—	—	—	x	—	x	x	—	—	1 3/8	1 11/32	15/32	1/2	3.1	
2AK49	4.75	4.50	4.16	2	—	—	x	x	—	x	x	—	x	1 3/8	1 11/32	15/32	1/2	3.6	
2AK51	4.95	4.70	4.36	2	—	—	x	x	—	x	x	—	x	1 3/8	1 11/32	15/32	1/2	3.8	
2AK54	5.25	5.00	4.66	3	—	x	x	x	—	x	x	—	x	1 3/8	1 11/32	15/32	1/2	3.3	
2AK56	5.45	5.20	4.86	3	—	x	x	—	—	x	x	—	x	1 3/8	1 11/32	15/32	1/2	3.4	
2AK59	5.75	5.50	5.16	3	—	—	—	—	—	x	x	—	x	1 3/8	1 11/32	15/32	1/2	3.5	
2AK61	5.95	5.70	5.36	3	—	—	x	x	—	x	x	—	x	1 3/8	1 11/32	15/32	1/2	3.6	
2AK64	6.25	6.00	5.66	3	—	—	x	—	—	x	x	x	x	1 3/8	1 19/32	11/32	1/8	4.8	
2AK74	7.25	7.00	6.66	3	—	—	x	—	—	x	x	x	x	1 3/8	1 19/32	11/32	1/8	5.6	
2AK84	8.25	8.00	7.66	3	—	—	x	—	x	x	x	x	x	1 3/8	1 19/32	11/32	1/8	6.4	
2AK94	9.25	9.00	8.66	3	—	—	x	—	x	x	x	x	x	1 3/8	1 19/32	11/32	1/8	7.3	
2AK104	10.25	10.00	9.66	3	—	—	x	—	x	x	—	—	x	1 3/8	1 19/32	11/32	1/8	8.1	
2AK114	11.25	11.00	10.66	3	—	—	x	—	x	—	x	x	x	1 3/8	1 19/32	11/32	1/8	9.0	
2AK124	12.25	12.00	11.66	3	—	—	x	—	x	—	x	—	x	1 3/8	1 19/32	11/32	1/8	9.8	
2AK134	13.25	13.00	12.66	3	—	—	—	—	—	—	x	—	x	1 3/8	1 19/32	11/32	1/8	12.3	
2AK144	14.25	14.00	13.66	3	—	—	—	—	—	x	—	—	x	1 3/8	1 19/32	11/32	1/8	13.9	
2AK154	15.25	15.00	14.66	3	—	—	—	—	—	—	x	—	x	1 3/8	1 19/32	11/32	1/8	14.3	
2AK184	18.25	18.00	17.66	3	—	—	—	—	—	—	x	—	x	1 3/8	1 19/32	11/32	1/8	17.4	



TYPE 2



TYPE 3



TYPE 1

Standard Keyseats Table No.2

Bore Range	Keyseat
1/2"	None
5/8 to 7/8	3/16 x 3/32 "
15/16 to 1 1/4	1/4 x 1/8
1 7/16	3/8 x 3/16

Two Groove Sheaves for "4L" or "A" Belts

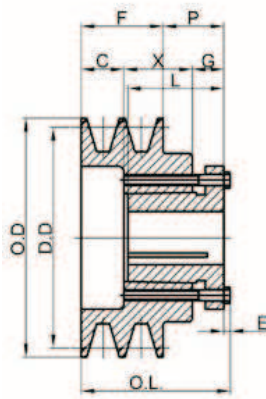
"3L" Belts may be used with These Sheaves as Indicated in Table Below



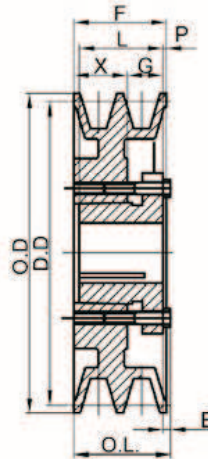
Table No.1

Stock Sizes—with split Taper Bushings

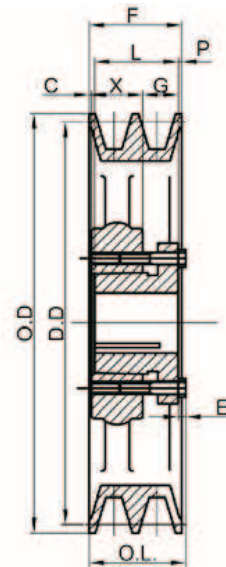
Part No.	DIAMETERS			Type	DIMENSIONS								Wt. Less Bush
	O.D.	Datum "A"	Datum "3L"		O.L.	F	L	P	C	X	G	E	
2AK30H	3.05"	2.80"	2.46"	1	2 7/16"	1 3/8	1 1/4"	7/8"	15/16"	7/8"	7/16"	3/16"	1.40
2AK32H	3.25	3.00	2.66	1	2 7/16	1 3/8	1 1/4	7/8	15/16	7/8	7/16	3/16	1.70
2AK34H	3.45	3.20	2.86	1	2	1 3/8	1 1/4	7/16	1/2	7/8	7/16	3/16	1.80
2AK39H	3.75	3.50	3.16	1	2	1 3/8	1 1/4	7/16	1/2	7/8	7/16	3/16	1.80
2AK41H	3.95	3.70	3.36	2	1 1/2	1 3/8	1 1/4	1/16	—	7/8	7/16	3/16	1.90
2AK44H	4.25	4.00	3.66	2	1 1/2	1 3/8	1 1/4	1/16	—	7/8	7/16	3/16	2.40
2AK46H	4.45	4.20	3.86	2	1 1/2	1 3/8	1 1/4	1/16	—	7/8	7/16	3/16	2.50
2AK49H	4.75	4.50	4.16	2	1 1/2	1 3/8	1 1/4	1/16	—	7/8	7/16	3/16	3.10
2AK51H	4.95	4.70	4.36	2	1 1/2	1 3/8	1 1/4	1/16	—	7/8	7/16	3/16	3.20
2AK54H	5.25	5.00	4.66	2	1 1/2	1 3/8	1 1/4	1/16	—	7/8	7/16	3/16	3.40
2AK56H	5.45	5.20	4.86	2	1 1/2	1 3/8	1 1/4	1/16	—	7/8	7/16	3/16	3.60
2AK59H	5.75	5.50	5.16	3	1 1/2	1 3/8	1 1/4	1/16	0	7/8	7/16	3/16	3.40
2AK61H	5.95	5.70	5.36	3	1 1/2	1 3/8	1 1/4	1/16	0	7/8	7/16	3/16	3.30
2AK64H	6.25	6.00	5.66	3	1 1/2	1 3/8	1 1/4	1/16	0	7/8	7/16	3/16	3.90
2AK74H	7.25	7.00	6.66	3	1 1/2	1 3/8	1 1/4	1/16	0	7/8	7/16	3/16	4.90
2AK84H	8.25	8.00	7.66	3	1 1/2	1 3/8	1 1/4	1/16	0	7/8	7/16	3/16	5.80
2AK94H	9.25	9.00	8.66	3	1 1/2	1 3/8	1 1/4	1/16	0	7/8	7/16	3/16	6.10
2AK104H	10.25	10.00	9.66	3	1 1/2	1 3/8	1 1/4	1/16	0	7/8	7/16	3/16	7.70
2AK114H	11.25	11.00	10.66	3	1 1/2	1 3/8	1 1/4	1/16	0	7/8	7/16	3/16	8.50
2AK124H	12.25	12.00	11.66	3	1 1/2	1 3/8	1 1/4	1/16	0	7/8	7/16	3/16	9.50
2AK134H	13.25	13.00	12.66	3	1 1/2	1 3/8	1 1/4	1/16	0	7/8	7/16	3/16	11.40
2AK144H	14.25	14.00	13.66	3	1 1/2	1 3/8	1 1/4	1/16	0	7/8	7/16	3/16	11.90
2AK154H	15.25	15.00	14.66	3	1 1/2	1 3/8	1 1/4	1/16	0	7/8	7/16	3/16	13.30
2AK184H	18.25	18.00	17.66	3	1 1/2	1 3/8	1 1/4	1/16	0	7/8	7/16	3/16	16.80



TYPE 1



TYPE 2



TYPE 3

Single Groove Sheaves for "4L" or "A" Belts and "5L" or "B" Belts

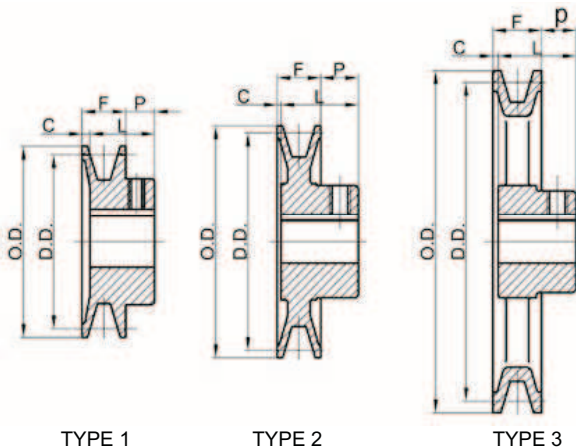


Table No.1 Stock Sizes—Finished Bore

Part No.	DIAMETERS			Type	STOCK BORES MARKED "X"											DIMENSIONS				Wt. Lbs.
	Out -side	Datum "A"	Datum "B"		1/2"	5/8"	3/4"	7/8"	15/16"	1"	1 1/8"	1 3/16"	1 1/4"	1 3/8"	1 7/16"	F	L	P	C	
▲BK24	2.40"	1.80"	2.20"	1	x	x	x	—	—	—	—	—	—	—	13/16	1 1/16"	13/32"	5/32"	.4	
▲BK25	2.50	1.90	2.30	1	x	x	x	—	—	—	—	—	—	—	13/16	1 1/16	13/32	5/32	.5	
▲BK26	2.60	2.00	2.40	1	x	x	x	x	—	—	—	—	—	—	13/16	1 1/16	13/32	5/32	.6	
▲BK27	2.70	2.10	2.50	2	x	x	x	x	—	—	—	—	—	—	13/16	1 1/16	13/32	5/32	.6	
▲BK28	2.95	2.20	2.60	2	x	x	x	x	—	—	—	—	—	—	13/16	1 1/16	13/32	5/32	.8	
▲BK30	3.15	2.40	2.80	2	x	x	x	x	—	—	—	—	—	—	13/16	1 1/16	13/32	5/32	.8	
▲BK32	3.35	2.60	3.00	2	x	x	x	x	—	—	—	—	—	—	13/16	1 1/16	13/32	5/32	.8	
BK34	3.55	2.80	3.20	2	x	x	x	x	—	x	x	—	—	—	7/8	1 5/32	13/32	1/8	1.3	
BK36	3.75	3.00	3.40	2	x	x	x	x	—	x	x	—	—	—	7/8	1 5/32	13/32	1/8	1.5	
BK40	3.95	3.20	3.60	2	x	x	x	x	—	x	x	—	—	—	7/8	1 5/32	13/32	1/8	1.5	
BK45	4.25	3.50	3.90	2	x	x	x	x	—	x	x	—	—	—	7/8	1 5/32	13/32	1/8	1.8	
BK47	4.45	3.70	4.10	2	x	x	x	x	—	x	x	—	—	—	7/8	1 5/32	13/32	1/8	1.9	
BK50	4.75	4.00	4.40	3	x	x	x	x	x	x	x	—	—	—	7/8	1 5/32	13/32	1/8	2.0	
BK52	4.95	4.20	4.60	3	x	x	x	x	—	x	x	—	—	—	7/8	1 5/32	13/32	1/8	2.0	
BK55	5.25	4.50	4.90	3	x	x	x	x	—	x	x	x	—	—	7/8	1 5/32	13/32	1/8	2.2	
BK57	5.45	4.70	5.10	3	—	x	x	x	x	x	x	—	—	—	7/8	1 5/32	13/32	1/8	2.3	
BK60	5.75	5.00	5.40	3	x	x	x	x	—	x	x	x	—	—	7/8	1 5/32	13/32	1/8	2.3	
BK62	5.95	5.20	5.60	3	x	x	x	x	x	x	x	—	—	—	7/8	1 5/32	13/32	1/8	2.4	
BK65	6.25	5.50	5.90	3	—	x	x	—	—	x	x	—	—	—	7/8	1 5/32	13/32	1/8	2.7	
BK67	6.45	5.70	6.10	3	—	x	x	—	—	x	x	—	—	—	7/8	1 5/32	13/32	1/8	2.8	
BK70	6.75	6.00	6.40	3	—	x	x	—	x	x	x	x	—	x	7/8	1 15/32	21/32★	1/16★	3.3	
BK72	6.95	6.20	6.60	3	—	—	x	—	—	x	x	—	—	x	7/8	1 15/32	21/32	1/16	3.9	
BK75	7.25	6.50	6.90	3	—	—	x	—	—	x	x	—	—	x	7/8	1 15/32	21/32	1/16	3.9	
BK77	7.45	6.70	7.10	3	—	—	x	—	—	x	x	—	—	x	7/8	1 15/32	21/32	1/16	4.1	
BK80	7.75	7.00	7.40	3	—	x	x	x	—	x	x	x	—	x	7/8	1 15/32	21/32	1/16	4.4	
BK85	8.25	7.50	7.90	3	—	—	x	—	—	x	x	—	—	x	7/8	1 15/32	21/32	1/16	5.0	
BK90	8.75	8.00	8.40	3	—	—	x	x	x	x	x	x	—	x	7/8	1 15/32	21/32	1/16	5.0	
BK95	9.25	8.50	8.90	3	—	—	x	—	—	x	x	—	—	x	7/8	1 15/32	21/32	1/16	5.4	
BK100	9.75	9.00	9.40	3	—	—	x	x	x	x	x	x	—	x	7/8	1 15/32	21/32	1/16	5.6	
BK105	10.25	9.50	9.90	3	—	—	—	—	—	x	—	—	—	x	7/8	1 15/32	21/32	1/16	5.8	
BK110	10.75	10.00	10.40	3	—	—	x	—	—	x	x	x	—	x	7/8	1 15/32	21/32	1/16	6.4	
BK115	11.25	10.50	10.90	3	—	—	—	—	—	x	—	—	x	x	7/8	1 15/32	21/32	1/16	6.9	
BK120	11.75	11.00	11.40	3	—	—	x	—	—	x	—	x	x	x	7/8	1 15/32	21/32	1/16	7.4	
BK130	12.75	12.00	12.40	3	—	—	x	—	—	x	x	x	—	x	7/8	1 15/32	21/32	1/16	8.4	
BK140	13.75	13.00	13.40	3	—	—	x	—	—	x	—	—	—	x	7/8	1 15/32	21/32	1/16	9.4	
BK160	15.75	15.00	15.40	3	—	—	—	—	—	x	x	x	—	x	7/8	1 15/32	21/32	1/16	11.4	
BK190	18.75	18.00	18.40	3	—	—	—	—	—	x	—	—	—	x	7/8	1 15/32	21/32	1/16	13.4	

★P=13/32" and C=1/8" for 1" Bore and Smaller

▲NOTE—DO NOT USE THESE "BK" SHEAVES WITH "B" NOTCHED BELT RATINGS.



◆ ◆
HOLLOW HEAD SETSCREWS
 ◆ ◆
STATICALLY BALANCED
 ◆ ◆

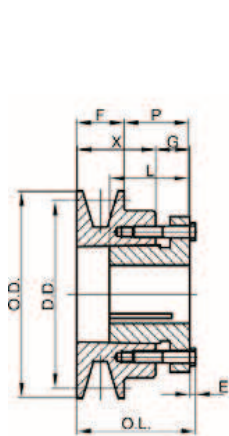
Standard Keyseats
 Table No.2

Bore Range	Keyseat
1/2"	None
5/8 to 7/8	3/16'x3/32'
15/16 to 1 1/4	1/4x1/8
1 7/16	3/8x3/16

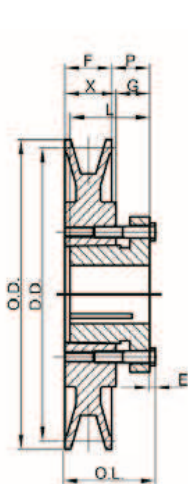
Single Groove Sheaves for "4L" or "A" Belts and "5L" or "B" Belts

Table No.1 Stock Sizes—Finished Bore

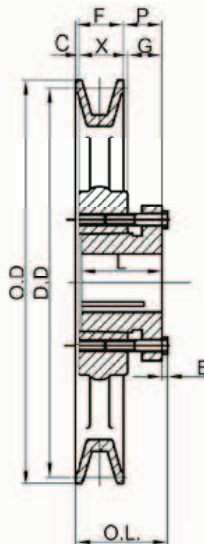
Part No.	DIAMETERS			Type	DIMENSIONS								Wt. Less Bus
	O.D.	Datum "A"	Datum "B"		O.L.	F	L	P	C	X	G	E	
BK30H	3.15"	2.40"	2.80"	1	1 15/16"	7/8"	1 1/4"	7/8"	—	1 5/16"	7/16"	3/16"	1.2
BK32H	3.35	2.60	3.00	1	1 15/16	7/8	1 1/4	7/8	—	1 5/16	7/16	3/16	1.40
BK34H	3.55	2.80	3.20	1	1 15/16	7/8	1 1/4	7/8	—	1 5/16	7/16	3/16	1.60
BK36H	3.75	3.00	3.40	2	1 1/2	7/8	1 1/4	7/16	—	7/8"	7/16	3/16	1.20
BK40H	3.95	3.20	3.60	2	1 1/2	7/8	1 1/4	7/16	—	7/8	7/16	3/16	1.40
BK45H	4.25	3.50	3.90	2	1 1/2	7/8	1 1/4	7/16	—	7/8	7/16	3/16	1.80
BK47H	4.45	3.70	4.10	2	1 1/2	7/8	1 1/4	7/16	—	7/8	7/16	3/16	2.20
BK50H	4.75	4.00	4.40	2	1 1/2	7/8	1 1/4	7/16	—	7/8	7/16	3/16	2.00
BK52H	4.95	4.20	4.60	2	1 1/2	7/8	1 1/4	7/16	—	7/8	7/16	3/16	2.10
BK55H	5.25	4.50	4.90	2	1 1/2	7/8	1 1/4	7/16	—	7/8	7/16	3/16	2.70
BK57H	5.45	4.70	5.10	2	1 1/2	7/8	1 1/4	7/16	—	7/8	7/16	3/16	2.70
BK60H	5.75	5.00	5.40	2	1 1/2	7/8	1 1/4	7/16	—	7/8	7/16	3/16	2.50
BK62H	5.95	5.20	5.60	2	1 1/2	7/8	1 1/4	7/16	—	7/8	7/16	3/16	2.60
BK65H	6.25	5.50	5.90	2	1 1/2	7/8	1 1/4	7/16	—	7/8	7/16	3/16	2.80
BK67H	6.45	5.70	6.10	2	1 1/2	7/8	1 1/4	7/16	—	7/8	7/16	3/16	2.90
BK70H	6.75	6.00	6.40	3	1 9/16	7/8	1 1/4	1/2	1/16"	7/8	7/16	3/16	2.80
BK72H	6.95	6.20	6.60	3	1 9/16	7/8	1 1/4	1/2	1/16"	7/8	7/16	3/16	3.10
BK75H	7.25	6.50	6.90	3	1 9/16	7/8	1 1/4	1/2	1/16"	7/8	7/16	3/16	3.30
BK77H	7.45	6.70	7.10	3	1 9/16	7/8	1 1/4	1/2	1/16"	7/8	7/16	3/16	3.80
BK80H	7.75	7.00	7.40	3	1 9/16	7/8	1 1/4	1/2	1/16"	7/8	7/16	3/16	3.40
BK85H	8.25	7.50	7.90	3	1 9/16	7/8	1 1/4	1/2	1/16"	7/8	7/16	3/16	3.80
BK90H	8.75	8.00	8.40	3	1 9/16	7/8	1 1/4	1/2	1/16"	7/8	7/16	3/16	4.30
BK95H	9.25	8.50	8.90	3	1 9/16	7/8	1 1/4	1/2	1/16"	7/8	7/16	3/16	5.00
BK100H	9.75	9.00	9.40	3	1 9/16	7/8	1 1/4	1/2	1/16"	7/8	7/16	3/16	5.20
BK105H	10.25	9.50	9.90	3	1 9/16	7/8	1 1/4	1/2	1/16"	7/8	7/16	3/16	5.50
BK110H	10.75	10.00	10.40	3	1 9/16	7/8	1 1/4	1/2	1/16"	7/8	7/16	3/16	6.00
BK115H	11.25	10.50	10.90	3	1 9/16	7/8	1 1/4	1/2	1/16"	7/8	7/16	3/16	6.40
BK120H	11.75	11.00	11.40	3	1 9/16	7/8	1 1/4	1/2	1/16"	7/8	7/16	3/16	6.90
BK130H	12.75	12.00	12.40	3	1 9/16	7/8	1 1/4	1/2	1/16"	7/8	7/16	3/16	6.90
BK140H	13.75	13.00	13.40	3	1 9/16	7/8	1 1/4	1/2	1/16"	7/8	7/16	3/16	8.50
BK150H	14.75	14.00	14.40	3	1 9/16	7/8	1 1/4	1/2	1/16"	7/8	7/16	3/16	9.50
BK160H	15.75	15.00	15.40	3	1 9/16	7/8	1 1/4	1/2	1/16"	7/8	7/16	3/16	9.80
BK190H	18.75	18.00	18.40	3	1 9/16	7/8	1 1/4	1/2	1/16"	7/8	7/16	3/16	12.80



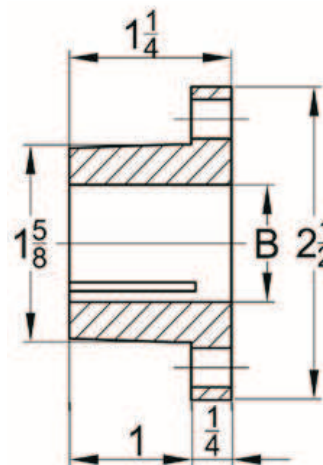
TYPE 1



TYPE 2



TYPE 3



Two Groove Sheaves for "4L" or "A" Belts and "5L" or "B" Belts



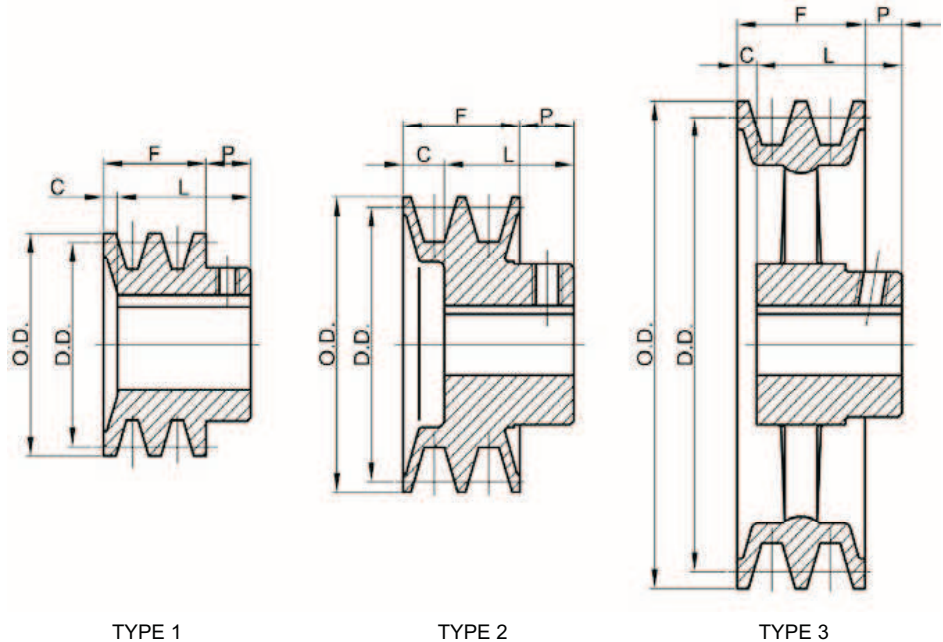
Table No.1 Stock Sizes—Finished Bore

Part No.	DIAMETERS			Type	STOCK BORES MARKED "X"									DIMENSIONS				Wt. Lbs.
	Out -side	Datum "A"	Datum "B"		1/2"	5/8"	3/4"	7/8"	1"	1 1/8"	1 3/16"	1 3/8"	1 7/16"	F	L	P	C	
2BK25	2.50"	1.90"	2.30"	1	x	x	x	x	—	—	—	—	—	1 3/4"	1 31/3	15/32"	1/4"	1.3
2BK27	2.70	2.10	2.50	1	x	x	x	x	x	—	—	—	—	1 3/4	1 31/3	15/32	1/4	1.6
2BK28	2.95	2.20	2.60	1	x	x	x	x	x	x	—	—	—	1 3/4	1 31/3	15/32	1/4	1.9
2BK30	3.15	2.40	2.80	1	x	x	x	x	x	x	—	—	—	1 3/4	1 31/3	15/32	1/4	2.3
2BK32	3.35	2.60	3.00	1	—	x	—	x	x	x	—	—	—	1 3/4	1 31/3	15/32	1/4	2.6
2BK34	3.55	2.80	3.20	1	—	x	x	x	x	x	—	—	—	1 3/4	1 31/3	15/32	1/4	2.8
2BK36	3.75	3.00	3.40	1	—	—	x	x	x	x	—	x	—	1 3/4	1 31/3	15/32	1/4	3.3
2BK40	3.95	3.20	3.60	2	—	x	x	x	x	x	—	—	—	1 3/4	1 15/3	15/32	3/4	3.3
2BK45	4.25	3.50	3.90	2	—	—	—	—	x	x	—	x	—	1 3/4	1 15/3	15/32	3/4	3.3
2BK47	4.45	3.70	4.10	2	—	—	—	x	x	x	—	—	—	1 3/4	1 15/3	15/32	3/4	3.7
2BK50	4.75	4.00	4.40	2	—	—	x	—	x	x	—	x	—	1 3/4	1 15/3	15/32	3/4	4.1
2BK52	4.95	4.20	4.60	2	—	—	—	x	x	x	—	x	—	1 3/4	1 15/3	15/32	3/4	4.5
2BK55	5.25	4.50	4.90	2	—	—	—	—	—	x	—	x	—	1 3/4	1 15/3	15/32	3/4	4.5
2BK57	5.45	4.70	5.10	2	—	—	—	—	x	x	—	x	—	1 3/4	1 15/3	15/32	3/4	5.1
2BK60	5.75	5.00	5.40	3	—	—	x	x	x	x	—	x	—	1 3/4	1 15/3	15/32	3/4	4.9
2BK62	5.95	5.20	5.60	3	—	—	—	—	x	x	—	x	—	1 3/4	1 15/3	15/32	3/4	4.8
2BK65	6.25	5.50	5.90	3	—	—	—	—	x	x	—	x	—	1 3/4	1 15/3	15/32	3/4	5.0
2BK67	6.45	5.70	6.10	3	—	—	—	—	x	x	—	x	—	1 3/4	1 15/3	15/32	3/4	5.0
2BK70	6.75	6.00	6.40	3	—	—	x	—	x	x	—	x	x	1 3/4	1 19/3	11/32	1/2	6.6
2BK80	7.75	7.00	7.40	3	—	—	x	—	x	x	—	x	x	1 3/4	1 19/3	11/32	1/2	7.2
2BK90	8.75	8.00	8.40	3	—	—	x	—	x	x	—	x	x	1 3/4	1 19/3	11/32	1/2	8.4
2BK100	9.75	9.00	9.40	3	—	—	x	—	x	—	—	x	x	1 3/4	1 19/3	11/32	1/2	9.4
2BK110	10.75	10.00	10.40	3	—	—	—	—	x	—	—	x	—	1 3/4	1 19/3	11/32	1/2	10.4
2BK120	11.75	11.00	11.40	3	—	—	—	—	x	—	—	x	—	1 3/4	1 19/3	11/32	1/2	11.8
2BK130	12.75	12.00	12.40	3	—	—	—	—	x	—	—	x	—	1 3/4	1 19/3	11/32	1/2	14.9
2BK140	13.75	13.00	13.40	3	—	—	—	—	x	—	—	x	—	1 3/4	1 19/3	11/32	1/2	16.3
2BK160	15.75	15.00	15.40	3	—	—	—	—	x	—	—	x	—	1 3/4	1 19/3	11/32	1/2	18.0
2BK190	18.75	18.00	18.40	3	—	—	—	—	—	—	—	x	—	1 3/4	1 19/3	11/32	1/2	23.3

Standard Keyseats

Table No.2

Bore Range	Keyseat
1/2"	None
5/8 to 7/8	3/16 x 3/32 "
15/16 to 1 3/16	1/4 x 1/8
1 3/8	5/16 x 5/32
1 7/16	3/8 x 3/16



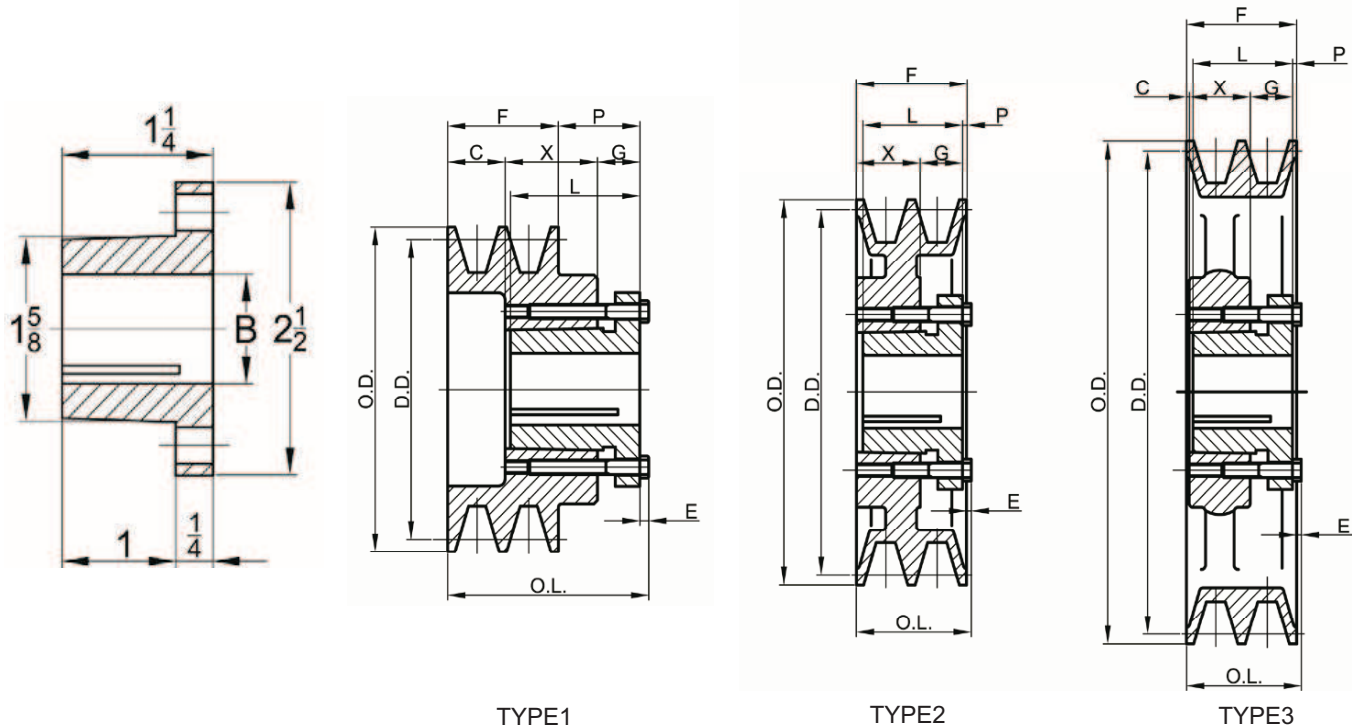
Two Groove Sheaves for "4L" or "A" Belts "4L" or "A" Belts



Table No.1

Stock Sizes—with Split Taper Bushings

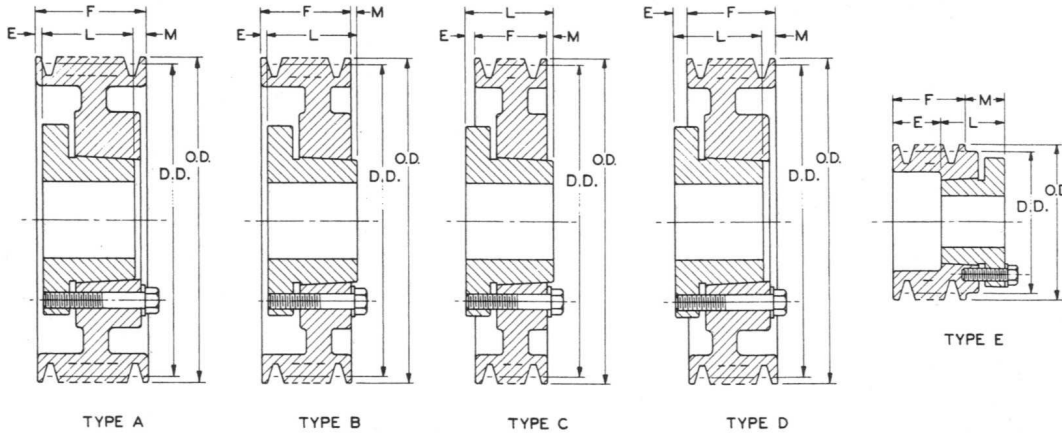
Part No.	DIAMETERS			Type	DIMENSIONS								Wt. Less Bus
	O.D.	Datum "A"	Datum "B"		O.L.	F	L	P	C	X	G	E	
2BK32H	3.35"	2.60"	3.00"	1	2 13/16"	1 3/4"	1 1/4"	7/8"	1 5/16"	7/8"	7/16"	3/16"	2.10
2BK34H	3.55	2.80	3.20	1	2 13/16	1 3/4	1 1/4	7/8	1 5/16	7/8	7/16	3/16	2.40
2BK36H	3.75	3.00	3.40	1	2 3/8	1 3/4	1 1/4	7/16	7/8	7/8	7/16	3/16	2.00
2BK40H	3.95	3.20	3.60	1	2 3/8	1 3/4	1 1/4	7/16	7/8	7/8	7/16	3/16	2.40
2BK45H	4.25	3.50	3.90	1	2 3/8	1 3/4	1 1/4	7/16	7/8	7/8	7/16	3/16	3.00
2BK47H	4.45	3.70	4.10	2	1 3/4	1 3/4	1 1/4	7/16	—	7/8	7/16	3/16	2.80
2BK50H	4.75	4.00	4.40	2	1 3/4	1 3/4	1 1/4	7/16	—	7/8	7/16	3/16	3.30
2BK52H	4.95	4.20	4.60	2	1 3/4	1 3/4	1 1/4	7/16	—	7/8	7/16	3/16	3.60
2BK55H	5.25	4.50	4.90	2	1 3/4	1 3/4	1 1/4	7/16	—	7/8	7/16	3/16	3.90
2BK57H	5.45	4.70	5.10	2	1 3/4	1 3/4	1 1/4	7/16	—	7/8	7/16	3/16	4.30
2BK60H	5.75	5.00	5.40	2	1 3/4	1 3/4	1 1/4	7/16	—	7/8	7/16	3/16	4.40
2BK62H	5.95	5.20	5.60	2	1 3/4	1 3/4	1 1/4	7/16	—	7/8	7/16	3/16	4.50
2BK65H	6.25	5.50	5.90	3	1 3/4	1 3/4	1 1/4	7/16	1/4	7/8	7/16	3/16	4.50
2BK67H	6.45	5.70	6.10	3	1 3/4	1 3/4	1 1/4	7/16	1/4	7/8	7/16	3/16	5.00
2BK70H	6.75	6.00	6.40	3	1 3/4	1 3/4	1 1/4	7/16	1/4	7/8	7/16	3/16	5.10
2BK80H	7.75	7.00	7.40	3	1 3/4	1 3/4	1 1/4	7/16	1/4	7/8	7/16	3/16	6.40
2BK90H	8.75	8.00	8.40	3	1 3/4	1 3/4	1 1/4	7/16	1/4	7/8	7/16	3/16	7.60
2BK100H	9.75	9.00	9.40	3	1 3/4	1 3/4	1 1/4	7/16	1/4	7/8	7/16	3/16	8.40
2BK110H	10.75	10.00	10.40	3	1 3/4	1 3/4	1 1/4	7/16	1/4	7/8	7/16	3/16	9.30
2BK120H	11.75	11.00	11.40	3	1 3/4	1 3/4	1 1/4	7/16	1/4	7/8	7/16	3/16	11.00
2BK130H	12.75	12.00	12.40	3	1 3/4	1 3/4	1 1/4	7/16	1/4	7/8	7/16	3/16	13.10
2BK140H	13.75	13.00	13.40	3	1 3/4	1 3/4	1 1/4	7/16	1/4	7/8	7/16	3/16	14.80
2BK160H	15.75	15.00	15.40	3	1 3/4	1 3/4	1 1/4	7/16	1/4	7/8	7/16	3/16	17.50
2BK190H	18.75	18.00	18.40	3	1 3/4	1 3/4	1 1/4	7/16	1/4	7/8	7/16	3/16	21.50



TYPE1

TYPE2

TYPE3



Standard Keyseats

Table No.1

Bore Range	Keyseats
1/2"-9/16"	1/8"x1/16"
5/8-7/8	3/16x3/32
15/16-1 1/4	1/4x1/8
1 5/16-1 3/8	5/16x5/32
1 7/16-1 3/4	3/8x3/16
1 13/16-2 1/4	1/2x1/4
2 5/16-2 3/4	5/8x5/16
2 13/16-3 1/4	3/4x3/8
3 3/8-3 3/4	7/8x7/16

1 3/8" Bore Bushings also available with 3/8x3/16" Keyseats

Table No.2

Specifications

Part No.	Bushing	Bore Range	Typ	D.D. (Datum Diameter)		O.D.	E	L	M	Wt. Less Bush.
				"B" Belt	"A" Belt					

1 GROOVE, F = 7/8" (1B34SH-1B70SDS) F = 1" (1B74SDS-1B200SK)

1B34SH	SH	1/2" - 1 5/8"	E-Sol.	3.4"	3.0"	3.75"	7/32"	1 5/16"	21/32"	2.0
1B36SH	SH	1/2 - 1 5/8	D-Sol.	3.6	3.2	3.95	19/32	1 5/16	5/32	2.2
1B38SH	SH	1/2 - 1 5/8	D-Sol.	3.8	3.4	4.15	19/32	1 5/16	5/32	2.4
1B40SH	SH	1/2 - 1 5/8	C-Sol.	4.0	3.6	4.35	11/32	1 5/16	3/32	2.7
1B42SH	SH	1/2 - 1 5/8	C-Sol.	4.2	3.8	4.55	11/32	1 5/16	3/32	2.9
1B44SH	SH	1/2 - 1 5/8	C-Sol.	4.4	4.0	4.75	11/32	1 5/16	3/32	3.4
1B46SDS	SDS	1/2 - 2	C-Sol.	4.6	4.2	4.95	11/32	1 5/16	3/32	4.0
1B48SDS	SDS	1/2 - 2	C-Sol.	4.8	4.4	5.15	11/32	1 5/16	3/32	4.3
1B50SDS	SDS	1/2 - 2	C-Sol.	5.0	4.6	5.35	11/32	1 5/16	3/32	4.7
1B52SDS	SDS	1/2 - 2	C-Sol.	5.2	4.8	5.55	11/32	1 5/16	3/32	5.0
1B54SDS	SDS	1/2 - 2	C-Sol.	5.4	5.0	5.75	11/32	1 5/16	3/32	5.3
1B56SDS	SDS	1/2 - 2	C-Sol.	5.6	5.2	5.95	11/32	1 5/16	3/32	5.6
1B58SDS	SDS	1/2 - 2	C-Web	5.8	5.4	6.15	11/32	1 5/16	3/32	5.9
1B60SDS	SDS	1/2 - 2	C-Web	6.0	5.6	6.35	11/32	1 5/16	3/32	6.2
1B62SDS	SDS	1/2 - 2	C-Web	6.2	5.8	6.55	11/32	1 5/16	3/32	6.5
1B64SDS	SDS	1/2 - 2	C-Web	6.4	6.0	6.75	11/32	1 5/16	3/32	6.8
1B66SDS	SDS	1/2 - 2	C-Web	6.6	6.2	6.95	11/32	1 5/16	3/32	7.2
1B68SDS	SDS	1/2 - 2	C-Arm	6.8	6.4	7.15	11/32	1 5/16	3/32	7.5
1B70SDS	SDS	1/2 - 2	C-Arm	7.0	6.6	7.35	11/32	1 5/16	3/32	7.8
1B74SDS	SDS	1/2 - 2	D-Arm	7.4	7.0	7.75	17/32	1 5/16	7/32	8.8
1B80SDS	SDS	1/2 - 2	D-Arm	8.0	7.6	8.35	17/32	1 5/16	7/32	9.6
1B86SDS	SDS	1/2 - 2	D-Arm	8.6	8.2	8.95	17/32	1 5/16	7/32	10.0
1B94SDS	SDS	1/2 - 2	D-Arm	9.4	9.0	9.75	17/32	1 5/16	7/32	10.5
1B110SDS	SDS	1/2 - 2	D-Arm	11.0	10.6	11.35	17/32	1 5/16	7/32	11.0
1B124SDS	SDS	1/2 - 2	D-Arm	12.4	12.0	12.75	17/32	1 5/16	7/32	12.0
1B136SDS	SDS	1/2 - 2	D-Arm	13.6	13.2	13.95	17/32	1 5/16	7/32	14.0
1B154SK	SK	1/2 - 2 5/8	C-Arm	15.4	15.0	15.75	21/32	1 15/16	9/32	16.0
1B160SK	SK	1/2 - 2 5/8	C-Arm	16.0	15.6	16.35	21/32	1 15/16	9/32	16.6
1B184SK	SK	1/2 - 2 5/8	C-Arm	18.4	18.0	18.75	21/32	1 15/16	9/32	18.0
1B200SK	SK	1/2 - 2 5/8	C-Arm	20.0	19.6	20.35	21/32	1 15/16	9/32	20.0



Q-D Sheaves for "A" and "B" Belts

Table No.1 Specifications

Part No.	Bushing	Bore Range	Type	D.D.		O.D.	E	L	M	Wt.
				"B"Belts	"A" Belts					
2 GROOVES, F = 1 3/4"				3 GROOVES, F = 2 1/2"						
2B34SH	SH	1/2 - 1 5/8	E-Sol.	3.4	3.0	3.75	1 3/32	1 5/16	21/32	3.20
2B36SH	SH	1/2 - 1 5/8	D-Sol.	3.6	3.2	3.95	15/32	1 5/16	29/32	3.40
2B38SH	SH	1/2 - 1 5/8	D-Sol.	3.8	3.4	4.15	15/32	1 5/16	29/32	3.90
2B40SH	SH	1/2 - 1 5/8	A-Sol.	4.0	3.6	4.35	1/32	1 5/16	13/32	4.10
2B42SH	SH	1/2 - 1 5/8	A-Sol.	4.2	3.8	4.55	1/32	1 5/16	13/32	4.40
2B44SH	SH	1/2 - 1 5/8	A-Sol.	4.4	4.0	4.75	1/32	1 5/16	13/32	4.60
2B46SDS	SDS	1/2 - 2	A-Sol.	4.6	4.2	4.95	1/32	1 5/16	13/32	5.00
2B48SDS	SDS	1/2 - 2	A-Sol.	4.8	4.4	5.15	1/32	1 5/16	13/32	5.40
2B50SDS	SDS	1/2 - 2	A-Sol.	5.0	4.6	5.35	1/32	1 5/16	13/32	6.00
2B52SDS	SDS	1/2 - 2	A-Sol.	5.2	4.8	5.55	1/32	1 5/16	13/32	6.30
2B54SDS	SDS	1/2 - 2	A-Sol.	5.4	5.0	5.75	1/32	1 5/16	13/32	6.60
2B56SDS	SDS	1/2 - 2	A-Web	5.6	5.2	5.95	1/32	1 5/16	13/32	6.90
2B58SDS	SDS	1/2 - 2	A-Web	5.8	5.4	6.15	1/32	1 5/16	13/32	7.20
2B60SDS	SDS	1/2 - 2	A-Web	6.0	5.6	6.35	1/32	1 5/16	13/32	7.50
2B62SDS	SDS	1/2 - 2	A-Web	6.2	5.8	6.55	1/32	1 5/16	13/32	7.80
2B64SDS	SDS	1/2 - 2	A-Web	6.4	6.0	6.75	1/32	1 5/16	13/32	8.20
2B66SDS	SDS	1/2 - 2	A-Web	6.6	6.2	6.95	1/32	1 5/16	13/32	8.60
2B68SDS	SDS	1/2 - 2	A-Arm	6.8	6.4	7.15	1/32	1 5/16	13/32	9.00
2B70SK	SK	1/2 - 2 5/8	D-Sol.	7.0	6.6	7.35	11/32	1 15/16	5/32	9.30
2B74SK	SK	1/2 - 2 5/8	D-Arm	7.4	7.0	7.75	11/32	1 15/16	5/32	10.60
2B80SK	SK	1/2 - 2 5/8	D-Arm	8.0"	7.6"	8.35"	11/32"	1 15/16"	5/32"	11.00
2B86SK	SK	1/2 - 2 5/8	D-Arm	8.6	8.2	8.95	11/32	1 15/16	5/32	11.60
2B94SK	SK	1/2 - 2 5/8	D-Arm	9.4	9.0	9.75	11/32	1 15/16	5/32	13.00
2B110SK	SK	1/2 - 2 5/8	D-Arm	11.0	10.6	11.35	11/32	1 15/16	5/32	14.00
2B124SK	SK	1/2 - 2 5/8	D-Arm	12.4	12.0	12.75	11/32	1 15/16	5/32	18.00
2B136SK	SK	1/2 - 2 5/8	D-Arm	13.6	13.2	13.95	11/32	1 15/16	5/32	20.00
2B154SK	SK	1/2 - 2 5/8	D-Arm	15.4	15.0	15.75	11/32	1 15/16	5/32	23.00
2B160SK	SK	1/2 - 2 5/8	D-Arm	16.0	15.6	16.35	11/32	1 15/16	5/32	24.00
2B184SK	SK	1/2 - 2 5/8	D-Arm	18.4	18.0	18.75	11/32	1 15/16	5/32	29.00
2B200SF	SF	1/2 - 2 15/16	D-Arm	20.0	19.6	20.35	15/32	2 1/16	5/32	33.00
2B250SF	SF	1/2 - 2 15/16	D-Arm	25.0	24.6	25.35	15/32	2 1/16	5/32	41.00
2B300SF	SF	1/2 - 2 15/16	D-Arm	30.0	29.6	30.35	15/32	2 1/16	5/32	51.00
2B380SF	SF	1/2 - 2 15/16	D-Arm	38.0	37.6	38.35	15/32	2 1/16	5/32	64.00
3B34SH	SH	1/2 - 1 5/8	E-Sol.	3.4	3.0	3.75	1 27/32	1 5/16	21/32	4.4
3B36SH	SH	1/2 - 1 5/8	D-Sol.	3.6	3.2	3.95	15/32	1 5/16	1 21/32	4.7
3B38SH	SH	1/2 - 1 5/8	D-Sol.	3.8	3.4	4.15	15/32	1 5/16	1 21/32	5.3
3B40SH	SH	1/2 - 1 5/8	D-Sol.	4.0	3.6	4.35	15/32	1 5/16	1 21/32	5.6
3B42SH	SH	1/2 - 1 5/8	D-Sol.	4.2	3.8	4.55	15/32	1 5/16	1 21/32	5.9
3B44SH	SH	1/2 - 1 5/8	D-Sol.	4.4	4.0	4.75	15/32	1 5/16	1 21/32	6.3
3B46SD	SD	1/2 - 2	A-Sol.	4.6	4.2	4.95	13/32	1 13/16	9/32	6.7
3B48SD	SD	1/2 - 2	A-Sol.	4.8	4.4	5.15	13/32	1 13/16	9/32	7.1
3B50SD	SD	1/2 - 2	A-Sol.	5.0	4.6	5.35	13/32	1 13/16	9/32	7.4
3B52SD	SD	1/2 - 2	A-Sol.	5.2	4.8	5.55	13/32	1 13/16	9/32	7.8
3B54SD	SD	1/2 - 2	A-Sol.	5.4	5.0	5.75	13/32	1 13/16	9/32	8.2
3B56SD	SD	1/2 - 2	A-Sol.	5.6	5.2	5.95	13/32	1 13/16	9/32	8.5
3B58SD	SD	1/2 - 2	A-Sol.	5.8	5.4	6.15	13/32	1 13/16	9/32	8.8
3B60SD	SD	1/2 - 2	A-Sol.	6.0	5.6	6.35	13/32	1 13/16	9/32	9.1
3B62SD	SD	1/2 - 2	A-Sol.	6.2	5.8	6.55	13/32	1 13/16	9/32	9.4
3B64SD	SD	1/2 - 2	A-Sol.	6.4	6.0	6.75	13/32	1 13/16	9/32	9.7
3B66SD	SD	1/2 - 2	A-Sol.	6.6	6.2	6.95	13/32	1 13/16	9/32	10.0
3B68SD	SD	1/2 - 2	B-Arm	6.8	6.4	7.15	13/32	1 13/16	9/32	10.5
3B70SK	SK	1/2 - 2 5/8	D-Sol.	7.0	6.6	7.35	3/32	1 15/16	21/32	11.0
3B74SK	SK	1/2 - 2 5/8	D-Arm	7.4	7.0	7.75	3/32	1 15/16	21/32	12.0
3B80SK	SK	1/2 - 2 5/8	D-Arm	8.0	7.6	8.35	3/32	1 15/16	21/32	12.5
3B86SK	SK	1/2 - 2 5/8	D-Arm	8.6	8.2	8.95	3/32	1 15/16	21/32	13.0
3B94SK	SK	1/2 - 2 5/8	D-Arm	9.4	9.0	9.75	3/32	1 15/16	21/32	16.0
3B110SK	SK	1/2 - 2 5/8	D-Arm	11.0	10.6	11.35	3/32	1 15/16	21/32	19.0
3B124SK	SK	1/2 - 2 5/8	D-Arm	12.4	12.0	12.75	3/32	1 15/16	21/32	24.0
3B136SK	SK	1/2 - 2 5/8	D-Arm	13.6	13.2	13.95	3/32	1 15/16	21/32	27.0
3B154SK	SK	1/2 - 2 5/8	D-Arm	15.4	15.0	15.75	3/32	1 15/16	21/32	30.0
3B160SK	SK	1/2 - 2 5/8	D-Arm	16.0	15.6	16.35	3/32	1 15/16	21/32	33.0
3B184SK	SK	1/2 - 2 5/8	D-Arm	18.4	18.0	18.75	3/32	1 15/16	21/32	38.0
3B200SF	SF	1/2 - 2 15/16	D-Arm	20.0	19.6	20.35	7/32	2 1/16	21/32	43.0
3B250SF	SF	1/2 - 2 15/16	D-Arm	25.0	24.6	25.35	7/32	2 1/16	21/32	54.0
3B300SF	SF	1/2 - 2 15/16	D-Arm	30.0	29.6	30.35	7/32	2 1/16	21/32	67.0
3B380E	E	7/8 - 3 1/2	D-Arm	38.0	37.6	38.35	17/32	2 3/4	9/32	90.0



Table No.1 Specifications

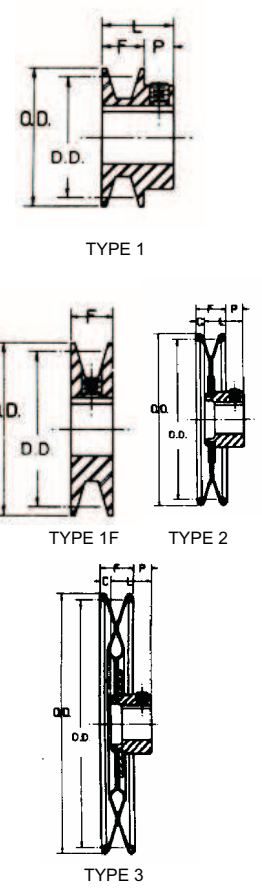
Part No.	Bushing	Bore Range	Type	D.D.		O.D.	E	L	M	Wt.
				"B"Belts	"A" Belts					
4 GROOVES, F = 3 1/4"										
5 GROOVES, F = 4"										
4B34SD	S	1/2 - 2	E-Sol.	3.4	3.0	3.75	2 15/32	1 13/16	1 1/32	5.5
4B36SD	SD	1/2 - 2	E-Sol.	3.6	3.2	3.95	2 15/32	1 13/16	1 1/32	5.8
4B38SD	SD	1/2 - 2	E-Sol.	3.8	3.4	4.15	2 15/32	1 13/16	1 1/32	6.2
4B40SD	SD	1/2 - 2	E-Sol.	4.0	3.6	4.35	2 3/32	1 13/16	21/32	6.6
4B42SD	SD	1/2 - 2	E-Sol.	4.2	3.8	4.55	2 3/32	1 13/16	21/32	6.9
4B44SD	SD	1/2 - 2	E-Sol.	4.4	4.0	4.75	2 3/32	1 13/16	21/32	7.2
4B46SD	SD	1/2 - 2	A-Sol.	4.6	4.2	4.95	21/32	1 13/16	25/32	7.6
4B48SD	SD	1/2 - 2	A-Sol.	4.8	4.4	5.15	21/32	1 13/16	25/32	8.0
4B50SD	SD	1/2 - 2	A-Sol.	5.0	4.6	5.35	21/32	1 13/16	25/32	8.4
4B52SD	SD	1/2 - 2	A-Sol.	5.2	4.8	5.55	21/32	1 13/16	25/32	8.8
4B54SD	SD	1/2 - 2	A-Sol.	5.4	5.4	5.75	21/32	1 13/16	25/32	9.2
4B56SD	SD	1/2 - 2	A-Sol.	5.6	5.2	5.95	21/32	1 13/16	25/32	9.6
4B58SD	SD	1/2 - 2	A-Sol.	5.8	5.4	6.15	21/32	1 13/16	25/32	10.0
4B60SD	SD	1/2 - 2	A-Sol.	6.0	5.6	6.35	21/32	1 13/16	25/32	10.4
4B62SD	SD	1/2 - 2	A-Sol.	6.2	5.8	6.55	21/32	1 13/16	25/32	10.8
4B64SD	SD	1/2 - 2	A-Sol.	6.4	6.0	6.75	21/32	1 13/16	25/32	12.0
4B66SD	SD	1/2 - 2	A-Sol.	6.6	6.2	6.95	21/32	1 13/16	25/32	12.4
4B68SD	SD	1/2 - 2	A-Arm	6.8	6.4	7.15	21/32	1 13/16	25/32	13.0
4B70SK	SK	1/2 - 2 5/8	A-Sol.	7.0	6.6	7.35	7/32	1 15/16	1 3/32	13.5
4B74SK	SK	1/2 - 2 5/8	A-Arm	7.4	7.0	7.75	7/32	1 15/16	1 3/32	14.0
4B80SK	SK	1/2 - 2 5/8	A-Arm	8.0	7.6	8.35	7/32	1 15/16	1 3/32	15.5
4B86SK	SK	1/2 - 2 5/8	A-Arm	8.6	8.2	8.95	7/32	1 15/16	1 3/32	17.0
4B94SK	SK	1/2 - 2 5/8	A-Arm	9.4	9.0	9.75	7/32	1 15/16	1 3/32	19.0
4B110SK	SK	1/2 - 2 5/8	A-Arm	11.0	10.6	11.35	7/32	1 15/16	1 3/32	22.0
4B124SK	SK	1/2 - 2 5/8	A-Arm	12.4	12.0	12.75	7/32	1 15/16	1 3/32	29.0
4B136SK	SK	1/2 - 2 5/8	A-Arm	13.6	13.2	13.95	7/32	1 15/16	1 3/32	34.0
4B154SF	SF	1/2 - 2 15/16	A-Arm	15.4	15.0	15.75	5/32	2 1/16	1 1/32	39.0
4B160SF	SF	1/2 - 2 15/16	A-Arm	16.0	15.6	16.35	5/32	2 1/16	1 1/32	42.0
4B184SF	SF	1/2 - 2 15/16	A-Arm	18.4	18.0	18.75	5/32	2 1/16	1 1/32	47.0
4B200SF	SF	1/2 - 2 15/16	A-Arm	20.0	19.6	20.35	5/32	2 1/16	1 1/32	51.0
4B250E	E	7/8 - 3 1/2	D-Arm	25.0	24.6	25.35	5/32	2 3/4	21/32	73.0
4B300E	E	7/8 - 3 1/2	D-Arm	30.0	29.6	30.35	5/32	2 3/4	21/32	86.0
4B380E	E	7/8 - 3 1/2	D-Arm	38.0	37.6	38.35	5/32	2 3/4	21/32	109.0
5B34SD	SD	1/2" - 2"	E-Sol.	3.4"	3.0"	3.75"	3 7/32"	1 13/16"	1 1/32"	6.1
5B36SD	SD	1/2 - 2	E-Sol.	3.6	3.2	3.95	3 7/32	1 13/16	1 1/32	6.6
5B38SD	SD	1/2 - 2	E-Sol.	3.8	3.4	4.15	3 7/32	1 13/16	1 1/32	7.1
5B40SD	SD	1/2 - 2	E-Sol.	4.0	3.6	4.35	2 27/32	1 13/16	21/32	7.4
5B42SD	SD	1/2 - 2	E-Sol.	4.2	3.8	4.55	2 27/32	1 13/16	21/32	8.0
5B44SD	SD	1/2 - 2	E-Sol.	4.4	4.0	4.75	2 27/32	1 13/16	21/32	8.5
5B46SD	SD	1/2 - 2	A-Sol.	4.6	4.2	4.95	21/32	1 13/16	1 17/32	9.0
5B48SD	SD	1/2 - 2	A-Sol.	4.8	4.4	5.15	21/32	1 13/16	1 17/32	9.4
5B50SD	SD	1/2 - 2	A-Sol.	5.0	4.6	5.35	21/32	1 13/16	1 17/32	10.0
5B52SD	SD	1/2 - 2	A-Sol.	5.2	4.8	5.55	21/32	1 13/16	1 17/32	10.4
5B54SK	SK	1/2 - 2 5/8	A-Sol.	5.4	5.0	5.75	17/32	1 15/16	1 17/32	10.8
5B56SK	SK	1/2 - 2 5/8	A-Sol.	5.6	5.2	5.95	17/32	1 15/16	1 17/32	11.3
5B58SK	SK	1/2 - 2 5/8	A-Sol.	5.8	5.4	6.15	17/32	1 15/16	1 17/32	12.0
5B60SK	SK	1/2 - 2 5/8	A-Sol.	6.0	5.6	6.35	17/32	1 15/16	1 17/32	14.0
5B62SK	SK	1/2 - 2 5/8	A-Sol.	6.2	5.8	6.55	17/32	1 15/16	1 17/32	15.0
5B64SK	SK	1/2 - 2 5/8	A-Sol.	6.4	6.0	6.75	17/32	1 15/16	1 17/32	16.0
5B66SK	SK	1/2 - 2 5/8	A-Sol.	6.6	6.2	6.95	17/32	1 15/16	1 17/32	17.0
5B68SK	SK	1/2 - 2 5/8	A-Sol.	6.8	6.4	7.15	17/32	1 15/16	1 17/32	18.0
5B70SF	SF	1/2 - 2 15/16	A-Sol.	7.0	6.6	7.35	15/32	2 1/16	1 15/32	19.0
5B74SF	SF	1/2 - 2 15/16	A-Web.	7.4	7.0	7.75	15/32	2 1/16	1 15/32	20.0
5B80SF	SF	1/2 - 2 15/16	A-Web.	8.0	7.6	8.35	15/32	2 1/16	1 15/32	21.0
5B86SF	SF	1/2 - 2 15/16	A-Web.	8.6	8.2	8.95	15/32	2 1/16	1 15/32	22.0
5B94SF	SF	1/2 - 2 15/16	A-Arm	9.4	9.0	9.75	15/32	2 1/16	1 15/32	24.0
5B110SF	SF	1/2 - 2 15/16	A-Arm	11.0	10.6	11.35	15/32	2 1/16	1 15/32	29.0
5B124SF	SF	1/2 - 2 15/16	A-Arm	12.4	12.0	12.75	15/32	2 1/16	1 15/32	34.0
5B136SF	SF	1/2 - 2 15/16	A-Arm	13.6	13.2	13.95	15/32	2 1/16	1 15/32	38.0
5B154SF	SF	1/2 - 2 15/16	A-Arm	15.4	15.0	15.75	15/32	2 1/16	1 15/32	46.0
5B160SF	SF	1/2 - 2 15/16	A-Arm	16.0	15.6	16.35	15/32	2 1/16	1 15/32	49.0
5B184SF	SF	1/2 - 2 15/16	A-Arm	18.4	18.0	18.75	15/32	2 1/16	1 15/32	55.0
5B200SE	E	7/8 - 3 1/2	A-Arm	20.0	19.6	20.35	3/32	2 3/4	1 5/32	65.0
5B250SE	E	7/8 - 3 1/2	A-Arm	25.0	24.6	25.35	3/32	2 3/4	1 5/32	86.0
5B300SE	E	7/8 - 3 1/2	A-Arm	30.0	29.6	30.35	3/32	2 3/4	1 5/32	102.0
5B380SE	E	7/8 - 3 1/2	A-Arm	38.0	37.6	38.35	3/32	2 3/4	1 5/32	132.0



Single Groove Sheaves for "4L" or "A" and "5L" or "B" Belts

Table No. 1 Stock Sizes-Finished Bore

Part No.	DIAMETER		Type	STOCK BORES MARKED "X"					DIMENSIONS				Wt. Lbs.
	Out-side	Datum "A"		1/2"	5/8"	3/4"	7/8"	1"	F	L	P	C	
BAR STEEL													
AS15	1.50"	1.25"	1	X	-	-	-	-	5/8"	1 1/16"	7/16"	-	0.2
AS17	1.75	1.50	1	X	X	X▲	-	-	5/8	1 1/16	7/16	-	0.3
AS20	2.00	1.80	1F	X	X●	X●	-	-	5/8	-	-	-	0.3
AS21	2.10	1.90	1F	X	X●	X●	-	-	5/8	-	-	-	0.3
AS22	2.20	2.00	1F	X	X	X●	-	-	5/8	-	-	-	0.4
AS23	2.30	2.10	1F	X	X	X	-	-	5/8	-	-	-	0.4
AS25	2.50	2.30	1F	X	X	X	X	-	5/8	-	-	-	0.5
AS26	2.60	2.40	1F	X	X	X	X	-	5/8	-	-	-	0.5
AS27	2.70	2.50	1F	X	X	X	X	-	5/8	-	-	-	0.6
AS28	2.80	2.60	1F	X	X	X	X	-	5/8	-	-	-	0.6
AS30	3.05	2.80	1F	X	X	X	X	X	5/8	-	-	-	0.8
AS32	3.25	3.00	1F	X	X	X	X	X	5/8	-	-	-	0.9
AS34	3.45	3.20	1F	X	X	X	X	X	5/8	-	-	-	1.0
PRESSED STEEL													
AS39	4.04	3.5	2	X	X	X	X	X	15/	1 3/16	9/16	5/16"	0.9
AS44	4.54	4.0	2	X	X	X	X	X	15/	1 3/16	9/16	5/16	1.0
AS49	5.04	4.5	2	X	X	X	X	X	15/	1 3/16	9/16	5/16	1.1
AS54	5.43	5.0	2	X	X	X	X	X	15/	1 3/16	9/16	5/16	1.3
AS64	6.54	6.0	2	X	X	X	X	X	15/	1 3/16	9/16	5/16	1.6
AS74	7.54	7.0	2	X	X	X	-	X	15/	1 3/16	9/16	5/16	1.8
★AS84	8.54	8.0	2	X	X	X	-	X	15/	1	17/32	9/32	2.6
★AS94	9.50	9.0	3	X	X	X	-	X	15/	1	17/32	9/32	2.9
★AS104	10.50	10.0	3	X	X	X	-	X	15/	1	17/32	9/32	3.4
★AS114	11.50	11.0	3	-	X	X	-	X	15/	1	17/32	9/32	3.8
★AS124	12.50	12.0	3	X	X	X	-	X	15/	1	17/32	9/32	4.5



▲No Keyseat. ● Set screw at 90° to keyseat. ★ For 1 1/8 Bore and Larger:L=1 17/32,p=7/8". All stock sizes are furnished with hollow head setscrew.

Standard Keyseats

Bore Range	Keyseat	Bore Range	Keyseat
3/8-1/2	None	15/16-1 1/4	1/4x1/8
5/8-7/8	3/16x3/32	1 7/16	3/8x3/16

Table No. 2

Part No.	DIAMETER			Type	STOCK BORES MARKED "X"								DIMENSIONS				Wt. Lbs.	
	Out-side	Datum "A"	Datum "B"		1/2"	5/8"	3/4"	7/8"	1"	1 1/8"	1 3/16"	1	1	F	L	P		C
BAR STEEL																		
BS24	2.40"	1.80	2.20"	1F	X	-	-	-	-	-	-	-	-	3/4"	-	-	-	0.4
BS24	2.40	1.80	2.20	1	-	X	X	-	-	-	-	-	-	3/4	1 3/16"	7/16"	-	0.5
BS25	2.50	1.90	2.30	1F	X	-	-	-	-	-	-	-	-	3/4	-	-	-	0.5
BS25	2.50	1.90	2.30	1	-	X	X	X	-	-	-	-	-	3/4	1 3/16	7/16	-	0.7
BS26	2.60	2.00	2.40	1F	X	-	-	-	-	-	-	-	-	3/4	-	-	-	0.5
BS26	2.60	2.00	2.40	1	-	X	X	X	-	-	-	-	-	3/4	1 3/16	7/16	-	0.7
BS27	2.70	2.10	2.50	1F	X	X	-	-	-	-	-	-	-	3/4	-	-	-	0.6
BS27	2.70	2.10	2.50	1	-	-	X	X	-	-	-	-	-	3/4	1 3/16	7/16	-	0.8
BS28	2.96	2.20	2.60	1F	X	X	X	X	-	-	-	-	-	3/4	-	-	-	0.8
BS28	2.96	2.20	2.60	1	-	-	-	-	X	-	-	-	-	3/4	1 3/16	7/16	-	0.8
BS30	3.16	2.40	2.80	1F	X	X	X	X	X	-	-	-	-	3/4	-	-	-	1.0
BS32	3.36	2.60	3.00	1F	X	X	X	X	X	-	-	-	-	3/4	-	-	-	1.1
PRESSED STEEL																		
BS34	3.57	2.8	3.2	2	X	X	X	-	-	-	-	-	-	1 1/16	1 3/16	7/16	5/16"	0.8
BS36	3.77	3.0	3.4	2	X	X	X	-	-	-	-	-	-	1 1/16	1 3/16	7/16	5/16	0.8
BS40	3.97	3.2	3.6	2	X	X	X	X	X	-	-	-	-	1 1/16	1 3/16	7/16	5/16	0.9
BS45	4.27	3.5	3.9	2	X	X	X	X	X	-	-	-	-	1 1/16	1 3/16	7/16	5/16	1.1
BS50	4.77	4.0	4.4	2	X	X	X	X	X	-	-	-	-	1 1/16	1 3/16	7/16	5/16	1.1
BS55	5.27	4.5	4.9	2	X	X	X	-	X	-	-	-	-	1 1/16	1 3/16	7/16	5/16	1.3
BS60	5.77	5.0	5.4	2	X	X	X	X	X	-	-	-	-	1 1/16	1 3/16	7/16	5/16	1.4
BS70	6.94	6.0	6.4	2	X	X	X	-	X	-	-	-	-	1 1/8	1 3/16	7/16	3/8	1.5
▲BS80	7.94	7.0	7.4	2	X	X	X	-	X	-	-	-	X	1 1/8	1 3/16	7/16	3/8	2.1
▲BS90	8.94	8.0	8.4	2	-	X	X	-	X	-	-	-	-	1 1/8	1 3/16	7/16	3/8	2.5
▲BS100	9.93	9.0	9.4	3	-	X	X	-	X	-	-	-	-	1 1/8	1 3/16	7/16	3/8	3.3
▲BS110	10.93	10.0	10.4	3	-	X	X	-	X	-	-	-	-	1 1/8	1 3/16	7/16	3/8	3.6
▲BS120	11.93	11.0	11.4	3	-	-	X	-	X	-	-	-	-	1 1/8	1 3/16	7/16	3/8	4.0
■BS130	12.93	12.0	12.4	3	-	-	X	-	X	-	-	-	-	1 1/8	1 3/16	7/16	3/8	4.9
■BS160	15.93	15.0	15.4	3	-	-	X	-	X	-	X	X	X	1 1/8	1 3/16	7/16	3/8	7.8
■BS190	18.93	18.0	18.4	3	-	-	X	-	X	X	X	X	X	1 1/8	1 3/16	7/16	3/8	10.0

▲For 1 1/8 Bores and larg;L=1 17/32,P=25/32,C=3/8". ■For 1 1/8" Bores and Large:L=1 17/32",P=27/32",C=7/16".

NOTE-DO NOT USE NOTCHED BELT RATINGS WITH "PRESSED STEEL" SHEAVES.5000 FPM MAX.ON TYPE 2 SHEAVES.

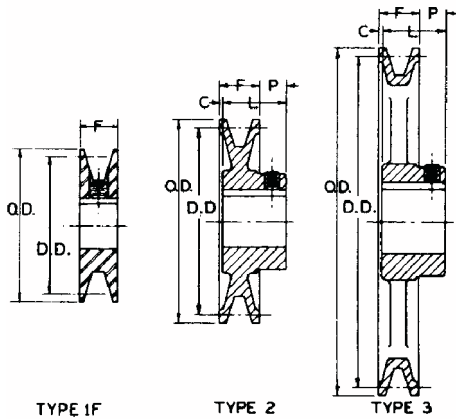
Single Groove Sheaves for "3L"

Table No. 1 Stock Sizes-Finished Bore

Part No.	DIAMETER		Type	STOCK BORES MARKED "X"					DIMENSIONS				Wt.
	Outside	Pitch "3L"		3/8"	1/2"	5/8"	3/4"	1"	F	L	P	C	
OK12	1.42"	1.25"	1F	X	X	-	-	-	1/2"	1/2"	-	-	0.1
OK15	1.67	1.50	1F	X	X	X	-	-	1/2	1/2	-	-	0.1
OK17	1.92	1.75	1F	-	X	X	X	-	1/2	1/2	-	-	0.3
OK20	2.17	2.00	1F	-	X	X	X	-	1/2	1/2	-	-	0.4
OK22	2.40	2.25	1F	-	X	X	X	-	1/2	1/2	-	-	0.5
OK25	2.67	2.50	1F	-	X	X	X	-	1/2	1/2	-	-	0.05
OK30	3.17	3.00	2	-	X	X	X	-	9/16	1 1/32	15/32"	0	1.0
OK35	3.67	3.50	2	-	X	X	X	-	9/16	1 1/32	15/32	0	1.0
OK40	4.17	4.00	3	-	X	X	X	X	9/16	1 1/32	15/32	0	0.9
OK45	4.67	4.50	3	-	X	X	X	X	9/16	1 1/32	15/32	0	1.3
OK50	5.17	5.00	3	-	X	X	X	X	9/16	1 1/32	15/32	0	1.6
OK60	6.17	6.00	3	-	X	X	X	X	9/16	1 1/32	15/32	0	1.8
OK70	7.17	7.00	3	-	X	X	X	X	9/16	1 1/32	15/32	0	2.3
OK80	8.17	8.00	3	-	X	X	X	-	5/8	1 1/16	7/16	0	2.8
OK90	9.17	9.00	3	-	X	X	X	-	5/8	1 1/16	7/16	0	3.0
OK100	10.17	10.00	3	-	-	X	X	-	5/8	1 1/16	7/16	0	3.8

Type 1F sheaves are machined from bar steel.

Types 2 and 3 are machined from cast iron. All have hollow head setscrews and standard keyseats.



AL Standard Keyseats

Table No. 3

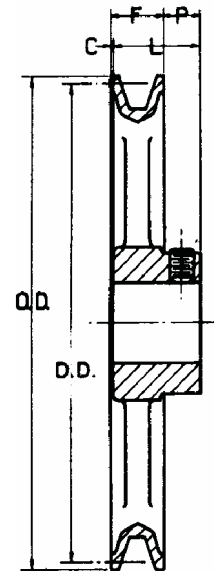
Bore Range	Keyseat
3/8" to 1/2"	None
5/8 to 7/8	3/16"x3/32"
1 5/16 to 1 1/8	1/4x1/8

Table No. 1 Stock "OL", "AL" and "AM" Sheaves

Part No.	DIAMETER		STOCK BORES MARKED "X"			DIMENSIONS				Wt. Lbs.
	Outside	Pitch	5/8"	3/4"	1"	F	L	P	C	
★OL50	4.93"	4.80"	X	X	-	19/32	1 1/16"	15/32"	-	1.1
★OL60	5.93	5.80	X	X	-	19/32	1 1/16	15/32	-	1.4
★OL70	6.93	6.80	X	-	-	19/32	1 1/16	15/32	-	1.5
AL54	4.93	4.78	X	X	X	19/32	1 1/16	15/32	-	1.1
AL64	5.93	5.78	X	X	X	19/32	1 1/16	15/32	-	1.2
AL74	6.93	6.78	X	X	X	19/32	1 1/16	15/32	-	1.5
AL84	7.93	7.78	X	X	X	19/32	1 1/16	15/32	-	1.8
AL94	8.93	8.78	-	X	X	19/32	1 1/16	15/32	-	2.4
AL104	9.93	9.78	-	X	X	19/32	1 1/16	15/32	-	2.9
AL114	10.93	10.78	-	X	X	19/32	1 1/16	15/32	-	3.1
AL124	11.93	11.78	-	X	X	19/32	1 1/16	15/32	-	3.8
AM144	14.16	14.00	-	-	X	11/16	1 3/4	13/32	1/32"	5.2

★ For use with "3L" Belts; Other sizes for use with "4L" or "A"

Stock "OL", "AL" and "AM" Sheaves are equipped with Hollow Head Set Screws and have no Keyseat.



Two Groove Variable Pitch Sheaves for "3L", "4L", "5L", "A", "B" or "5V" Belts

Table No. 1 Stock Sizes-Finished Bore (Inches)

Part No.	Typ	DIAMETER RANGE																Stock Bores Marked "x"								
		"3L" BELTS				"4L" or "A" BELTS				"5L" OR "B" BELTS				'5V'				1/2	5/8	3/4	7/8	1	1 1/8	1 1/4	1 3/8	1 5/8
		Min. Pitch	Turns Open	Max Pitch	Turns Open	Min. Pitch	Turns Open	Max Pitch	Turns Open	Min. Pitch	Turns Open	Max Pitch	Turns Open	Min. Pitch	Turns Open	Turns Pitch	Turns Open									
2VP36	4	1.9	4	2.7	0	2	5	3.0	0	2.5	5	3.3	1	-	-	-	-	x	x	x	x	-	-	-	-	-
2VP42	4	2.5	4	3.3	0	2.6	5	3.6	0	2.9	6	3.9	1	-	-	-	-	-	x	x	x	x	x	-	-	-
2VP50	5	3.3	4	4.1	0	3.4	5	4.4	0	3.7	6	4.7	1	-	-	-	-	-	x	x	x	x	x	-	-	-
2VP56	5	3.9	4	4.7	0	4	5	5.0	0	4.3	6	5.3	1	-	-	-	-	-	x	x	x	x	x	-	-	-
2VP60	5	-	-	-	-	4.2	5	5.2	0	4.3	6	5.5	0	-	-	-	-	-	-	x	x	-	x	-	x	x
2VP62	5	4.5	4	5.3	0	4.6	5	5.6	0	4.9	6	5.9	1	5.3	6	6.3	1	-	-	x	x	x	x	x	-	-
2VP65	5	-	-	-	-	4.7	5	5.7	0	4.8	6	6.0	0	5.2	6	6.4	0	-	-	x	x	-	x	-	x	x
2VP68	5	5.1	4	5.9	0	5.2	5	6.2	0	5.5	6	6.5	1	5.9	6	6.9	1	-	-	-	x	x	x	x	-	-
2VP71	5	-	-	-	-	5.3	5	6.3	0	5.4	6	6.6	0	5.8	6	7.0	0	-	-	x	x	-	x	-	x	x
2VP75	5	-	-	-	-	5.7	5	6.7	0	5.8	6	7.0	0	6.2	6	7.4	0	-	-	x	x	-	x	-	x	x

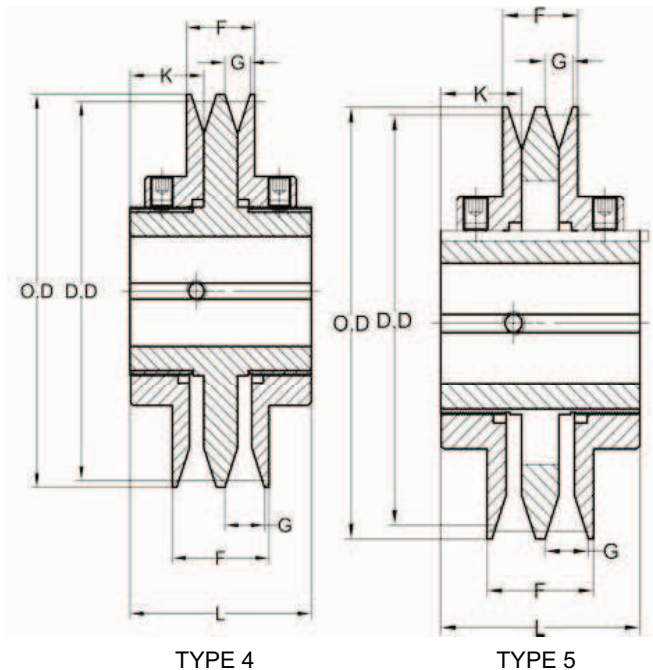
All fitted with Hollow Head Setscrews.

Table No. 2 Dimensions (Inches)

Part No.	Typ	DIMENSIONS(Inches)							Wt. Lbs
		O.D	F		G		L	K	
			Max	Min.	Max	Min.			
2VP36	4	3.35	2	1 3/8	13/16	1/2	3	1 3/16	3.4
2VP42	4	3.95	2 1/8	1 3/8	7/8	1/2	3	1 3/16	4.4
2VP50	5	4.75	2 1/8	1 3/8	7/8	1/2	3	1 3/16	6.3
2VP56	5	5.35	2 1/8	1 3/8	7/8	1/2	3	1 3/16	7.8
2VP60	5	6.00	2 3/8	1 5/8	1 1/32	21/32	3 1/4	1 1/4	10.6
2VP62	5	5.95	2 1/8	1 3/8	7/8	1/2	3	1 3/16	10
2VP65	5	6.50	2 3/8	1 5/8	1 1/32	21/32	3 1/4	1 1/4	12.3
2VP68	5	6.55	2 1/8	1 3/8	7/8	1/2	3	1 3/16	11.7
2VP71	5	7.10	2 3/8	1 5/8	1 1/32	21/32	3 1/4	1 1/4	14.6
2VP75	5	7.50	2 3/8	1 5/8	1 1/32	21/32	3 1/4	1 1/4	16.5

Table No. 3 Standard Keyseat

Bore Range	Keyseat
1/2	None
5/8-7/8	3/16x3/32
1-1 1/4	1/4x1/8
1 3/8	5/16x5/32



Stock "VL" and "VM" Variable Pitch Sheaves

Table No. 1

Part No.	DIAMETER RANGE												Stock Bores Marked "x"				
	"3L" BELTS				"4L" or "A" BELTS				"5L" or "B" BELTS				1/2	5/8	3/4	7/8	
	Min. Pitch	Turns Open	Max Pitch	Turns Open	Min. Dat	Turns Open	Max Pitch	Turns Open	Min. Pitch	Turns Open	Max Pitch	Turns Open					
1VL25	1.6	4	2.4	0	-	-	-	-	-	-	-	-	-	x	x	-	-
1VL30	1.8	4	2.7	0	-	-	-	-	-	-	-	-	-	x	x	-	-
1VL34	1.7	4	2.5	0	1.9	5	2.9	0	2.4	5	3.2	1	1	x	x	x	-
1VL40	2.3	4	3.1	0	2.4	5	3.4	0	2.7	6	3.7	1	1	x	x	x	x
1VL44	2.7	4	3.5	0	2.8	5	3.8	0	3.1	6	4.1	1	1	x	x	x	x
1VM50	3.3	4	4.1	0	3.4	5	4.4	0	3.7	6	4.7	1	1	x	x	x	x

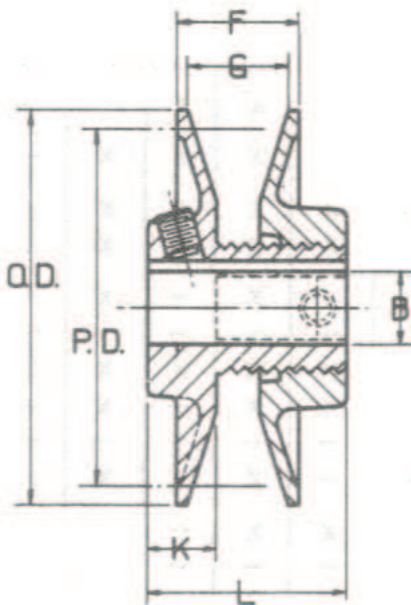
Table No. 2 Dimensions

Part No.	DIMENSIONS							
	O.D.	F		G		L	K	Wt. Lbs
		Max.	Min.	Max.	Min.			
1VL25	2.50	25/32	17/32	5/8	3/8	1 1/2	37/64	.8
1VL30	2.87	25/32	17/32	5/8	3/8	1 1/2	37/64	1.0
1VL34	3.15	1	5/8	7/8	1/2	1 11/16	37/64	1.1
1VL40	3.75	1	5/8	7/8	1/2	1 11/16	37/64	1.3
1VL44	4.15	1	5/8	7/8	1/2	1 11/16	37/64	1.3
1VM50	4.75	1 1/16	11/16	7/8	1/2	1 7/8	21/32	2.8

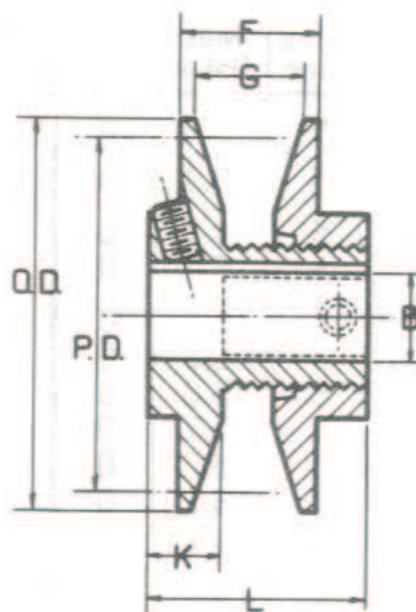
"VL", "VM" Sheaves are machined. Both are furnished with Standard Keyseats and Hollow Head Setscrews.

Standard Keyseats

Bore Range	Keyseat
1/2	none
5/8-7/8	3/16x3/32



1VL25-1VL44



1VM50

