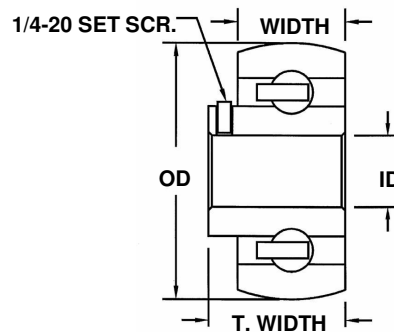
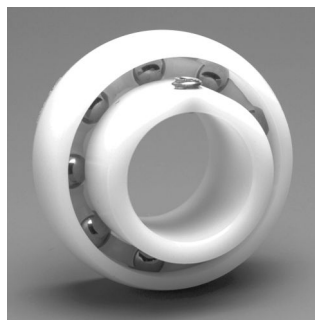


INSERT BALL BEARINGS

Plastic Raceways Single & Double Row



Single Row

Standard Plastic is Polypropylene

PART NUMBER	ID	OD	WIDTH	TOTAL WIDTH	MAX. RPM WITH NO LOAD	DYNAMIC LOAD CAPACITY	STATIC LOAD CAPACITY
AIB204-1/2-6	1/2 in	1.850 in	0.591 in	0.950 in	840	78 lbs	52 lbs
AIB204-5/8-6	5/8 in	1.850 in	0.591 in	0.950 in	840	78 lbs	52 lbs
AIB204-3/4-6	3/4 in	1.850 in	0.591 in	0.950 in	840	78 lbs	52 lbs
AIB205-5/8-6	5/8 in	2.047 in	0.709 in	1.060 in	729	92 lbs	61 lbs
AIB205-3/4-6	3/4 in	2.047 in	0.709 in	1.060 in	729	92 lbs	61 lbs
AIB205-1-6	1 in	2.047 in	0.709 in	1.060 in	729	92 lbs	61 lbs
AIB206-1-1/16-6	1 1/16 in	2.441 in	0.709 in	1.220 in	690	151 lbs	114 lbs
AIB206-1-1/8-6	1 1/8 in	2.441 in	0.709 in	1.220 in	690	151 lbs	114 lbs
AIB206-1-1/4-6	1 1/4 in	2.441 in	0.709 in	1.220 in	690	151 lbs	114 lbs
AIB206-1-3/16-6	1 3/16 in	2.441 in	0.709 in	1.220 in	690	151 lbs	114 lbs

Double Row

Standard Plastic is Polypropylene

PART NUMBER	ID	OD	WIDTH	TOTAL WIDTH	MAX. RPM WITH NO LOAD	DYNAMIC LOAD CAPACITY	STATIC LOAD CAPACITY
AIB-1/2-DR	1/2 in	1.850 in	0.512 in	0.886 in	672	117 lbs	104 lbs
AIB-5/8-DR	5/8 in	1.850 in	0.512 in	0.886 in	672	117 lbs	104 lbs
AIB-3/4-DR	3/4 in	1.850 in	0.591 in	0.950 in	672	117 lbs	104 lbs
AIB-5/8L-DR	5/8 in	2.047 in	0.709 in	1.060 in	583	138 lbs	92 lbs
AIB-3/4L-DR	3/4 in	2.047 in	0.709 in	1.060 in	583	138 lbs	92 lbs
AIB-1-DR	1 in	2.047 in	0.709 in	1.220 in	583	138 lbs	92 lbs
AIB-1-1/8-DR	1 1/8 in	2.441 in	0.709 in	1.220 in	552	189 lbs	142 lbs
AIB-1-1/4-DR	1 1/4 in	2.441 in	0.709 in	1.220 in	552	189 lbs	142 lbs
AIB-1-3/16-DR	1 3/16 in	2.441 in	0.709 in	1.220 in	552	189 lbs	142 lbs

- Open type standard.
- Shielded type made to order.
- For Delivery see Availability and Material Selection Page.
- Load & Speed calculations are for reference only. KMS recommends testing in actual environment to be encountered.
- Information presented is believed to be accurate at the time of publication but is subject to change without notice.

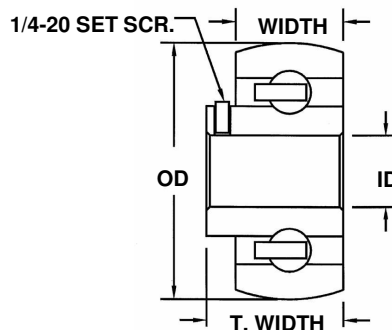
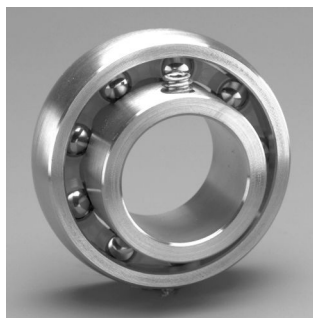
VARIATIONS & CUSTOM SIZES MADE EASILY FOR LOW AND HIGH QUANTITIES
Corrosion Resistant • Lube Free • Hygienic • Non-Metallic • Non-Magnetic • Light Weight • Design Flexibility



KMS Bearings, Inc. • 1560 Harmony Circle, Anaheim, CA 92807 • (714) 970-0280 • FAX (714) 970-0560
 Toll Free (800) 448-2412 • www.KMSBearings.com

INSERT BALL BEARINGS

316 Stainless Raceways Single Row



Single Row

PART NUMBER	ID	OD	WIDTH	TOTAL WIDTH	MAX. RPM WITH NO LOAD	DYNAMIC LOAD CAPACITY	STATIC LOAD CAPACITY
SSIB204-1/2-6	1/2 in	1.850 in	0.591 in	0.950 in	840	234 lbs	156 lbs
SSIB204-5/8-6	5/8 in	1.850 in	0.591 in	0.950 in	840	234 lbs	156 lbs
SSIB204-3/4-6	3/4 in	1.850 in	0.591 in	0.950 in	840	234 lbs	156 lbs
SSIB205-3/4-6	3/4 in	2.047 in	0.709 in	1.060 in	729	276 lbs	183 lbs
SSIB205-1-6	1 in	2.047 in	0.709 in	1.060 in	729	276 lbs	183 lbs
SSIB206-1-1/16-6	1 1/16 in	2.441 in	0.709 in	1.060 in	690	378 lbs	285 lbs
SSIB206-1-1/8-6	1 1/8 in	2.441 in	0.709 in	1.220 in	690	378 lbs	285 lbs
SSIB206-1-1/4-6	1 1/4 in	2.441 in	0.709 in	1.220 in	690	378 lbs	285 lbs
SSIB206-1-3/16-6	1 3/16 in	2.441 in	0.709 in	1.220 in	690	378 lbs	285 lbs

- Open type standard.
- Shielded type made to order.

- For Delivery see Availability and Material Selection Page.
- Load & Speed calculations are for reference only. KMS recommends testing in actual environment to be encountered.
- Information presented is believed to be accurate at the time of publication but is subject to change without notice.

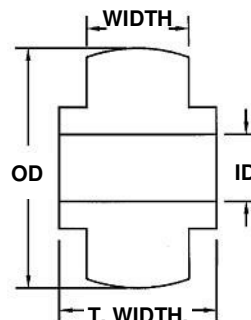
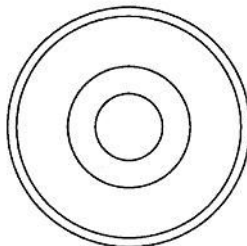
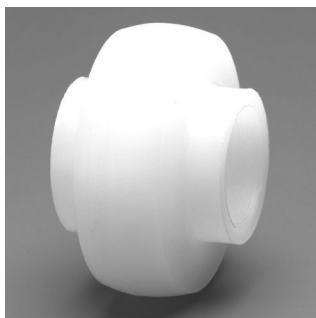
VARIATIONS & CUSTOM SIZES MADE EASILY FOR LOW AND HIGH QUANTITIES
Corrosion Resistant • Lube Free • Hygienic • Non-Metallic • Non-Magnetic • Light Weight • Design Flexibility



KMS Bearings, Inc. • 1560 Harmony Circle, Anaheim, CA 92807 • (714) 970-0280 • FAX (714) 970-0560
 Toll Free (800) 448-2412 • www.KMSBearings.com

INSERT SLEEVE BEARINGS

Solid UHMW Plastic



PART NUMBER	ID	OD	WIDTH	TOTAL WIDTH	MAX. RPM WITH NO LOAD	DYNAMIC LOAD CAPACITY	STATIC LOAD CAPACITY
SIB204-5/8	5/8 in	1.850 in	0.591 in	1.125 in	350	275 lbs	325 lbs
SIB204-3/4	3/4 in	1.850 in	0.591 in	1.125 in	350	275 lbs	325 lbs
SIB205-3/4	3/4 in	2.047 in	0.709 in	1.250 in	325	350 lbs	400 lbs
SIB205-7/8	7/8 in	2.047 in	0.709 in	1.250 in	325	350 lbs	400 lbs
SIB205-1	1 in	2.047 in	0.709 in	1.250 in	300	370 lbs	425 lbs
SIB206-1-1/8	1 1/8 in	2.441 in	0.709 in	1.250 in	285	450 lbs	500 lbs
SIB206-1-1/4	1 1/4 in	2.441 in	0.709 in	1.250 in	285	450 lbs	500 lbs
SIB206-1-3/16	1 3/16 in	2.441 in	0.709 in	1.250 in	285	450 lbs	500 lbs

- For Delivery see Availability and Material Selection Page.
- Load & Speed calculations are for reference only. KMS recommends testing in actual environment to be encountered.
- Information presented is believed to be accurate at the time of publication but is subject to change without notice.

VARIATIONS & CUSTOM SIZES MADE EASILY FOR LOW AND HIGH QUANTITIES
Corrosion Resistant • Lube Free • Hygienic • Non-Metallic • Non-Magnetic • Light Weight • Design Flexibility



KMS Bearings, Inc. • 1560 Harmony Circle, Anaheim, CA 92807 • (714) 970-0280 • FAX (714) 970-0560
 Toll Free (800) 448-2412 • www.KMSBearings.com

INSERT BALL BEARINGS

52100 Steel Raceways



Single Row

PART NUMBER	ID	OD	TOTAL WIDTH	DYNAMIC LOAD CAPACITY	STATIC LOAD CAPACITY
STL204-IB-1/2	1/2 in	1.850 in	Consult KMS for in stock widths	2220 lbs	1390 lbs
STL204-IB-5/8	5/8 in	1.850 in		2220 lbs	1390 lbs
STL204-IB-3/4	3/4 in	1.850 in		2220 lbs	1390 lbs
STL205-IB-3/4	3/4 in	2.047 in		2430 lbs	1560 lbs
STL205-IB-1	1 in	2.047 in		2430 lbs	1560 lbs
STL206-IB-1-1/8	1 1/8 in	2.441 in		3490 lbs	2250 lbs
STL206-IB-1-1/4	1 1/4 in	2.441 in		3490 lbs	2250 lbs
STL206-IB-1-3/16	1 3/16 in	2.441 in		3490 lbs	2250 lbs

These 52100 steel bearings are not corrosion resistant. They offer only limited corrosion resistance when they are fitted into KMS plastic mounted block.

- For Delivery see Availability and Material Selection Page.
- Load & Speed calculations are for reference only. KMS recommends testing in actual environment to be encountered.
- Information presented is believed to be accurate at the time of publication but is subject to change without notice.

VARIATIONS & CUSTOM SIZES MADE EASILY FOR LOW AND HIGH QUANTITIES
Corrosion Resistant • Lube Free • Hygienic • Non-Metallic • Non-Magnetic • Light Weight • Design Flexibility



KMS Bearings, Inc. • 1560 Harmony Circle, Anaheim, CA 92807 • (714) 970-0280 • FAX (714) 970-0560
 Toll Free (800) 448-2412 • www.KMSBearings.com

INSERT BEARINGS - Ball Bearing & Sleeve Type

Availability and Material Selection

General Information

KMS produces Insert type bearings to fit KMS' mounted blocks as well as to fit standard industrial blocks. KMS' selection covers all application requirements. For example:

For: Superior corrosion resistance, low speed and load, low torque, no lube applications.	Use: Plastic Raceway type - Insert ball bearing (AIB)
For: Benefits as above with higher load capability, higher torque, non-ball bearing type.	Use: Solid Plastic Sleeve type - SIB series
For: Higher load, non-magnetic, free spinning ball bearing type, corrosion resistance.	Use: 316 Stainless Raceway - SSIB series ball bearing
For: Heavy duty applications where grease can be used for corrosion protection. Additional protection can be obtained by using a KMS plastic mounted block.	Use: 52100 Steel Raceways - STLIB series

Availability

Some bearings listed on data sheets may not be in inventory. Some may require a minimum order, and delivery could range from 4 to 8 weeks. **Check with KMS for item availability and delivery.**

How to order/specify.

Call or fax KMS to check availability on a specific size and material.

Prefix: Standard & Special order materials

A = Acetal P = Polypropylene	K = Kynar®	PK = PEEK® SS = 316 Stainless	UH = UHMW - PE
---------------------------------	------------	----------------------------------	----------------

Suffix: Ball Type

-6 = 316 Stainless	-C = Ceramic	-T = Torlon®	-G = Glass
--------------------	--------------	--------------	------------

Example: PIB-1-6 = Polypropylene Raceways, IB = Insert bearing, -1 = 1" bore, -6 = 316 Stainless Balls.

Material Selection

The standard KMS Insert ball bearings are produced with Acetal raceways and cages and are fitted with 316 Stainless balls. Acetal, (tradename Celcon® or Delrin®) is a general purpose engineering polymer widely used for mechanical components and machinery needing to comply to FDA, NSF, and UL Standards. Our stainless inserts are made from 316 stainless that is widely used in the food and medical industries.

VARIATIONS & CUSTOM SIZES MADE EASILY FOR LOW AND HIGH QUANTITIES

Corrosion Resistant • Lube Free • Hygienic • Non-Metallic • Non-Magnetic • Light Weight • Design Flexibility

(continued on next page)



KMS Bearings, Inc. • 1560 Harmony Circle, Anaheim, CA 92807 • (714) 970-0280 • FAX (714) 970-0560
Toll Free (800) 448-2412 • www.KMSBearings.com

INSERT BEARINGS - Ball Bearing & Sleeve Type

Availability and Material Selection

When Acetal doesn't work.

When Acetal is not the ideal choice, KMS has alternate materials to suit most requirements.

For: Increasing chemical resistance.	Use: *Polypropylene, UHMW, *Kynar®
For: Higher heat capacity.	Use: *PEEK®, Vespel®, 316 Stainless
For: Greater strength with corrosion resistance.	Use: *Kynar®, Vespel®, 316 Stainless
For: Greater strength without corrosion resistance.	Use: 52100 Steel

*Special order materials - consult with KMS.

Material for races and balls.

	Acetal	Polypro	PEEK®	Kynar®	UHMW	Torlon®	SS316*	SS302*	Ceramic	Steel
Races	◇	◆	◆	◆	◇		◇			◆
Balls	◦					◦	•	◦	◦	
Solid Plastic	◆	◆			◇					

◇ = Available for Races or Solid Type ◦ = Special Order Balls *Stainless
 ◆ = Special Order • = Available Balls - Stock

No Rust + No Lube + Hygienic = Less Cost

Most bearing failures today are caused by corrosion. A KMS *plastic* or *316 stainless ball bearing* can be utilized in environments destructive to conventional bearings. They can operate in hostile environments such as sea water, film processing solutions, swimming pools, and in many cases the medium can be used as the cooling agent.

Special Bearings & Sizes - Variations - Engineering & Prototyping Plastic Ball Bearings "Ten Good Reasons To Use," ETC...

For additional information on the above topics see directory.

- Information presented is believed to be accurate at the time of publication but is subject to change without notice.

VARIATIONS & CUSTOM SIZES MADE EASILY FOR LOW AND HIGH QUANTITIES
 Corrosion Resistant • Lube Free • Hygienic • Non-Metallic • Non-Magnetic • Light Weight • Design Flexibility

